



Ozone Air Quality During the 2008 Beijing Olympics: Effectiveness of Emission Restrictions

Citation

Wang, Yuxuan, Jiming Hao, Michael B. McElroy, J. William Munger, Hong Ma, Dan Chen, and Chris P. Nielsen. 2009. Ozone air quality during the 2008 Beijing Olympics: Effectiveness of emission restrictions. *Atmospheric Chemistry and Physics* 9: 5237-5251.

Published Version

<http://www.atmos-chem-phys.net/9/5237/2009/>

Permanent link

<http://nrs.harvard.edu/urn-3:HUL.InstRepos:5029361>

Terms of Use

This article was downloaded from Harvard University's DASH repository, and is made available under the terms and conditions applicable to Open Access Policy Articles, as set forth at <http://nrs.harvard.edu/urn-3:HUL.InstRepos:dash.current.terms-of-use#OAP>

Share Your Story

The Harvard community has made this article openly available.
Please share how this access benefits you. [Submit a story](#).

[Accessibility](#)

1 **Ozone Air Quality during the 2008 Beijing Olympics: Effectiveness of Emission**
2 **Restrictions**

3
4 Yuxuan Wang^{1,2}, Jiming Hao¹, Michael B. McElroy², J. William Munger², Hong Ma¹,
5 Dan Chen¹, Chris P. Nielsen³

6
7 ¹Department of Environmental Science and Engineering and State Key Joint Laboratory of
8 Environment Simulation and Pollution, Tsinghua University, Beijing, China

9 ²Department of Earth and Planetary Sciences and School of Engineering and Applied
10 Sciences, Harvard University, Cambridge, Massachusetts, USA

11 ³Harvard China Project and School of Engineering and Applied Sciences. Harvard
12 University, Cambridge, Massachusetts, USA

13
14 **Abstract:**

15 A series of aggressive measures was launched by the Chinese government to reduce
16 pollutant emissions from Beijing and surrounding areas during the Olympic Games.
17 Observations at Miyun, a rural site 100 km downwind of the Beijing urban center, show
18 significant decreases in concentrations of O₃, CO, NO_y, and SO₂ during August 2008,
19 relative to August 2006-2007. The mean daytime mixing ratio of O₃ was lower by about
20 15 ppbv, reduced to 50 ppbv, in August 2008. The relative reductions in daytime SO₂, CO,
21 and NO_y were 61%, 25%, and 21%, respectively. Changes in SO₂ and in species
22 correlations from 2007 to 2008 indicate that emissions of SO₂, CO, and NO_x were
23 reduced at least by 60%, 32%, and 36%, respectively, during the Olympics. Analysis of
24 meteorological conditions and interpretation of observations using a chemical transport
25 model suggest that although the day-to-day variability in ozone is driven mostly by
26 meteorology, the reduction in emissions of ozone precursors associated with the Olympic
27 Games had a significant contribution to the observed decrease in O₃ during August 2008,
28 accounting for 80% of the O₃ reduction for the month as a whole and 45% during the
29 Olympics Period (8-24 August). The model predicts that emission restrictions such as
30 those implemented during the Olympics can affect O₃ far beyond the Beijing urban area,
31 resulting in reductions in boundary layer O₃ of 2-10 ppbv over a large region of the North
32 China Plain and Northeastern China.

33

1 **1. Introduction**

2 Ozone is produced in the troposphere by photochemical oxidation of carbon
3 monoxide (CO) and volatile organic carbon (VOCs), initiated by reaction with OH in the
4 presence of NO_x. In surface air, ozone has an adverse impact on both humans and
5 vegetation (NRC, 1991). Due to its relatively long lifetime, it can be transported over
6 long distances from source regions, making ozone pollution an issue of global concern.

7 China's rapid economic growth in recent years has resulted in large increases in
8 pollutant emissions (*Zhang et al., 2007; Ohara et al., 2007*) with important implications
9 for ozone on both regional and global scales. Beijing, China's capital, is one of the
10 world's largest metropolises with a population of over 15 million with a vehicle fleet of
11 more than 3 million. Beijing's air quality problems were characterized historically by
12 high concentrations of particulate matter and sulfur dioxide (*Hao and Wang, 2005*). In
13 recent years, due to a rapid increase in vehicular emissions, ozone pollution has drawn
14 increasing attention in Beijing (*Hao and Wang, 2005; Wang et al., 2006*), especially in the
15 period leading up to the Summer Olympic Games (August 2008)
16 (<http://www.nytimes.com/2007/12/29/world/asia/29china.html>). Formulating a successful
17 strategy to address O₃ pollution poses a difficult challenge as a consequence not only for
18 Beijing but also for other regions of the developed and developing world.

19 To improve air quality during the Olympics (8-24 August 2008) and the
20 Paralympics (9-17 September 2008), the Chinese government implemented a series of
21 aggressive measures to reduce pollutant emissions in Beijing and surrounding areas for
22 more than two months during the time periods of the Olympics and the Paralympics.
23 From 1 July to 20 September 2008, all vehicles that failed to meet the European No. I
24 standards for exhaust emissions (including light-duty and heavy-duty trucks and
25 inefficient personal vehicles) were banned from Beijing's roads. Mandatory restrictions
26 were implemented from 20 July to 20 September for personal vehicles, allowing them on
27 roads only on alternate days depending on license plate numbers (odd-numbered vehicles
28 on odd-numbered days and even-numbered vehicles on even-numbered days). As a result,
29 traffic flows in Beijing urban areas were found to have declined by 22% during the

1 Olympics (Y. Wu, personal communications). In addition to traffic emission controls,
2 other area and point sources in Beijing were placed under strict control during the same
3 period. Power plants in Beijing were required to reduce their emissions by 30% from
4 their levels in June when they had already met the Chinese emission standard. Several
5 heavily-polluting factories were ordered to reduce their operating capacities or to
6 completely shut down during the Games. All construction activities were placed on hold.
7 Since it has been shown that Beijing's air quality problems also have regional causes
8 (*Streets et al.*, 2007; *L. Wang et al.*, 2008), emission controls on large industrial sources
9 were also applied in surrounding provinces (e.g., Inner Mongolia, Shanxi, Hebei,
10 Shandong) and in the city of Tianjin. Traffic restrictions similar to Beijing's were
11 instituted in Tianjin during the Olympics Games.

12 As a result of these initiatives, one would expect to see significant decreases in
13 emissions of ozone precursors (CO, NO_x, and VOCs) and other key pollutants (SO₂ and
14 particulates, for example) in Beijing. *Wang et al.* [2007] and *Cheng et al.* [2008]
15 demonstrated that the four-day traffic restrictions in Beijing during the Sino-African
16 Summit in early November 2006 resulted in significant temporary reductions in
17 concentrations of NO_x and particulates in the city. Compared with the Sino-African
18 Summit, the emission reductions during the Olympic Games were more aggressive,
19 affecting more than the transportation sector and lasting much longer. The effect on
20 ozone is an important research question as the dependence of O₃ production on NO_x and
21 VOCs is significantly different between the so-called NO_x-limited regime and the
22 hydrocarbon-limited regimes (*Sillman et al.*, 1990). Many previous studies investigated
23 the nonlinear O₃ chemistry and challenges of combating O₃ pollution in cities of
24 developed countries (*Sillman et al.*, 1995; *Murphy et al.*, 2006, 2007; *Harley et al.*, 2005;
25 *Trainer et al.*, 2000). Compared with these studies, basic scientific understanding about
26 surface O₃ and precursor emissions in Chinese cities has been minimal. For example,
27 examining the day-of-week variations of O₃ provides a useful methodology to improve
28 understanding of nonlinear ozone chemistry for many western cities and downwind
29 regions (*Murphy et al.*, 2006, 2007). However, no such 'weekend' effect has been
30 observed for precursor emissions in China (*Beirle et al.*, 2003), likely due to different

1 emission patterns related to social-economic factors in China. This suggests that it is
2 essential to study in situ observations of important atmospheric species in China.

3 The present study will focus on the impact of the Olympics emission restrictions on
4 air quality, particularly on surface ozone in the summertime, through analysis of surface
5 observations at a rural site downwind of Beijing. Without a network of multiple
6 observational sites over different parts of Beijing urban area, this study employs
7 long-term, continuous measurements of O₃, CO, NO_y, and SO₂ at a suburban/rural site
8 (*Wang et al.*, 2008b) located directly downwind of the Beijing urban area during summer
9 months. Species correlations at the site will be used to infer ‘top-down’ constraints on the
10 magnitude of emission restrictions during the Olympics. The nested-grid version of the
11 GEOS-Chem global chemical transport model (*Wang et al.*, 2004a; *Chen et al.*, 2009)
12 will be employed to interpret the observations and to evaluate the reductions in emissions
13 during the Olympics.

14 The emission restrictions associated with the Olympic Games offer an invaluable
15 opportunity to test our understanding of the chemistry and dynamics affecting ozone and
16 its precursors in a major Chinese urban environment. The ability of chemical transport
17 models (CTMs) to reproduce changes in tropospheric ozone arising in response to these
18 emission changes provides an important test of these models.

19 We begin by introducing the Miyun site and the nested-grid GEOS-Chem model.
20 The paper is organized then in two parts. The first is devoted to observational results.
21 Trace gas concentrations and meteorological conditions measured at the Miyun site in
22 August 2008 are compared with observations for Augusts of the two preceding years,
23 demonstrating significant decreases in O₃, CO, NO_y, and SO₂ during August 2008. We
24 show that the reduction in pollution levels during the Olympics, far exceeding the
25 magnitude attributed to year-to-year changes in meteorology, reflects most a response to
26 the emission reductions. Using species concentrations and their correlations observed at
27 Miyun, quantitative estimates are derived for the magnitude of emission reductions for
28 SO₂, CO, and NO_x during the Olympics employing a ‘top-down’ approach independent of
29 any modeling or bottom-up information. The latter part of the paper focuses on a
30 model-based analysis. The extent to which the ‘top-down’ estimates of emission

1 reductions improves the performance of the model in simulating the observations at
2 Miyun provides an independent evaluation of the observational analysis conducted in the
3 first part of the paper. Model sensitivity analysis is used to differentiate quantitatively
4 between meteorology- and emission-driven changes in ozone during the Olympics. The
5 impact of the emission reductions of O₃ at a regional scale is also predicted by the model.
6 Concluding remarks are presented in Section 5.

8 **2. Observations and Model**

9 **2.1 Surface Observations**

10 The Miyun site (40° 29'N, 116° 46.45' E) is located at an elevation of about 152 m
11 in Miyun County (population of about 420,000), about 100km northeast of the Beijing
12 urban area. The terrain to the south of the site falls off gradually to about 90 m in a region
13 characterized by a mix of agriculture and small villages. Mountains rise steeply to the
14 north. There are no big point sources between the Beijing urban area and the site, nor
15 close to the site in other directions. A map of the Beijing-Miyun region was shown in
16 Figure 1 of *Wang et al.* (2008b) and is not reproduced here. The station was established
17 through a collaboration between the Harvard China Project and Tsinghua University. The
18 measurements began in November 2004 and include continuous observations of O₃, CO,
19 CO₂, together with basic meteorological data (temperature, relative humidity, and wind
20 speed and direction). Additional instruments measuring NO, NO_y, and SO₂ were added in
21 2006, with data collection for these species initiated in early 2007. The present study
22 focuses on measurements of O₃, CO, NO_y, and SO₂ for July, August, and September (JAS)
23 2008 when the emission restrictions were in place. Mixing ratios of these species
24 measured for the same period in 2006 and 2007 are used for comparison. Measurements
25 in summer 2005 had many gaps due to instrumental problems and are not included for
26 comparison. Figure 1 shows afternoon wind directions recorded at the Miyun site in
27 August 2006-2008. The prevailing SSW-SW-S winds suggest that the Miyun site is
28 located directly downwind of the Beijing urban area in summer. Miyun observations are
29 representative therefore of plume conditions of Beijing urban pollution in summer.

1 The O₃ and CO instruments and the site details are discussed in *Wang et al.* (2008b).
2 The NO_y and SO₂ instruments are outlined here. The NO_y mixing ratio is measured by the
3 chemiluminescence method (Thermo Environmental Instruments 42C-Y). Sample air is
4 drawn first into an inlet 6 m above the ground and then split into two parallel channels.
5 The NO_y channel uses a heated molybdenum converter to reduce all forms of NO_y to NO.
6 The catalyst is preceded by as short a section of Teflon tubing as practical to minimize
7 loss of HNO₃ and other surface active compounds on tubing walls before they reach the
8 catalyst. The instrument response and catalyst efficiency are calibrated every 6 hours by
9 introducing NIST traceable standard NO and n-propyl nitrate into the sample air in
10 sequence. The SO₂ mixing ratio is measured by a pulsed fluorescence method (Thermo
11 Environmental Instrument 43CTL). Sample air is drawn from the same inlet as CO and
12 O₃, and a mass flow controller upstream of the instrument maintains constant flow in the
13 system. The instrument zero is determined every 2 hours by passing sample air into a
14 denuder coated with sodium carbonate. A calibration sequence is implemented every 6
15 hours by introducing NIST traceable SO₂ standard into sample air. The mixing ratio is
16 computed by subtracting the zero offset from ambient signal voltage and multiplying by
17 the instrument gain.

19 **2.2 Model description**

20 The nested-grid GEOS-Chem model developed by *Chen et al.* (2009) is employed
21 in the present study. The GEOS-Chem global 3-D model for tropospheric chemistry is
22 driven by meteorological data assimilated by the Goddard Earth Observing System
23 (GEOS) at the NASA Global Modeling and Assimilation Office (GMAO). The present
24 study uses GEOS-5 meteorology covering the period from Dec 2004 to present. The
25 meteorological data include 3-D fields updated every 3 hours for surface fluxes and
26 mixing depths and every 6 hours for other variables. The horizontal resolution is 0.5°
27 latitude by 0.667° longitude, with 72 levels in the vertical extending from the surface to
28 0.01 hPa. The lowest 2 km is resolved into 14 layers with midpoints at altitudes of 70,
29 200, 330, 460, 600, 740, 875, 1015, 1157, 1301, 1447, 1594, 1770, 2000 m for a column
30 based at sea level. For inputs to the global GEOS-Chem model, the horizontal resolution

1 of the meteorological fields is degraded to 2° latitude x 2.5° longitude or 4° latitude x 2.5°
2 longitude due to computational limitations. Details of the degrading process are provided
3 by *Wang et al.* (2004a).

4 The structure of the nested-grid GEOS-Chem model involves a window with a
5 uniform horizontal resolution of 0.5° x 0.667° embedded in a low-resolution (4° x 5°)
6 global background. The nested-grid GEOS-Chem retains the generic high horizontal
7 resolution of the GEOS-5 data over the nested regional domain. For the present study, the
8 nested domain is set at 70°E-150°E and 11°S-55°N and includes all of China, its
9 neighboring countries, and a significant portion of the northwestern Pacific (*Wang et al.*,
10 2004a; *Wang et al.*, 2004b; *Chen et al.*, 2009). The high-resolution regional simulation is
11 coupled dynamically to the low-resolution global model through lateral boundary
12 conditions that are updated every three hours.

13 The GEOS-Chem model includes a detailed tropospheric O₃-NO_x-hydrocarbon-
14 aerosol simulation. The aerosol and oxidant chemistry are coupled through the formation
15 of sulfate and nitrate, heterogeneous chemistry, and aerosol effects on photolysis rates.
16 Photolysis frequencies are computed using the Fast-J radiative transfer algorithm (*Wild et al.*
17 *et al.*, 2000) which allows for Rayleigh scattering as well as for Mie scattering by clouds
18 and aerosols. Simulation of wet and dry deposition follows the schemes developed by
19 *Bey et al.* (2001). Application and evaluation of the model over China have been
20 described by *Wang et al.* (2004a; 2004c). Anthropogenic emissions of NO_x, CO, SO₂, and
21 VOCs over the nested East Asia domain were taken from *Zhang et al.* (2009) for the year
22 2006. Since our analysis focuses on the differences in model results over Beijing between
23 2007 and 2008, 2007 is chosen as the base year with which to represent emissions from
24 Beijing. Anthropogenic emissions for Beijing in 2007 are taken from detailed inventory
25 work carried out by researchers at Tsinghua University. The inventory for Beijing was
26 developed bottom-up and has a spatial resolution of 4 km x 4 km. It was compiled from
27 detailed energy statistics for Beijing, road network databases, locations of power plants
28 and large industrial facilities, population distribution, and surveys of other key
29 parameters related to activity rates. Emission factors for pollutants were obtained from a
30 detailed technology-based approach reflecting rapid renewal of combustion equipment

1 and processes, combined with field measurements of representative combustion types
2 (S.X. Wang et al., Emission reductions and air quality improvements of air quality control
3 measures during the 2008 Olympics in Beijing, *Environ. Sci. Tech.*, submitted, 2009).

5 **3. Air quality improvement during the Olympics**

6 As summarized in the introduction, some emission-reduction measures started
7 later than others, although all were in place during the time period of the Olympics (8 –
8 24 August, 2008). Therefore, in order to evaluate the aggregate effects of the
9 emission-reduction policies, most of the analysis below will focus on pollutant
10 concentrations for August 2008. We showed in a previous study that O₃ peaks in June at
11 Miyun and that mean daytime O₃ in August is on average 10 ppbv lower than that in June
12 (*Wang et al.*, 2008). Other observations for Beijing have shown similar seasonal patterns
13 in surface O₃ (*Ding et al.*, 2007; *Lin et al.*, 2008). To minimize the compounding effects
14 of this natural seasonal variability of O₃ and other species, our analysis compares trace
15 gas levels in August 2008 to the same periods in 2006 and 2007, rather than comparing
16 August to June or other months of 2008. No ‘weekend effect’ has been observed for
17 precursor emissions in China (*Beirle et al.*, 2003) and we did not find a ‘weekend effect’
18 on O₃ observed at Miyun. Therefore, we did not distinguish weekend from weekday
19 observations in the following discussion.

21 **3.1 Trace gas concentrations**

22 Figure 2 presents mean daytime mixing ratios of O₃ (2a) and CO (2b) as observed
23 at Miyun in summer (July-August-September; JAS) 2006-2008. In JAS 2008, mean
24 daytime mixing ratios of CO and O₃ dropped significantly compared to the same months
25 in 2006 and 2007. The mean daytime mixing ratio of CO was 350 ppbv in August 2008,
26 about 150 ppbv (or 30%) lower than for August in 2006 and 2007. The mean daytime
27 mixing ratio of O₃ decreased by about 15 ppbv between Aug 2006-2007 and Aug 2008,
28 from 65 ppbv to 50 ppbv. During the Olympics (4 August – 24 August 2008), daytime O₃
29 averaged 42 ppbv. The decreases in O₃ and CO, compared to the same months in

1 2006-2007, are larger than the magnitude of interannual variations observed at Miyun.

2 Figure 2c presents hourly mixing ratios of O₃ observed at Miyun in August
3 2006-2008. It is clear that O₃ was lowest in 2008 for almost every day in August except
4 the few days at the beginning of the month, which were attributed to unfavorable
5 meteorological conditions (to be discussed in Section 4.2). The decreases in August 2008
6 were most significant in the afternoon when photochemical production of O₃ is most
7 active and urban pollution plumes are transported to the site. Mixing ratios of CO peak in
8 the afternoon in summer, similar to O₃, indicating the arrival of urban pollution plumes
9 (Wang *et al.*, 2008). The decrease in afternoon mixing ratios of O₃ in August 2008
10 indicates reductions in chemical production of O₃ in urban pollution plumes. The
11 reduction in O₃ was not only reflected in mean concentrations but also in peak
12 concentrations. The number of hours with 1-hr average concentrations of O₃ exceeding
13 102 ppbv (Chinese air quality standard for ozone) decreased from an average of 25 hours
14 in August 2006 and 2007 to only 3 hours in August 2008.

15 Figure 3 displays afternoon mixing ratios of O₃, CO, NO_y, and SO₂ observed at
16 Miyun in August 2006-2008 as a function of wind direction. For NO_y and SO₂, data are
17 available only for 2007-2008. Lower mixing ratios of all the species were observed for
18 most wind directions in August 2008. The largest reductions in trace gas concentrations
19 were observed for air masses arriving from SW, SSW and S, i.e. from the Beijing urban
20 area. Table 1 compares mean afternoon mixing ratios of the trace gases associated with
21 SSW-SW-S winds observed at Miyun between August 2007 and 2008. For these air
22 masses, the relative reductions in mixing ratios of SO₂, CO, NO_y, and O₃ from August
23 2007 to August 2008 are 61%, 25%, 21%, and 26%, respectively.

24

25 **3.2 Meteorological conditions**

26 Production and transformation of O₃ depend critically on meteorology and weather
27 patterns. In this section we compare the meteorological parameters measured at Miyun
28 for Augusts of the three years investigated in this study. As illustrated in Figure 1, the
29 prevailing winds were from SSW and SW in August 2007 and 2008 and from S and SSE
30 in August 2006. However, mixing ratios of O₃ and CO associated with S and SSE winds

1 in August 2006 were comparable to those associated with SW and SSW winds (c.f.
2 Figure 3a and 3b), with both representing polluted air masses from urban areas to the
3 south of the site. Therefore, we conclude that there were no significant changes in the
4 characteristics of air masses associated with the prevailing winds arriving at the site over
5 Augusts of the three years.

6 Temperature and relative humidity (RH) are two key meteorological parameters
7 measured at the site. Temperature controls key chemical reactions. RH is an indicator of
8 water vapor content in the air with respect to saturation levels. It is closely associated
9 with weather patterns. RH is typically higher on cloudy and precipitation days than on
10 sunny conditions. As cloudiness and precipitation are unfavorable for photochemical
11 production of ozone at the surface, RH tends to be negatively correlated with O₃ (Davis
12 et al., 1999; Elminir, 2005). Our prior study (Wang et al., 2008b) discussed the negative
13 correlation between RH as an indicator of cloudiness and O₃ in summer 2006 at the
14 Miyun site.

15 Although wind direction measured locally at the site is not equal to the direction
16 from which air masses originate, grouping observations for the whole month by wind
17 direction can still give some statistical association with the origins of air masses. Figure 4
18 presents temperature and RH observed at Miyun in August 2006-2008 as a function of
19 wind direction. Northeasterly winds (NNE, NE, ENE) were sampled 10% of the time in
20 August 2008, more frequently than in either August 2006 or 2007 (2% and 4% of the
21 time, respectively) (Figure 1). As shown in Figure 3, the mean mixing ratio of O₃ in
22 NNE-NE-ENE air masses dropped from 50 ppbv in August 2006-2007 to 35 ppbv in
23 August 2008, with relatively smaller or no changes for CO, NO_y, and SO₂, suggesting
24 that the reductions in O₃ may be attributed to differences in meteorological factors such
25 as temperature and relative humidity (RH) rather than in precursor emissions. For air
26 masses from the NNE-NE-ENE directions, the mean temperature was 4° C lower in
27 August 2008 as compared to August 2006-2007, while RH was higher by 15% (Figure 4).
28 Since lower temperature and higher RH are normally considered meteorological
29 conditions that are not conducive to photochemical production of O₃, this meteorological
30 difference could account for reduced O₃ levels in NNE-NE-ENE air masses sampled in

1 August 2008 relative to those in 2006 and 2007. However, winds from the NNE-NE-ENE
2 sector are infrequent at the site in August, and lower O₃ mixing ratio for this sector relates
3 to short-term, day-to-day, variability in meteorology and thus can only account for 2 ppbv
4 of the reduction in monthly mean O₃ for August 2008. The effect on other species is even
5 smaller. Therefore, the large decreases observed for O₃ and other species in August 2008
6 (e.g., a 15 ppbv reduction in O₃) would have to be related to the majority of air masses
7 from SSW-SW-S-SE directions, where significant reductions in emissions took place in
8 the Beijing urban area during the Olympics.

9 For SSW-SW-S-SE air masses, mean temperature and RH in August 2008 were not
10 significantly different during Augusts of 2006 and 2007. For these air masses, mean
11 temperature was 27° C in August 2008, as compared to 26° C and 29° C in August 2006
12 and 2007, respectively. Average RH's in August 2006, 2007, and 2008 were 70%, 50%,
13 and 60%, respectively. The difference in the mean mixing ratios of O₃ between August
14 2006 and 2007 is -4 ppbv, corresponding to a difference of -3° C in mean temperature and
15 +20% in RH. By comparison, the difference in mean O₃ between August 2008 and 2007
16 is -15 ppbv, despite only a -1° C difference in mean temperature and a +10% difference in
17 RH. This suggests that inter-annual variations in temperature and RH could not be the
18 only explanation for the unusually low concentrations of O₃ and other species observed at
19 Miyun in August 2008.

20 Figure 5 presents ozone observations in August 2006-2008 as a function of other
21 meteorological variables (temperature, RH, and wind speed). Each of the meteorological
22 variables has similar ranges for Augusts of the three years, except for the lack of high
23 wind speed sector (> 4 m/s) in August 2008 (to be discussed below). For each of the
24 sectors of temperature, RH, and wind speed shown in Figure 5, mean O₃ levels of
25 Augusts 2006 and 2007 were always higher compared with August 2008. The differences
26 tend to be larger at higher temperature and lower RH, which are typically favorable
27 meteorological conditions for ozone pollution. This suggests that meteorology cannot be
28 the only factor contributing to the reductions in O₃ in August 2008.

29 Mean daytime wind speed was 1.3 m/s in August 2008, slightly lower than that of
30 1.7 m/s in August 2006 and 2007. For SSW-SW-S-SE winds, mean speed in the afternoon

1 was 1.6 m/s in August 2008 as compared to 2.3 m/s in August 2007. If slower
2 southwesterly winds could be interpreted as indicating slower and less efficient transport
3 of pollution from the Beijing urban region, this in combination with reductions in urban
4 pollutions during the Olympics offers a plausible explanation for lower concentrations of
5 O₃ and other pollutants observed at Miyun in August 2008.

6 We showed in a previous study that optically thick clouds associated with summer
7 monsoonal rainfall have a significant radiative impact on O₃ at Miyun (Wang *et al.*, 2008).
8 Cloud optical depth (COD) retrieved from the Moderate Resolution Imaging
9 Spectroradiometer (MODIS) instrument aboard the Aqua satellite (Platnick *et al.*, 2003;
10 MYD08_M3, MODIS level-3 monthly global product at 1°x1° resolution) showed
11 slightly lower COD for August 2008 (COD=17.7), as compared to August 2007
12 (COD=22.6). Therefore, interannual variations in precipitation and COD were ruled out
13 as the key factors responsible for lowering O₃ as observed in August 2008.

14

15 **3.3 Species correlations and ‘top-down’ estimates of emission reductions**

16 In this section, we employ an observation-based approach to derive quantitative
17 estimates on the magnitude of emission reductions for SO₂, CO, and NO_x during the
18 Olympics. First, the relative reduction in emissions of SO₂ is estimated from observations.
19 SO₂ has shorter lifetime than NO_y and is thus less influenced by background
20 concentrations. The reductions in emissions of CO and NO_x, relative to SO₂, are inferred
21 subsequently using the dCO/dSO₂ and dNO_y/dSO₂ correlation slopes observed at Miyun.

22 Due to the relatively short lifetime of SO₂ (a few hours in summer considering both
23 gas phase and aqueous phase reactions), background SO₂ concentrations at Miyun are
24 lower than concentrations of CO and NO_y. As illustrated in Figure 3, for the relatively
25 clean air masses from the northeast sampled at Miyun, mean mixing ratios of SO₂, NO_y,
26 and CO are about 0.5 ppbv, 5 ppbv, and 200 ppbv, respectively. Given the negligible
27 background level for SO₂, the difference in mixing ratio from the urban pollution plumes
28 between August 2007 and 2008 can be assumed to be caused by changes in emissions and
29 variations in the chemical lifetime of SO₂. One can expect that the chemical lifetime of
30 SO₂ and its transport time from the Beijing urban area to the site depend on

1 meteorological conditions. To separate the effects of meteorology on the lifetime of SO₂,
2 the S-SW-SSW air masses sampled at Miyun during August 2007 and 2008 were divided
3 into several data intervals according to their temperature, RH, and wind speed. Under the
4 constraint that each interval contain at least five observational data points for each month
5 to allow for statistical representation, we identified 6 intervals by temperature, 6 by RH,
6 and 4 by wind speed, as illustrated in Figure 6a, 6b, and 6c, respectively. Mean mixing
7 ratios of SO₂ were calculated for each interval as well as the ratio in SO₂ between August
8 2007 and 2008 ($[\text{SO}_2]_{2008}/[\text{SO}_2]_{2007}$). The mean ratio averaged for all the intervals is
9 assumed to indicate reductions in emissions, while the variance about the mean
10 represents random variations in the chemical lifetime and transport time of SO₂ at Miyun.
11 We found that the mean ratio in SO₂ (weighted by the frequency of the meteorology
12 classes in Figure 6) was 40% and the variance in SO₂ lifetime was 10%, representing the
13 uncertainty in our estimate of emission reductions. We estimated therefore that during the
14 Olympics period (i.e. August 2008), SO₂ emissions in Beijing were reduced by 60%
15 ($\pm 10\%$ uncertainty) compared with the same month the year earlier.

16 We caution that this approach does not take into account the affect of changing
17 oxidant levels (i.e., OH, O₃, and H₂O₂) during the Olympics on the chemical lifetime of
18 SO₂. Given the 25% reduction in O₃ levels during the Olympics, the lifetime of SO₂
19 against the aqueous phase oxidation may be reduced accordingly, resulting in less loss of
20 SO₂ over the course of transport from the urban area to the site. The same argument holds
21 for the gas phase oxidation of SO₂, considering the affect of reducing NO_x and O₃ on OH.
22 Therefore, our estimate of 60% reduction in SO₂ emissions derived above is a
23 conservative estimate. Our later modeling analysis (Section 4.1) indicates that use of the
24 Olympics emissions for all the species in the model results in an average of 42%
25 reduction in simulated SO₂ concentrations at Miyun, less than a perfect linear response to
26 the 60% reduction in SO₂ emissions. A robust estimate of the SO₂ emission reductions
27 would require an inverse modeling approach. As the focus of the present study is to
28 demonstrate the effectiveness of emission reductions during the Olympics on air quality
29 improvement, use of the conservative emission estimates would not weaken our
30 conclusions.

1 Figure 7 shows scatterplots of NO_y versus CO (7a), SO_2 versus CO (7b), and SO_2
2 versus NO_y (7c) observed at Miyun during August 2007 and 2008. As we are interested
3 primarily in pollution from the Beijing urban area, the figure presents only data for the
4 SSW-SW-S air masses sampled at Miyun. Linear regressions for the observations are
5 obtained with the reduced major axis (RMA) method that allows for uncertainty in both
6 variables (*Hirsch and Gilroy, 1984*). The three species are positively correlated at Miyun,
7 suggesting that they originate from co-located sources. The enhancement ratios between
8 two species (e.g., $d\text{CO}/d\text{SO}_2$), derived from the slope of the regression line, provide
9 useful constraints on their emission ratios. Since the Miyun site is somewhat removed
10 from fresh urban emissions, the enhancement ratios measured at the site will be affected
11 also by differences in lifetimes between the species. In the following analysis, focusing
12 on relative instead of absolute changes in enhancement ratios between August 2007 and
13 2008, we shall assume that the lifetime ratio between the species does not change
14 significantly between the two periods, given that meteorological variability influences the
15 lifetime of all the species.

16 The $d\text{CO}/d\text{NO}_y$ enhancement ratio at Miyun is 37.5 mol/mol in August 2008,
17 similar to the value of 36.5 mol/mol observed in August 2007, indicating that the
18 fractional reduction of emissions was similar for CO and NO_x in August 2008. In contrast,
19 the $d\text{CO}/d\text{SO}_2$ and $d\text{NO}_y/d\text{SO}_2$ enhancement ratios in August 2008 are significantly
20 larger than values observed in August 2007. This suggests that the fractional reduction of
21 SO_2 emissions in August 2008 is much greater than that for CO or NO_x , resulting in the
22 observed increases in the enhancement ratio of CO/SO_2 and NO_y/SO_2 .

23 The relative reduction in CO and NO_x emissions can be inferred using the
24 $d\text{CO}/d\text{SO}_2$ and $d\text{NO}_y/d\text{SO}_2$ enhancement ratios observed at Miyun. As shown in Figure 7,
25 $d\text{CO}/d\text{SO}_2$ increased from 54.7 (± 3.1) mol/mol in August 2007 to 93.2 (± 7.5) mol/mol in
26 August 2008. Given a 60% reduction in SO_2 emissions derived above, this suggests a
27 32% ($\pm 14\%$ uncertainty) reduction in CO emissions during the Olympics. Similarly,
28 $d\text{NO}_y/d\text{SO}_2$ increased from 1.7 (± 0.1) mol/mol in August 2007 to 2.7 (± 0.2) mol/mol in
29 August 2008, suggesting a 36% ($\pm 14\%$) reduction in NO_x emissions. The relative
30 emission reductions derived here using atmospheric measurements can be regarded as

1 'top-down' in contrast to the 'bottom-up' method based on analyzing changes in energy
2 consumption or emission factors. Our 'top-down' estimate suggests that in August 2008,
3 total emissions of SO₂, CO, and NO_x in Beijing were reduced by 60%, 32%, and 36%,
4 respectively, compared to the same month the year before.

5 Our results suggest that the emission control on SO₂ was most effective during the
6 Olympics. Emissions of SO₂ originate largely from coal-burning point sources such as
7 power plants and industrial boilers, while sources of CO and NO_x are more diversified.
8 Transportation accounts for a large fraction of emissions for both CO and NO_x, while the
9 power sector is a greater contributor to both SO₂ and NO_x. The flue gas desulphurization
10 (FGD) equipment installed on power plants in Beijing and mandated to operate at full
11 capacity since Jun 2008 (Wang et al., submitted manuscript) can remove over 95% of
12 SO₂ from smoke stacks, whereas NO_x-control technologies with the same effectiveness
13 such as SCR (Selective Catalytic Reduction) are not widely installed because of high cost
14 involved. The low-NO_x burner technology adopted in current Chinese power plants can
15 reduce NO_x emissions only by 30% at most (Zhao et al., 2009). Control measures
16 targeted at the power sector would therefore be more effective in reducing SO₂ relative to
17 NO_x, resulting in increases in the NO_x/SO₂ ratio. The traffic restriction during the
18 Olympics would decrease the CO/NO_x ratio because of the strict ban placed on old,
19 inefficient vehicles that failed to meet the European No. I standards for exhaust emissions.
20 However, control on power plant emissions would increase the CO/NO_x ratio as power
21 plants are minor sources for CO. As a result, dCO/dNO_y enhancement ratio observed at
22 Miyun did not change significantly from August 2007 to 2008, leading to comparable
23 estimates on emission changes for CO and NO_x.

24 Researchers at Tsinghua University conducted a detailed bottom-up study of Beijing
25 emissions during the Olympics period based on roadside traffic monitoring, emission
26 measurements at the smoke stacks of selected power plants, statistics on industrial output
27 reductions and plant closures, and other information on activity levels and emission
28 factors (Wang et al., submitted manuscript). Their estimated emission reductions were
29 58%, 51%, and 55% for SO₂, CO, and NO_x. Our estimate of the reductions is consistent
30 with the bottom-up estimate for SO₂ but is lower for NO_x and CO. On one hand, the

1 difference is consistent with our above analysis that our top-down estimates are subject to
2 low biases. On the other hand, the discrepancy may be attributed to certain types of
3 emissions not included in the bottom-up study, such as biofuel combustion in rural areas
4 surrounding Beijing, biological emissions of NO_x from soils, and CO produced from
5 decomposition of VOCs. These types of emissions, which are important sources for CO
6 and NO_x but not for SO_2 , are unlikely to have been impacted by measures taken to reduce
7 emissions of pollutants during the Olympics. Allowing for their contributions in the
8 bottom-up study, the estimated emission reductions for CO and NO_x would have been
9 lower. Our ‘top-down’ estimates are based on observational data, accounting for the
10 composite impact of all the emission sources.

11 The bottom-up study estimated that VOCs emissions in Beijing were reduced by
12 59% during the Olympics compared with August 2007. As VOCs species were not
13 measured at Miyun, we adopted the bottom-up estimate in the model simulation
14 discussed below. The top-down estimates of SO_2 , CO, and NO_x emissions (i.e., reduction
15 of 60%, 32%, and 36% relative to Aug 2007) and bottom-up estimates of VOCs
16 emissions (i.e., reduction of 59%) combined here are referred to as the Olympics
17 emissions over Beijing in what follows. Emission reductions for other regions during the
18 Olympics were taken from bottom-up estimates by researchers at Peking University (*S.Q.*
19 *Zhang*, personal communications).

20

21 **4. Model Analysis**

22 In this section, we first evaluate the performance of the nested-grid GEOS-Chem in
23 simulating the changes in O_3 and other species observed at Miyun during the Olympics.
24 The model will evaluate the top-down emissions and simulate the impact of emission
25 reductions on the regional atmosphere.

26

27 **4.1 Model evaluation of emissions**

28 Figure 8 presents day to day variations of afternoon mean mixing ratios of O_3 , CO,
29 NO_y , and SO_2 at Miyun in August 2008. Observations are indicated by the red lines.

1 Significant day-to-day variations were observed for all species at Miyun, with higher
2 pollution levels during the first five days of August. Since all emission reduction
3 measures had been put in place before 1 August 2008, emissions were expected to stay
4 relatively constant throughout August except on the opening day of the Olympic Games
5 (8 August), which was declared a public holiday for Beijing. Emissions from the
6 transportation and industry sectors were likely lower on that day. Observations at Miyun
7 indicate that mixing ratios of O₃, CO, NO_y, and SO₂ were lower apparently on 8 August
8 compared with the day before, although the impact is expected to have lasted for at most
9 a couple days. Day-to-day variability in mixing ratios at Miyun presumably reflects
10 changes due to variations in meteorological conditions and chemical lifetimes of relevant
11 chemical species.

12 In Figure 8, model results computed using the standard emissions for 2007 are
13 displayed in black while those using assumed Olympics emissions are displayed in blue.
14 With the standard 2007 emissions, the model captures well the temporal variability of all
15 four species observed at Miyun, with correlation coefficients (*r*) ranging from 0.56 to 0.8.
16 This suggests that the day-to-day variations in individual species are driven primarily by
17 changes in meteorology and chemistry, features that are accurately reproduced by the
18 model. However, absolute values of model results obtained using the standard emissions
19 are significantly higher than observational results for all the species, confirming the
20 benefit to air quality of the emission restrictions implemented during the Olympics. The
21 biases between model and observation average are +25 ppbv (+41%) for O₃, +70 ppbv
22 (+21%) for CO, 3.5 ppbv (+37%) for NO_y, and 2.7 ppbv (+113%) for SO₂.

23 Adopting the Olympics emissions in the model results in a significant decrease in
24 the mixing ratios of O₃, CO, NO_y, and SO₂ simulated for Miyun (Figure 8), thus reducing
25 the model bias by more than a factor of two for all species. After implementing the
26 Olympics emission reductions, mean mixing ratios simulated by the model are reduced
27 by 15% (or 12 ppb) for O₃, 24% (96 ppb) for CO, 36% (4.8 ppb) for NO_y, and 42% (2.1
28 ppb) for SO₂, compared with those based on the standard emissions, with no significant
29 biases between model and observation for CO, NO_y, and SO₂. The ability of the model to
30 simulate day-to-day variations in observations is also improved by adopting the Olympics

1 emissions. The correlation coefficients between model and observation for O₃, NO_y, and
2 SO₂ increase to 0.86, 0.75, and 0.65 from their corresponding values of 0.81, 0.56, and
3 0.54 in the standard simulation. We conclude therefore that the use of the Olympics
4 emissions significantly improves the performance of the model in simulating the
5 observations at Miyun.

6 Model sensitivity analysis was conducted to evaluate the relative contribution to air
7 quality improvements in Beijing during the Olympics of local versus regional emission
8 restrictions. We found that 80% of the concentration decreases simulated at Miyun during
9 the Olympics resulted from a reduction in emissions from Beijing, with regional emission
10 reductions accounting for an additional 20% decrease.

11

12 **4.2 Influences of meteorology and emissions**

13 Since the model has been demonstrated to reproduce well the variability in
14 meteorology and chemistry, model sensitivity analysis was conducted to quantify the
15 extent to which meteorological conditions were responsible for the improvement in ozone
16 air quality in Beijing during the Olympics. The model was spun up for three months from
17 1 March 2006, and results for 1 June 2006 were saved to provide the initial conditions for
18 subsequent simulations. The model was run from June to August for each of the three
19 years (2006-2008), all using the same initial conditions obtained from the spin-up for 1
20 June 2006 and using the standard emissions for 2007. The Olympics emissions described
21 above were then adopted to drive the model simulation for August 2008 only. Hourly
22 model outputs for the Augusts of the three years were used for analysis.

23 We define the daily O₃ anomaly in August 2008 as the deviation of afternoon-mean
24 O₃ from its mean values in 2006 and 2007. The daily O₃ anomaly calculated from the
25 model using the same standard emissions for August 2006-2008 can be thought of as
26 representing the change in O₃ during the Olympics that is not related to emission
27 restrictions, and we refer to it as the meteorology-driven anomaly. The O₃ anomaly
28 derived from model results using the Olympics emissions for August 2008 is called the
29 composite anomaly as the model in this case takes into account both meteorology and
30 emissions specific to August 2008. The difference between the composite anomaly and

1 the meteorology-driven anomaly is regarded to be the emission-driven anomaly. Figure
2 9a compares the observed daily O₃ anomaly at Miyun (solid line) with the composite
3 anomaly simulated by the model (dashed line). The daily anomaly in both model and
4 observation ranges from -60 ppb to 40 ppb. Positive anomalies were observed to occur
5 frequently before 8 August, after which, negative anomalies prevailed. The model was
6 found to reproduce well the daily O₃ anomaly observed at Miyun in August 2008: the
7 correlation coefficient between model and observation is 0.83. The mean O₃ anomaly
8 simulated by the model is -11.2 ppb, consistent with the mean of -12.7 ppb reflected in
9 the observational data. With the model reproducing well the observed anomaly, we
10 assume that the model can do a satisfactory job in distinguishing the meteorology-driven
11 anomaly from the emission-driven anomaly, which cannot be separated in observational
12 data.

13 Figure 9b presents the meteorology-driven anomaly (solid line) and the
14 emission-driven anomaly (dashed line) predicted by the model. The meteorology-related
15 anomaly has significant day-to-day variations, ranging from -40 ppb to +40 ppb. In
16 contrast, the emission-driven anomaly is always negative, ranging from -20 ppb to -5 ppb,
17 confirming the benefit of emission restrictions in reducing O₃ pollution over Beijing
18 regardless of meteorological conditions. Compared with the meteorology-driven anomaly,
19 the variability in the emission-driven anomaly is much smaller. The good temporal
20 correlation between the meteorology-related and the composite anomaly indicates that the
21 anomaly on individual days is mostly driven by meteorology. Table 2 summarizes mean
22 anomalies for different days in August 2008. The large positive meteorology anomaly
23 during the first week of August (+25 ppb) indicates that high O₃ levels during this period
24 were largely meteorology driven, when the atmosphere was stagnant with weak
25 southwesterly winds and high temperature. Although the emission-driven anomaly (-11
26 ppb) cannot fully compensate for the meteorology-driven anomaly during this period, it
27 reduces the composite anomaly (+14 ppb) to 60% of the meteorology anomaly,
28 suggesting the benefit of reducing emissions of O₃ precursors during polluted days.
29 During the Olympics (8 August – 24 August), both the meteorology-driven and
30 emission-driven anomalies are negative, averaging -12 ppb and -10 ppb respectively. The

1 meteorology-driven anomaly appears to account for a slightly larger fraction (55%) of the
2 composite anomaly than the emission-driven anomaly (45%) during this period. However,
3 the difference between the two anomalies is only 2 ppb, within typical error bounds of
4 chemical transport models for O₃ simulation. Averaged for the whole of August 2008,
5 however, the mean emission-driven anomaly is -8.9 ppb, accounting for 80% of the
6 composite anomaly and larger than the meteorology-driven anomaly (-2.3 ppb) by a
7 factor of 4. We conclude that although the day-to-day variability in ozone is driven
8 mostly by meteorology, the reduction in emissions of ozone precursors associated with
9 the Olympic Games is responsible for at least half of the observed decrease in O₃ during
10 August 2008.

11

12 **4.3 Regional impact of emission reductions**

13 Figure 10a shows monthly mean afternoon O₃ averaged over the planetary
14 boundary layer (PBL; 0-2 km) simulated by the GEOS-Chem model using the standard
15 emissions for August 2008. The model predicts that high ozone levels exceeding 70 ppbv
16 are located over the North China Plain (32°-40°N, 110°-120°E). Ozone mixing ratios are
17 relatively low in south China and northeastern China. Use of the Olympics emissions in
18 the model decreases the simulated O₃ mixing ratios over the Beijing urban area and the
19 surrounding regions. Previous studies showed that the Beijing urban area was in a
20 VOC-limited regime (*Chou et al.*, 2009), while the surrounding suburban and rural areas
21 were NO_x-limited (*Wang et al.*, 2006). As the spatial resolution of the model is not
22 sufficient to simulate the nonlinear dependence of ozone production on NO_x at the urban
23 scale, the simulated reduction in ozone over the Beijing urban area during the Olympics
24 needs to be validated by urban observations. As a result of the combined effects of both
25 NO_x and VOCs emission reductions during the Olympics, the model successfully
26 reproduced changes in ozone concentrations observed at the Miyun site, 100 km
27 downwind of Beijing, where the ozone production is expected to be more linear.

28 Figures 10b and 10c display the spatial distribution of the resulting reduction in O₃,
29 averaged separately over the PBL and over the free troposphere (2-6 km) respectively. As
30 expected, the largest reduction is found over Beijing, averaging about 12 ppbv for August

1 2008. Because of the control on regional emissions as well as the relatively long lifetime
2 of O₃, the impact of the imposed reduction in emissions is found to extend far beyond the
3 Beijing urban area, covering a large region over the North China Plain and Northeastern
4 China. Both the magnitude and spatial extension of the simulated reductions are larger to
5 the northeast of Beijing than to its southeast, reflecting the direction of the prevailing
6 winds during this season. Within the PBL, the areas with mean O₃ reductions exceeding 4
7 ppbv extend northeastward from Beijing to about 45° N in Jilin province and
8 southeastward to about 37° N in Hebei province. The reduction in the FT is about 50%
9 less than in the PBL. The 2 ppb reduction isopleth in the FT extends northeastward from
10 Beijing to about 45° N in Jilin province and southeastward to about 37° N in Hebei
11 province.

13 **5. Concluding Remarks**

14 To improve air quality during the Olympics (8-24 August 2008) and the
15 Paralympics (9-17 September 2008), a series of aggressive measures was implemented
16 by the Chinese government to reduce pollutant emissions in Beijing and surrounding
17 areas, in place for more than two months during the interval of the two Games. We
18 conclude that the emission restrictions were notably successful in improving air quality
19 over Beijing. In August 2008, significant reductions in mixing ratios of O₃, CO, NO_y, and
20 SO₂ were detected at Miyun, a rural site located 100 km downwind of the Beijing urban
21 center, based on comparison with comparative data for August 2006-2007. The mean
22 daytime mixing ratio of O₃ was reduced by about 15 ppbv in August 2008 from 65 ppbv
23 in August 2006-2007, while daytime O₃ averaged only 45 ppbv during the time period of
24 the Olympics (4 August – 24 August 2008). The decrease in O₃ was most significant in
25 the afternoon when *in situ* photochemical production of O₃ is most active. The reduction
26 in O₃ was reflected not only in mean but also in peak concentrations.

27 In August 2008, the relative reductions in daytime mixing ratios of SO₂, CO, and
28 NO_y observed at Miyun amounted to 61%, 25%, and 21%, respectively as compared to
29 the same month a year earlier. Concentrations of the three species are positively

1 correlated at Miyun, indicating that they originate from co-located sources. While there is
2 no significant change in the dCO/dNO_y enhancement ratio from August 2007 to 2008, the
3 dCO/dSO_2 and dNO_y/dSO_2 enhancement ratios in August 2008 are significantly larger
4 than values for August 2007, suggesting that the relative reduction of SO_2 emissions is
5 much larger than that of CO and NO_x . Control strategies targeting the power sector
6 reduced emissions of SO_2 and NO_x , but most effectively for the former, resulting in
7 increases in the NO_x/SO_2 , CO/SO_2 , and CO/NO_x ratios. Because of the strict ban placed
8 on old, inefficient vehicles, the traffic restriction tended to decrease the CO/NO_x ratio,
9 compensating for the effect of power sector emission control. The changes in the
10 enhancement ratios, after excluding the impact of the variability of SO_2 lifetime, indicate
11 that the relative reductions in emissions of SO_2 , CO, and NO_x in August 2008 correspond
12 to 60%, 32%, and 36%, respectively, as compared with the same month the year earlier.
13 Our 'top-down' estimate of the reductions is found to be consistent with the bottom-up
14 estimate for SO_2 but is lower for CO and NO_x . The combination of the top-down and
15 bottom-up estimates on emissions of different species is used to define the Olympics
16 emissions used to drive the model simulation.

17 The nested-grid GEOS-Chem model with $0.5^\circ \times 0.667^\circ$ horizontal resolution over
18 China is found to reproduce well the day-to-day variations in O_3 , CO, NO_y , and SO_2
19 observed at Miyun but significantly overestimates mixing ratios derived using the
20 standard 2007 emissions. Adoption of the Olympics emission reconstruction in the model
21 leads not only to significant reductions in model biases but also to improvements in the
22 temporal correlations between model and observations. Analysis of meteorological
23 conditions observed at Miyun for the three years covered by the present observations and
24 interpretation of the observations using the model both suggest that the reduction in
25 emissions of ozone precursors associated with the Olympic Games made a significant
26 contribution to the observed decrease in O_3 during August 2008, accounting for 80% of
27 the O_3 reduction for the month as a whole and 45% during the Olympics Period (8-24
28 August). Because of the controls on regional emissions as well as the relatively long
29 lifetime of O_3 , the model predicts that emission restrictions can affect O_3 far beyond the
30 Beijing urban area, resulting in boundary layer O_3 reductions of 2-10 ppbv over a large

1 region of the North China Plain and Northeastern China.

2

3

4 **Acknowledgement:**

5 This research was supported by the National Science Foundation, grant ATM-0635548,
6 by the Harvard University Smeltzer Fund and by funds from an anonymous private
7 foundation. Y. Wang and JM Hao are supported by the National Science Foundation of
8 China, 20921140095.

9

10

11 **References:**

- 12 Beirle, S., U. Platt, M. Wenig, and T. Wagner, Weekly cycle of NO₂ by GOME
13 measurements: A signature of anthropogenic sources, *Atmos. Chem. Phys.*, 3,
14 2225– 2232, 2003
- 15 Bey, I., D. J. Jacob, R. M. Yantosca, J. A. Logan, B. Field, A. M. Fiore, Q. Li, H. Liu, L. J.
16 Mickley, and M. Schultz, Global modeling of tropospheric chemistry with
17 assimilated meteorology: Model description and evaluation, *J. Geophys. Res.*, 106,
18 23,073-23,096, 2001
- 19 Chen, D., Y.X. Wang, M.B. McElroy, K. He, R.M. Yantosca, and P. Le Sager, Regional
20 CO pollution and export in China simulated by the high-resolution nested-grid
21 GEOS-Chem model, *Atmos. Chem. Phys.*, 9, 3825-3839, 2009
- 22 Cheng, Y. F., J. Heintzenberg, B. Wehner, Z. J. Wu, M. Hu, and J. T. Mao, Traffic
23 restrictions in Beijing during the Sino-African Summit 2006: aerosol size
24 distribution and visibility compared to long-term in situ observations, *Atmos.*
25 *Chem. Phys.*, 8, 7583-7594, 2008
- 26 Chou, C. C.-K., C.-Y. Tsai, C.-J. Shiu, S. C. Liu, and T. Zhu, Measurement of NOy
27 during Campaign of Air Quality Research in Beijing 2006 (CAREBeijing-2006):
28 Implications for the ozone production efficiency of NOx, *J. Geophys. Res.*, 114,
29 D00G01, doi:10.1029/2008JD010446, 2009
- 30 Davis, J.M. and P. Speckman, A model for predicting maximum and 8h average ozone in
31 Houston, *Atmospheric Environment*, 33:2487-2500, 1999
- 32 Ding, A.J., T. Wang, V. Thouret, J.-P. Cammas, and P. Nédélec, Tropospheric ozone
33 climatology over Beijing: analysis of aircraft data from the MOZAIC program.
34 *Atmos. Chem. Phys.*, 8, 1-13, 2008.
- 35 Elminir, HK, Dependence of urban air pollutants on meteorology, *Science of the total*
36 *environment*, 350, 225-237, 2005
- 37 Hao, J. M., and L. T. Wang, Improving urban air quality in China: Beijing case study, *J.*

- 1 *Air Waste Manage. Assoc.*, 55, 1298–1305, 2005
- 2 Harley, R. A., Marr, L. C., Lehner, J. K., and Giddings, S. N.:Changes in motor vehicle
3 emissions on diurnal to decadal time scales and effects on atmospheric
4 composition, *Environ. Sci. Technol.*, 39, 5356–362, 2005
- 5 Hirsch, R. M., and E. J. Gilroy, Methods of fitting a straight line to data: Examples in
6 water resources, *Water Resour. Bull.*, 20, 705– 711, 1984
- 7 Lin, W., X. Xu, X. Zhang, and J. Tang, Contribution of pollutants from North China Plain
8 to surface ozone at the Shangdianzi GAW station, *Atmos. Chem. Phys. Discus*, 8,
9 9139-9165, 2008.
- 10 Murphy, J.G., D.A. Day, P.A. Cleary, P.J. Wooldridge, D.B. Millet, A.H. Goldstein and
11 R.C. Cohen, The weekend effect within and downwind of Sacramento: Part 2.
12 Observational evidence for chemical and dynamical contributions, *Atmos. Chem.*
13 *Phys. Disc.* 6, 11971-12019, 2006
- 14 Murphy, J.G., D.A. Day, P.A. Cleary, P.J. Wooldridge, D.B. Millet, A.H. Goldstein and
15 R.C. Cohen, The weekend effect within and downwind of Sacramento: Part 1.
16 Observations of ozone, nitrogen oxides, and VOC reactivity, *Atmos. Chem. Phys.*
17 7, 5327-5339, 2007
- 18 NRC (National Research Council): Rethinking the ozone problem in urban and regional
19 air pollution, National Academy Press, Washington, D.C., 1991
- 20 Ohara, T., H. Akimoto, J. Kurokawa, N. Horii, K. Yamaji, X. Yan, and T. Hayasaka, An
21 Asian emission inventory of anthropogenic emission sources for the period 1980
22 – 2020, *Atmos. Chem. Phys.*, 7, 4419-4444, 2007.
- 23 Platnick, S., M. D. King, S. A. Ackerman, W. P. Menzel, B. A. Baum, J. C. Riedi, and R.
24 A. Frey, The MODIS cloud products: Algorithms and examples from Terra, *IEEE*
25 *Trans. Geosci. Remote Sens.*, 41(2), 459–473, 2003
- 26 Sillman, S., J. A. Logan, and S. C. Wofsy. The sensitivity of ozone to nitrogen oxides and
27 hydrocarbons in regional ozone episodes, *J. Geophys. Res.*, 95, 1837-1852, 1990
- 28 Sillman, S.: The Use of NO_y, H₂O₂, and HNO₃ as indicators for
29 ozone-NO_x-hydrocarbon sensitivity in urban locations, *J. Geophys. Res.*, 100,
30 14175–14 188, 1995
- 31 Streets, DG., JHS Fu, CJ Jang, JM Hao, KB He, XY Tang, YH Zhang, ZF Wang, ZP Li, Q
32 Zhang, LT Wang, BY Wang, C Yu . Air quality during the 2008 Beijing Olympic
33 Games. *Atmospheric Environment*, 41(3):480-492, 2007
- 34 Trainer, M., D.D. Parrish, P.D. Goldan, J. Roberts, F.C. Fehsenfeld, Review of
35 observation-based analysis of the regional factors influencing ozone
36 concentrations, *Atmospheric Environment*, 34, 2045-2061, 2000
- 37 Wang LT, JM Hao, KB He, SX Wang, JH Li, Q Zhang, DG Streets, JS Fu, CJ Jang, H
38 Takekawa, S Chatani. A modeling study of coarse particulate matter pollution in
39 Beijing: Regional source contributions and control implications for the 2008

1 summer Olympics, *J. Air Waste Manage. Assoc.*, 58(8): 1057-1069, 2008a

2 Wang, T., A. Ding, J. Gao, and W. S. Wu, Strong ozone production in urban plumes from
3 Beijing, China, *Geophys. Res. Lett.*, 33, L21806, doi:10.1029/2006GL027689,
4 2006

5 Wang, Y. X., M. B. McElroy, D. J. Jacob, and R. M. Yantosca, A nested grid formulation
6 for chemical transport over Asia: Applications to CO, *J. Geophys. Res.*, 109,
7 D22307, doi:10.1029/2004JD005237, 2004a

8 Wang, Y. X., M. B. McElroy, T. Wang, and P. I. Palmer, Asian emissions of CO and NO_x:
9 Constraints from aircraft and Chinese station data, *J. Geophys. Res.*, 109, D24304,
10 doi:10.1029/2004JD005250, 2004b

11 Wang, Y.X., M. B. McElroy, J. W. Munger, J. Hao, H. Ma, C. P. Nielsen, and Y. Chen,
12 Variations of O₃ and CO in summertime at a rural site near Beijing, *Atmos. Chem.*
13 *Phys.*, 8, 6355-6363, 2008b

14 Wild, O., X. Zhu, and M. J. Prather, Fast-J: Accurate simulation of in- and below cloud
15 photolysis in tropospheric chemical models, *J. Atmos. Chem.*, 37, 245– 282, 2000

16 Zhang, Q., et al, NO_x emission trends for China, 1995-2004: The view from the ground
17 and the view from space, *J. Geophys. Res.*, D22306, doi:10.1029/2007JD008684,
18 2007

19 Zhang, Q., D. G. Streets, G. R. Carmichael, K. He, H. Huo, A. Kannari, Z. Klimont, I.
20 Park, S. Reddy, J. S. Fu, D. Chen, L. Duan, Y. Lei, L. Wang, and Z. Yao, Asian
21 emissions in 2006 for the NASA INTEX-B mission, *Atmos. Chem. Phys. Discuss.*,
22 9, 4081–4139, 2009

23 Zhao, Y., SX Wang, L. Duan, et al. Primary air pollutant emissions of coal-fired power
24 plants in China: Current status and future prediction. *Atmospheric Environment*,
25 42, 8442-8452, 2008

26

27

28

29

30

1
2
3
Tables

4 **Table 1** Mean afternoon mixing ratios (ppbv) of SO₂, CO, NO_y, and O₃ associated with
5 SSW-SW-S winds observed at the Miyun site in August 2007 and 2008.
6

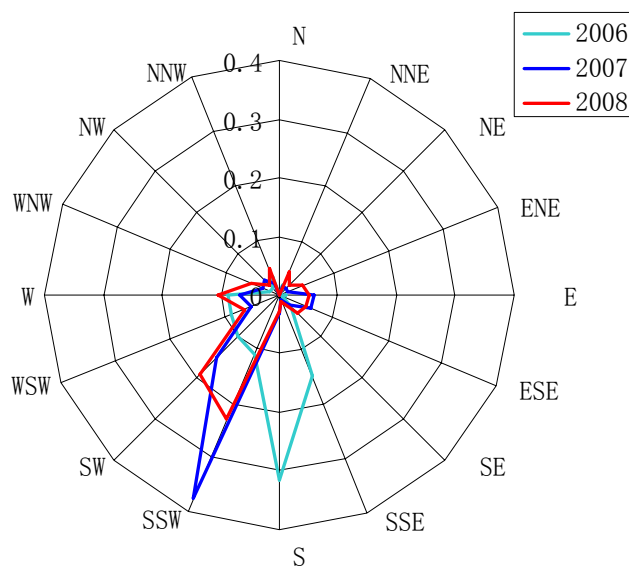
	August 2007	August 2008	Reduction (%)
SO ₂	6.2	2.4	61.3
CO	468	352	24.8
NO _y	11.7	9.2	21.4
O ₃	78	58	25.6

7
8
9 **Table 2** Observed and modeled anomaly of afternoon O₃ (ppb) for August 2008 and
10 its decomposition averaged for different days in August.

		August 1 - 28	August 1-7	August 8-24
Observed anomaly (composite)		-12.7	16	-26
Modeled anomaly and decomposition	Composite	-11.2	14	-22
	Meteorology-driven	-2.3	25	-12
	Emission-driven	-8.9	-11	-10

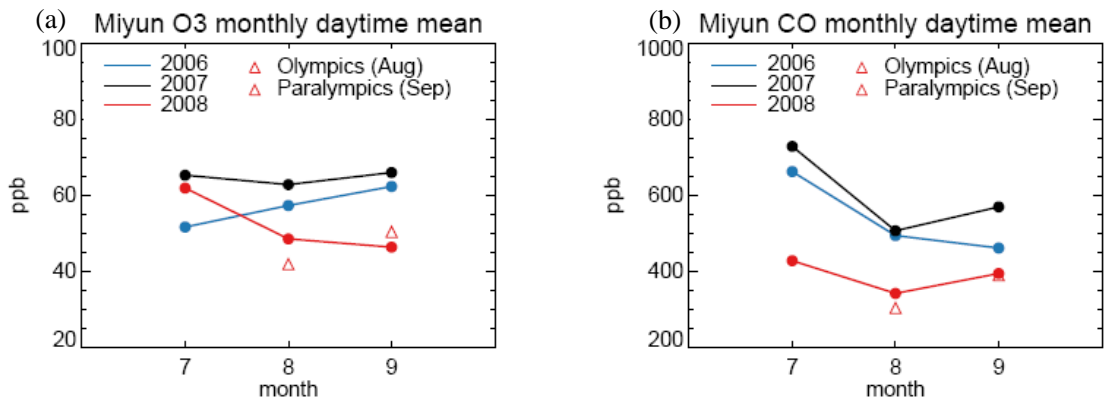
11
12
13 **Figures**

Miyun Afternoon Wind Directions in August

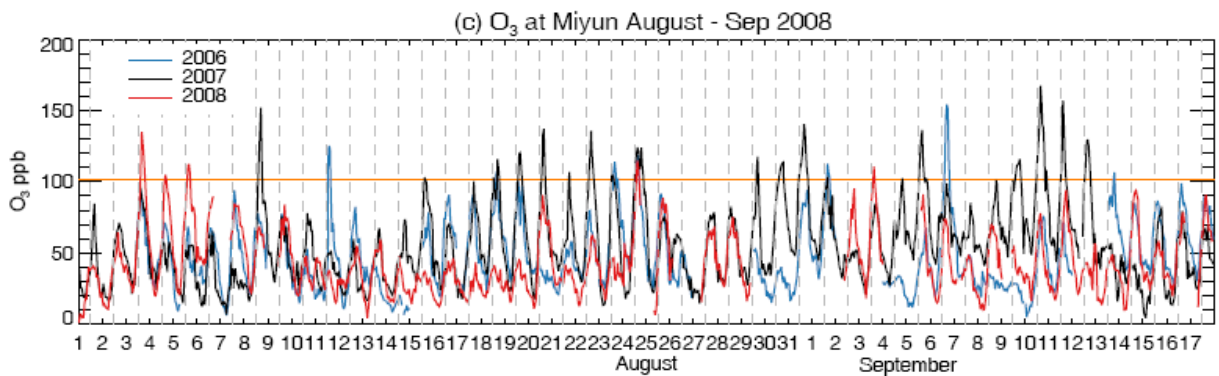


14 **Figure 1.** Wind roses of afternoon wind directions at Miyun in August 2006 (light blue),
15 2007 (blue), and 2008 (red). The radius indicates the frequency of wind observed in each
16 direction.
17
18

1



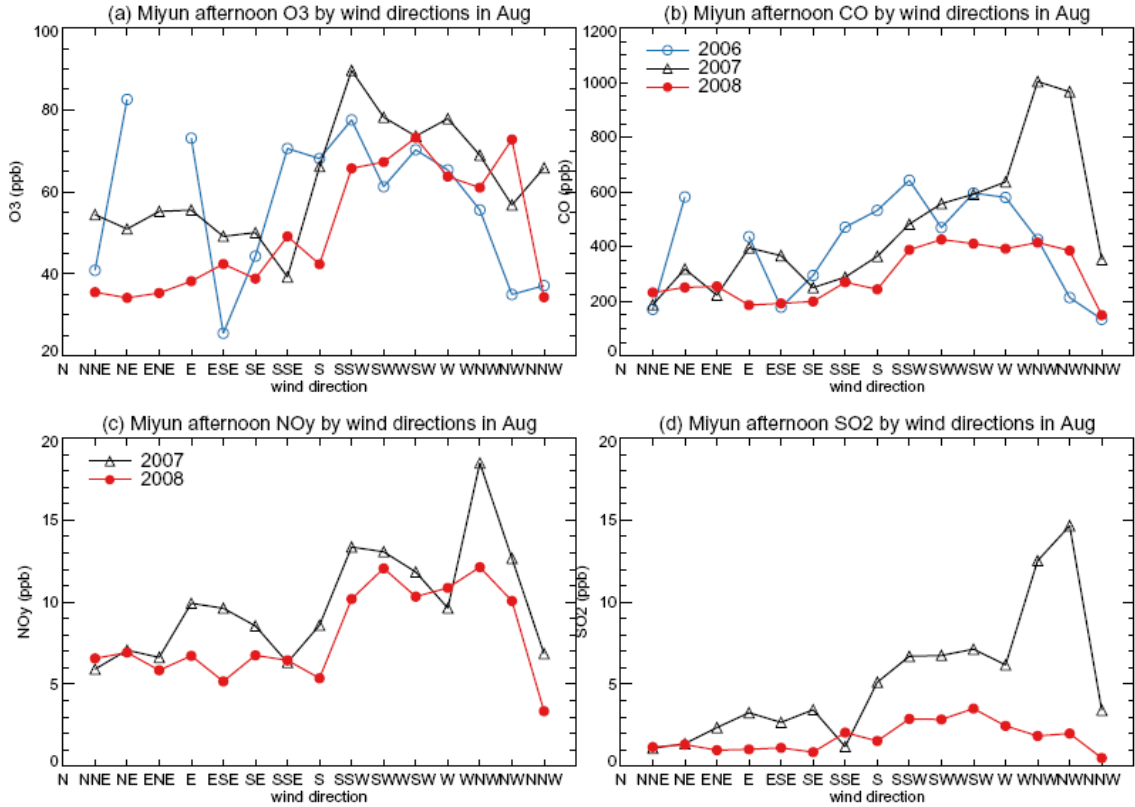
2



3

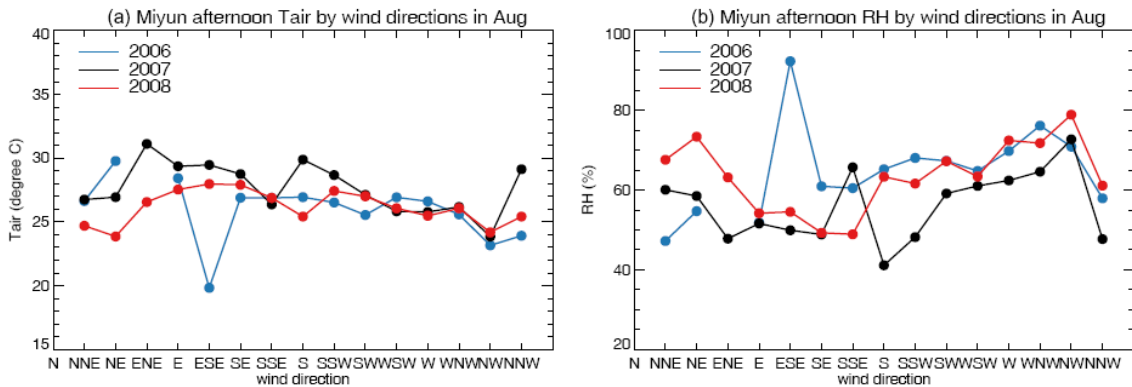
4 **Figure 2.** Daytime mean mixing ratios of O₃ (2a) and CO (2b) observed at Miyun for
5 July-August-September of 2006 (blue line), 2007 (black line) and 2008 (red line). The
6 triangles indicate the mixing ratios averaged for the exact time period of the Olympics
7 Games (4-24 August 2008) and the Paralympics Games (6-17 September 2008). (2c)
8 Hourly mixing ratio of O₃ observed at Miyun for the period 1 August – 17 September of
9 2006 (blue line), 2007 (black line), and 2008 (red line).

10



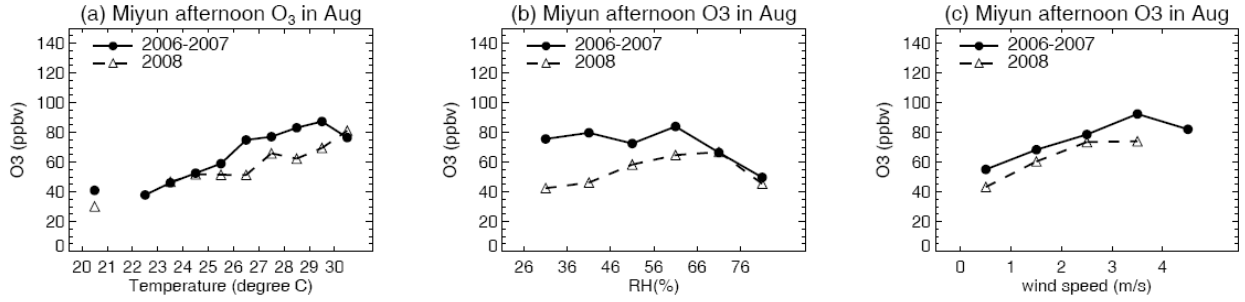
1
2
3
4
5
6

Figure 3. Afternoon mixing ratios of O₃ (3a), CO (3b), NO_y (3c), and SO₂ (3d) observed at Miyun in August as a function of wind directions. Data for August 2006 are displayed in blue, Aug 2007 in black, and Aug 2008 in red. Observations of NO_y and SO₂ were not available in 2006.



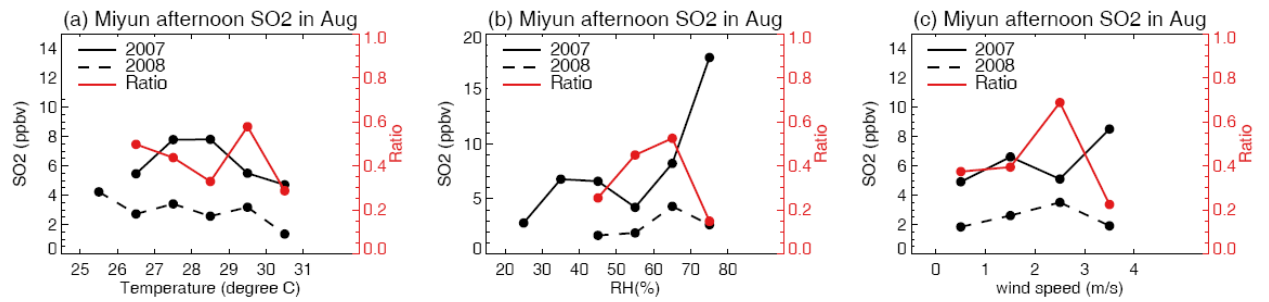
7
8
9
10
11

Figure 4. Air temperature and relative humidity observed at Miyun in August as a function of wind directions. Data for August 2006 are displayed in blue, Aug 2007 in black, and Aug 2008 in red.



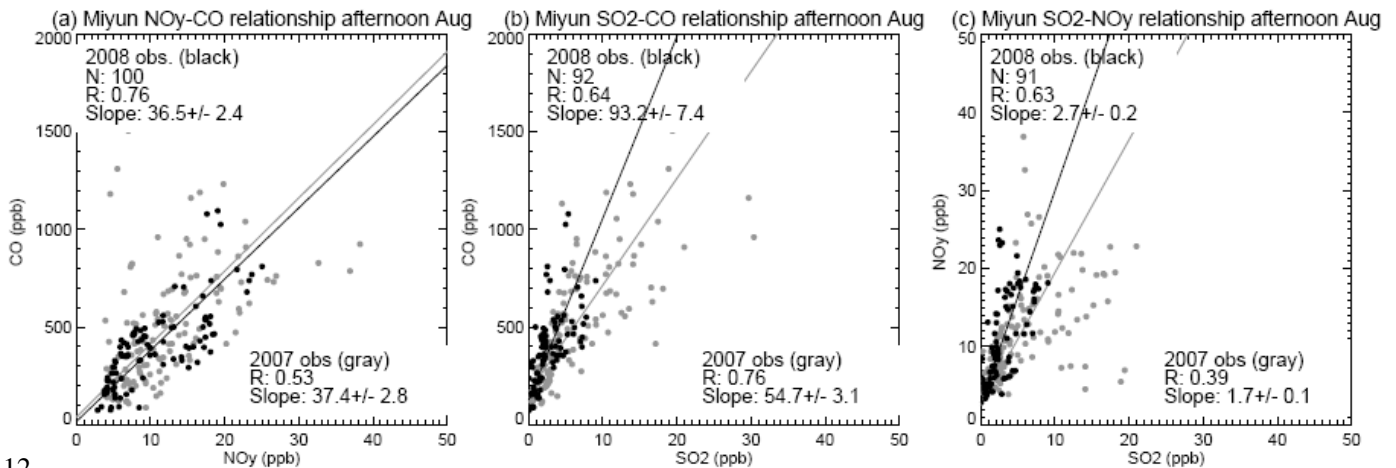
1
2
3
4
5

Figure 5. Mixing ratio of afternoon mean O_3 observed at Miyun in August as a function of temperature (a), RH (b), and wind speed (c). Data averaged for Augusts of 2006 and 2007 are indicated in solid black line, for August 2008 in dashed black line.



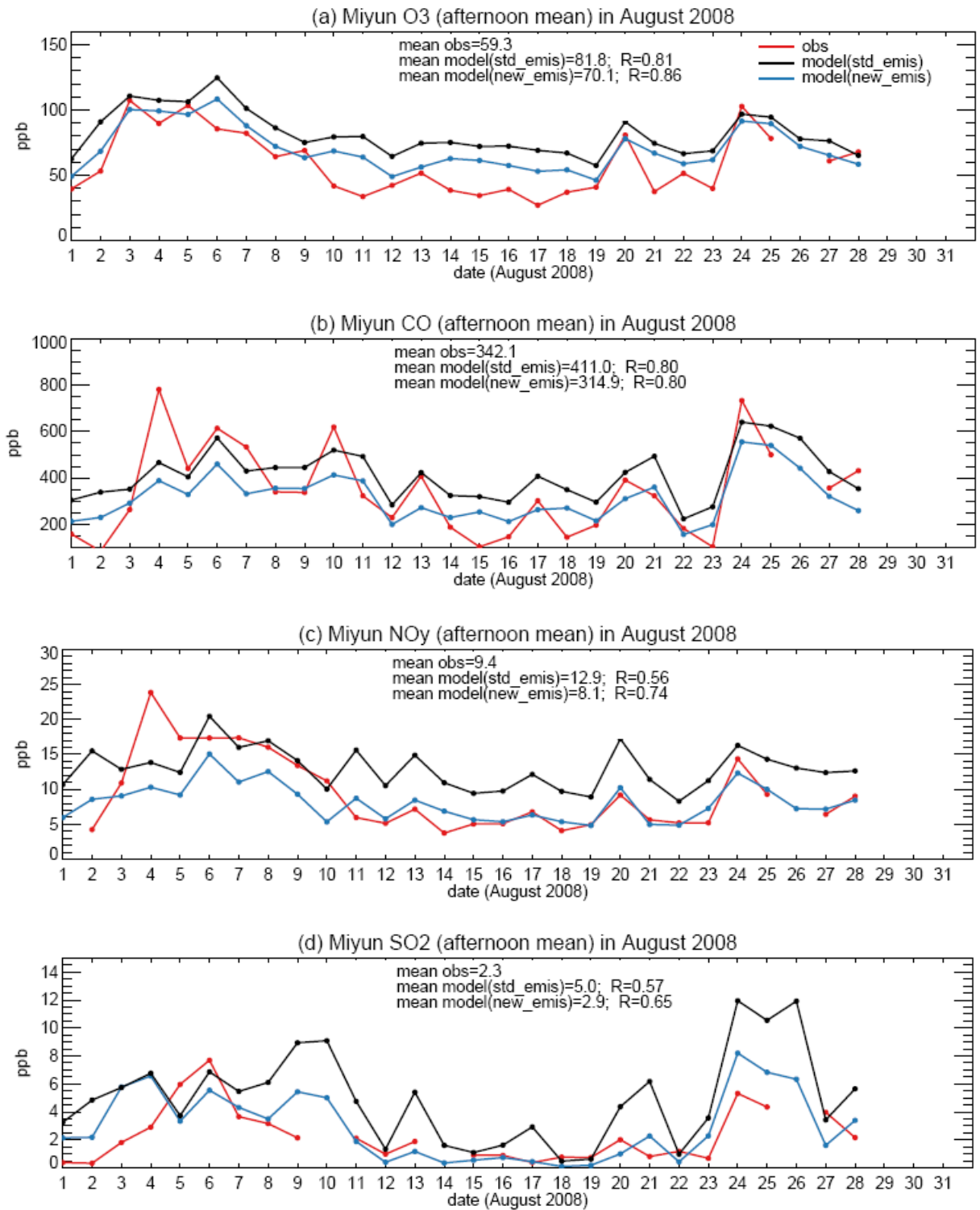
6
7
8
9
10
11

Figure 6. Mixing ratio of SO_2 observed in SW-SSW-S air masses at Miyun in August as a function of temperature (a), relative humidity (b), and wind speeds (c). Data for August 2007 are indicated in solid black line, August 2008 in dashed black line, and the ratio between August 2008 and 2007 ($[SO_2]_{2008}/[SO_2]_{2007}$) in red line.



12
13
14
15
16
17
18
19

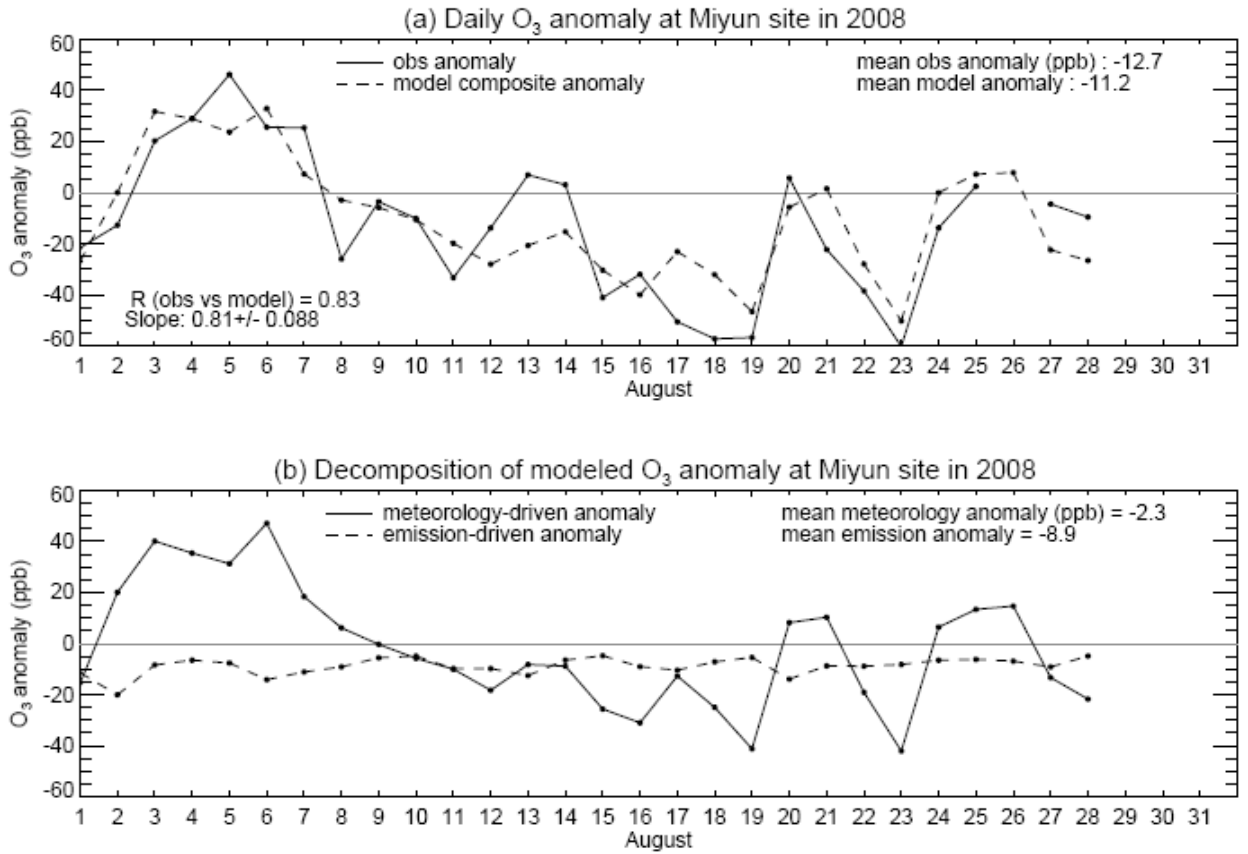
Figure 7. (a) NO_y -CO relationship in afternoon observations at Miyun in August 2007 (gray dots) and August 2008 (black dots). Each point refers to hourly mean mixing ratios. Correlation coefficients (R) and slopes of the reduced major-axis regression lines are shown in inset; (b) same as (a), but for SO_2 -CO relationship; (c) same as (a), but for SO_2 - NO_y relationship.



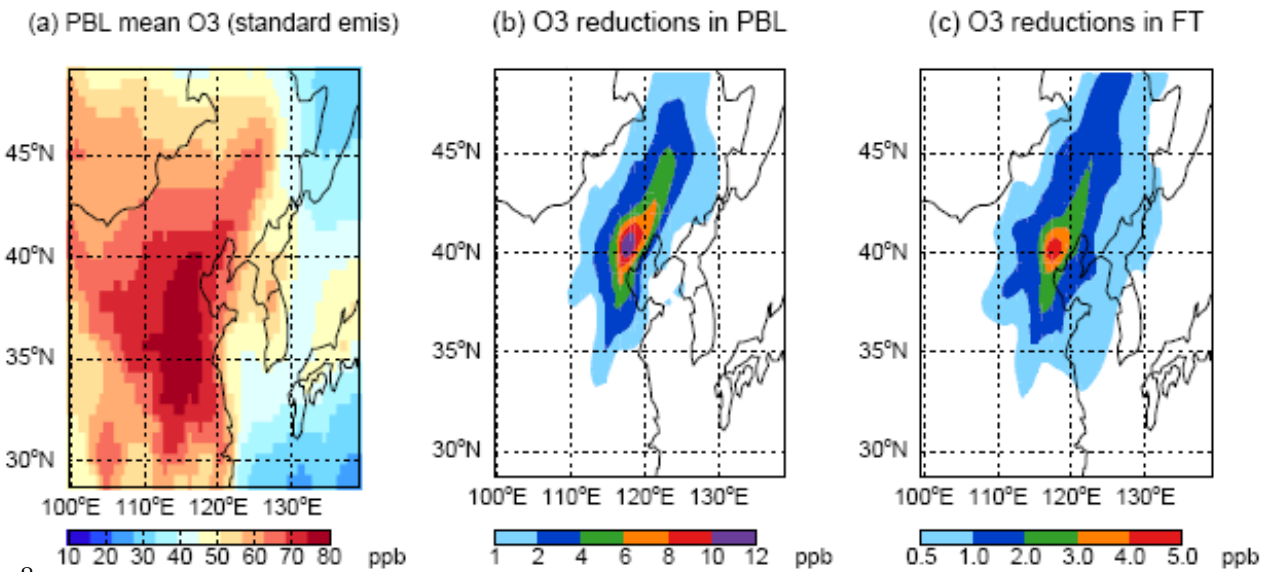
1

2

3 **Figure 8.** Day-to-day variations in O₃ (7a), CO (7b), NO_y (7c), and SO₂ (7d) at Miyun in
 4 August 2008. Observations are indicated in red, the GEOS-Chem model results using the
 5 standard emissions in black and the model results using the Olympics emissions in blue.



1
 2 **Figure 9.** (a) Daily O₃ anomaly in August 2008 at Miyun. The observed anomaly is
 3 shown in solid lines and the modeled anomaly in dashed lines. The daily O₃ anomaly is
 4 defined as the deviation of afternoon mean O₃ in August 2008 from the mean values in
 5 August 2006 and 2007. (b) The meteorology-driven O₃ anomaly (solid line) and the
 6 emission-driven anomaly (dashed line) as simulated by the GEOS-Chem model.
 7



8
 9 **Figure 10.** (a) Monthly mean afternoon O₃ averaged over the planetary boundary layer

1 (PBL; 0-2 km) simulated by the GEOS-Chem model using the standard emissions for
2 August 2008; (b) Reductions in PBL O₃ indicated by model results using the Olympics
3 emissions as compared with the standard emissions; (c) same as (b), but for O₃
4 reductions in the free troposphere (2-5 km).

5
6
7
8
9