



# Recess Reimagined: The Intergenerational Campus

## Citation

Lopez-Videla, Angela. 2024. Recess Reimagined: The Intergenerational Campus. Master's thesis, Harvard Graduate School of Design.

## Permanent link

<https://nrs.harvard.edu/URN-3:HUL.INSTREPOS:37378235>

## Terms of Use

This article was downloaded from Harvard University's DASH repository, and is made available under the terms and conditions applicable to Other Posted Material, as set forth at <http://nrs.harvard.edu/urn-3:HUL.InstRepos:dash.current.terms-of-use#LAA>

## Share Your Story

The Harvard community has made this article openly available. Please share how this access benefits you. [Submit a story](#).

[Accessibility](#)

# **IECP Design Guide**

Los Angeles Unified School District

# IECP Design Guide Contents

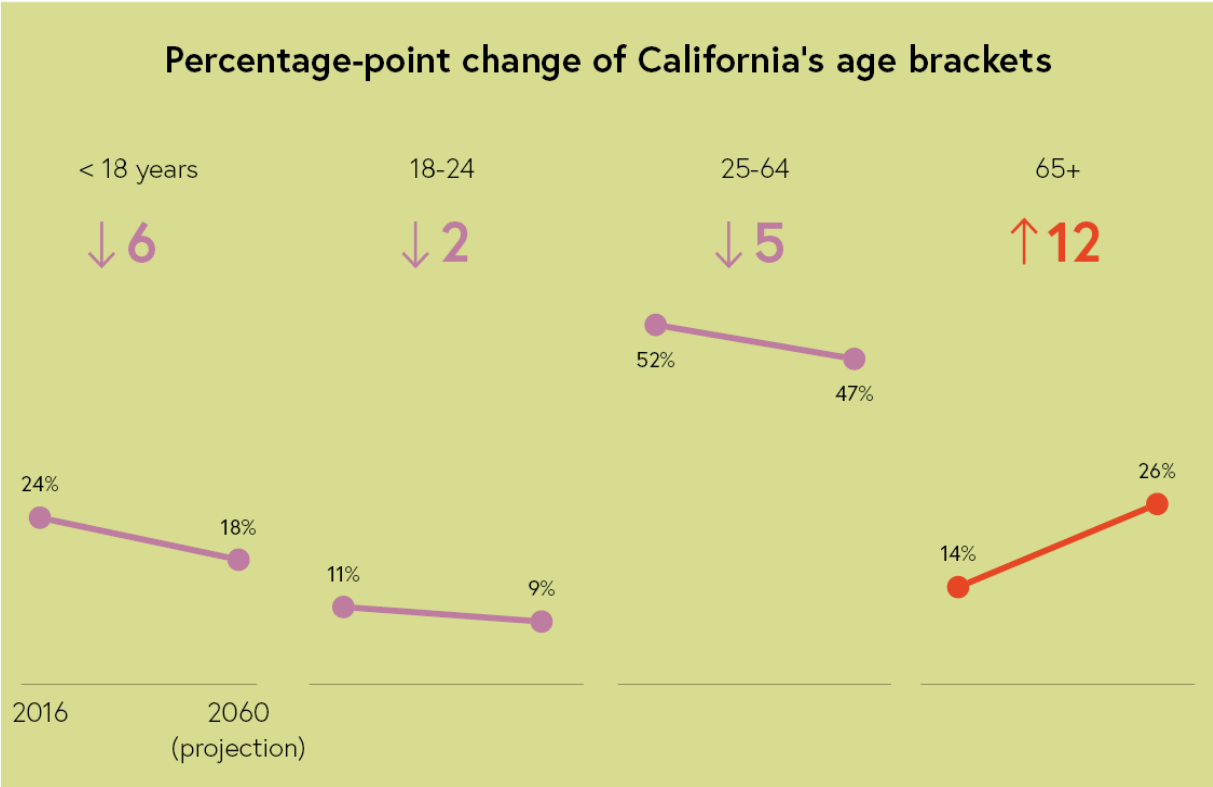
Introduction	3
Design Principles	5
Site Selection Criteria	7
Architectural Design	9
Community Integration	11
Amenities and Facilities	13
Case Study: Hobart Elementary School	14
Addressing Concerns	17
Conclusion	18

## **Introduction**

The Intergenerational Enrichment Campus Program (IECP) Design Guide, provided by the Los Angeles Unified School District (LAUSD), is a pioneering initiative aimed at addressing Los Angeles' pressing urban development challenges, including the severe housing crisis, the urban heat island effect, and the increasing social isolation among the aging population. This guide presents a comprehensive framework for transforming LAUSD elementary school campuses into vibrant, intergenerational community spaces.

Through innovative architectural and environmental design, the IECP seeks to harmoniously integrate senior housing and upgraded school facilities, fostering a unique synergy between young students and the elderly. By reimagining underutilized school spaces, the program aims not only to provide sustainable housing solutions but also to enhance educational environments and community engagement.

This guide outlines the principles, design strategies, and practical considerations for developing these intergenerational spaces, ensuring they meet the highest standards of sustainability, accessibility, and community integration. See the next page for a diagram illustrating the growth of our senior population in Los Angeles:

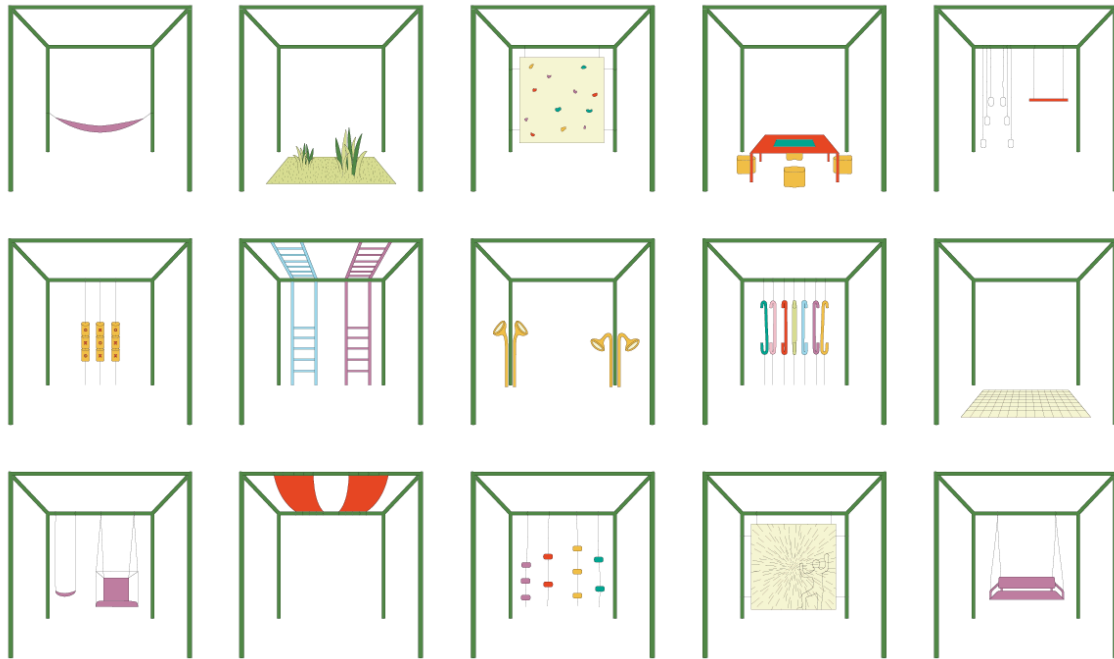


## Design Principles

The design principles for the Intergenerational Enrichment Campus Program (IECP) are anchored in fostering a harmonious, sustainable, and age-inclusive environment. These principles are:

1. **Intergenerational Interaction:** Designing spaces that encourage meaningful interactions between students and the elderly, fostering mutual understanding and learning.
2. **Environmental Sustainability:** Implementing eco-friendly design elements to address the urban heat island effect and promote green living, such as permeable surfaces and natural shading.
3. **Inclusivity and Accessibility:** Ensuring that all facilities are accessible and welcoming to individuals of all ages and abilities.
4. **Community-Centric Design:** Creating spaces that serve not just as housing and educational facilities, but also as community hubs for broader neighborhood engagement.
5. **Adaptive and Flexible Use:** Designing versatile spaces that can adapt to various activities and needs throughout the day and week.

These principles guide the development of IECP projects, ensuring they are not only functional and sustainable, but also integral to building stronger community ties. See the next page for a diagram showing how a simple, inexpensive, and flexible 10' by 10' scaffolding construction can hold all different types of activities and environmental experiences:



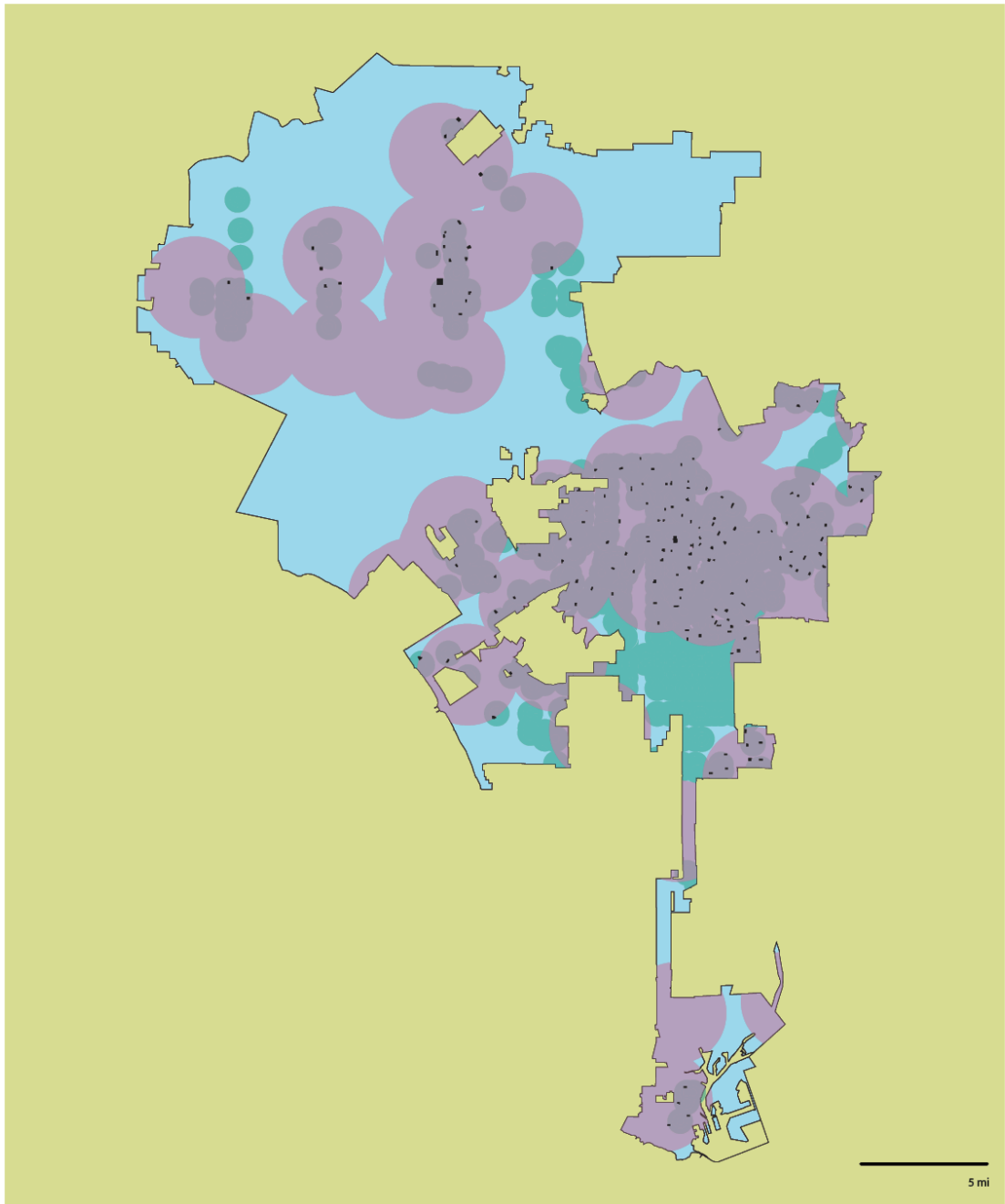
## Site Selection Criteria

The site selection for the Intergenerational Enrichment Campus Program (IECP) is crucial to its success. Key criteria include:

1. **Proximity to Essential Services:** Prioritize locations near hospitals, public transit, and community resources to ensure accessibility and convenience for seniors and school communities.
2. **Space Availability:** Select campuses with sufficient open space to accommodate new constructions without significantly disrupting existing school activities.
3. **Community Integration Potential:** Choose sites where the program can enhance the local neighborhood, fostering a sense of community belonging.
4. **Environmental Suitability:** Ensure the site can support sustainable design elements, like green spaces and energy-efficient buildings.

These criteria aim to balance the needs of the elderly, students, and the broader community, ensuring that each IECP site is optimally chosen for maximum impact and benefit. See the next page for a map of all 140 targeted LAUSD elementary schools within transit-oriented communities, and within 2 miles of a hospital in Los Angeles:





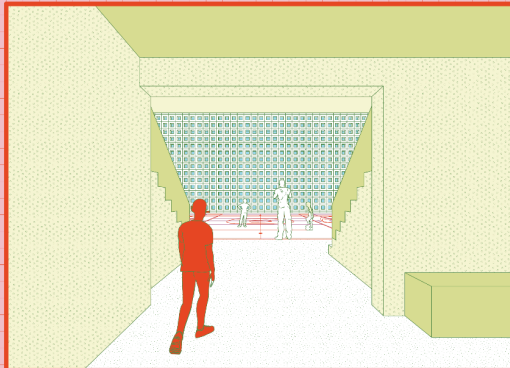
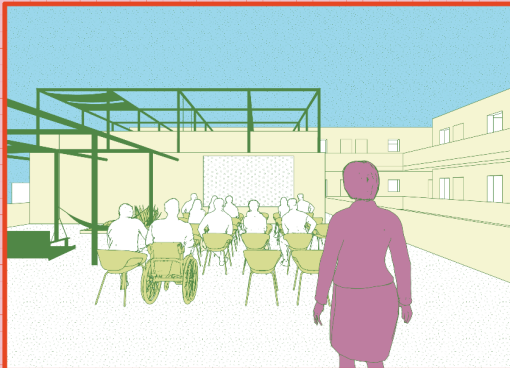
- Transit Oriented Communities
- Hospitals 2-mile Buffer
- City of Los Angeles
- Schools of Interest

# Architectural Design

The architectural design for the Intergenerational Enrichment Campus Program (IECP) reflects a commitment to creating spaces that are both functional and inspirational. Key elements include:

1. **Senior-Friendly Design:** Incorporating features like barrier-free access, ample natural lighting, and ergonomic spaces to ensure comfort and safety for the elderly.
2. **Environmentally Conscious Materials:** Utilizing sustainable materials like stucco and breezeblocks for their durability, cost-effectiveness, and aesthetic appeal.
3. **Building Massing and Orientation:** Thoughtfully positioning buildings to foster interaction between seniors and students, with designs that open towards school areas to encourage engagement.
4. **Common Spaces for Socialization:** Designing ample communal areas to combat social isolation among seniors, including shared kitchens, libraries, and rooftop terraces.

These design considerations aim to create a cohesive architectural identity for IECP sites that is both environmentally sustainable and conducive to fostering community connections.

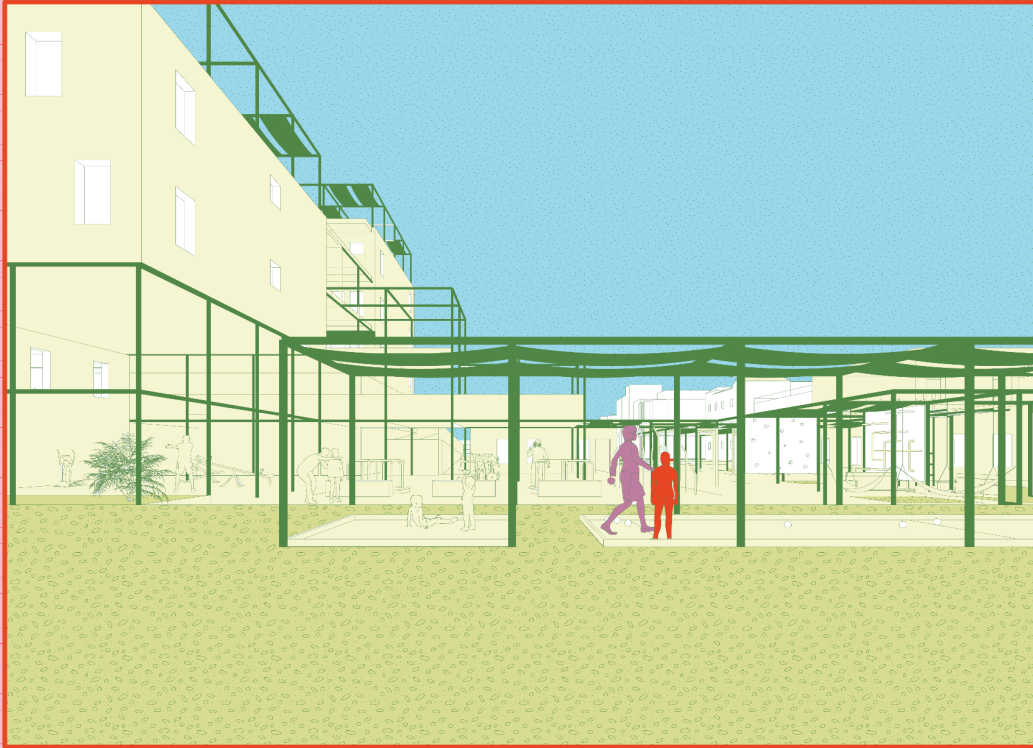


# Community Integration

Community integration is a cornerstone of the IECP. This section focuses on:

1. **Safety and Security:** Implementing measures that protect both the school population and senior residents while allowing for controlled interaction.
2. **Accessibility and Inclusivity:** Ensuring that the campus design is accessible to all, fostering a welcoming environment for diverse community members.
3. **Shared Facilities Usage:** Balancing the use of facilities like gyms, arts spaces, and playgrounds between students and seniors, especially outside school hours.
4. **Community Outreach and Involvement:** Encouraging local community participation in campus events and activities, strengthening neighborhood ties.

This approach aims to create a seamless blend of educational and residential spaces that serve as a hub for community engagement and intergenerational learning.

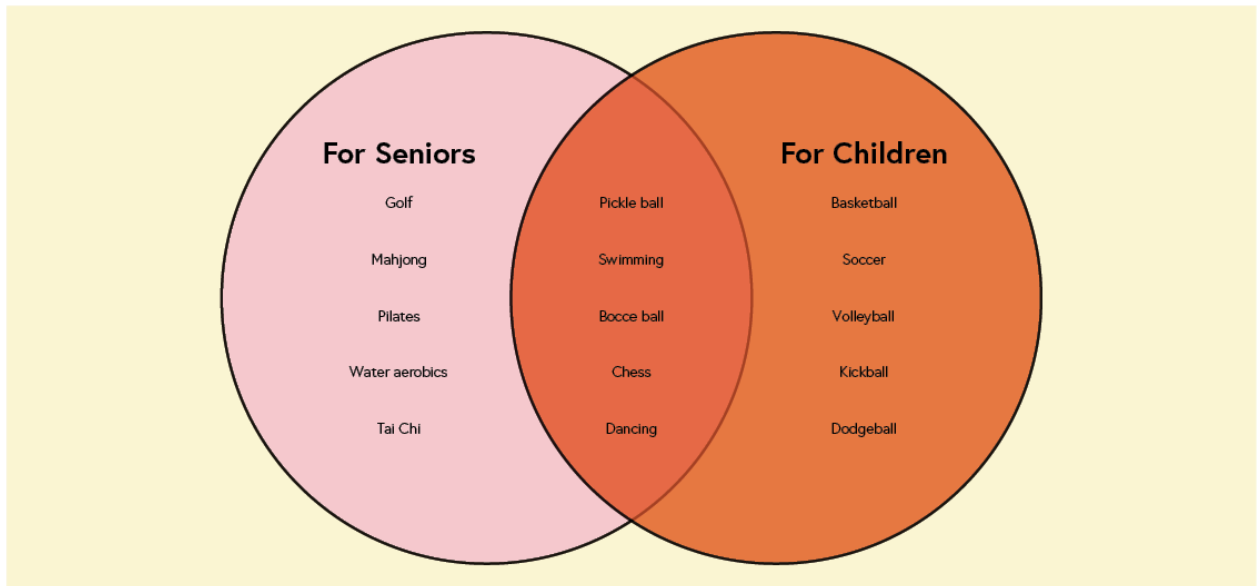


# Amenities and Facilities

The IECP emphasizes a range of amenities and facilities designed for the well-being of seniors and students:

1. **Recreational Spaces:** Shared playgrounds and sports facilities, adaptable for all ages, with a focus on non-competitive, inclusive activities.
2. **Arts and Cultural Facilities:** Spaces for music, art, and dance, encouraging creative expression and intergenerational collaboration.
3. **Health and Wellness:** On-site fitness areas and walking paths promoting physical activity for seniors and students.
4. **Community Spaces:** Shared kitchens, dining areas, computer labs, and libraries, fostering social interaction and community building.

These amenities are designed to enrich the daily lives of both seniors and students, promoting a vibrant, active, and interconnected community. Below is a diagram showing examples of possible overlapping activities that both seniors and young children can enjoy together:

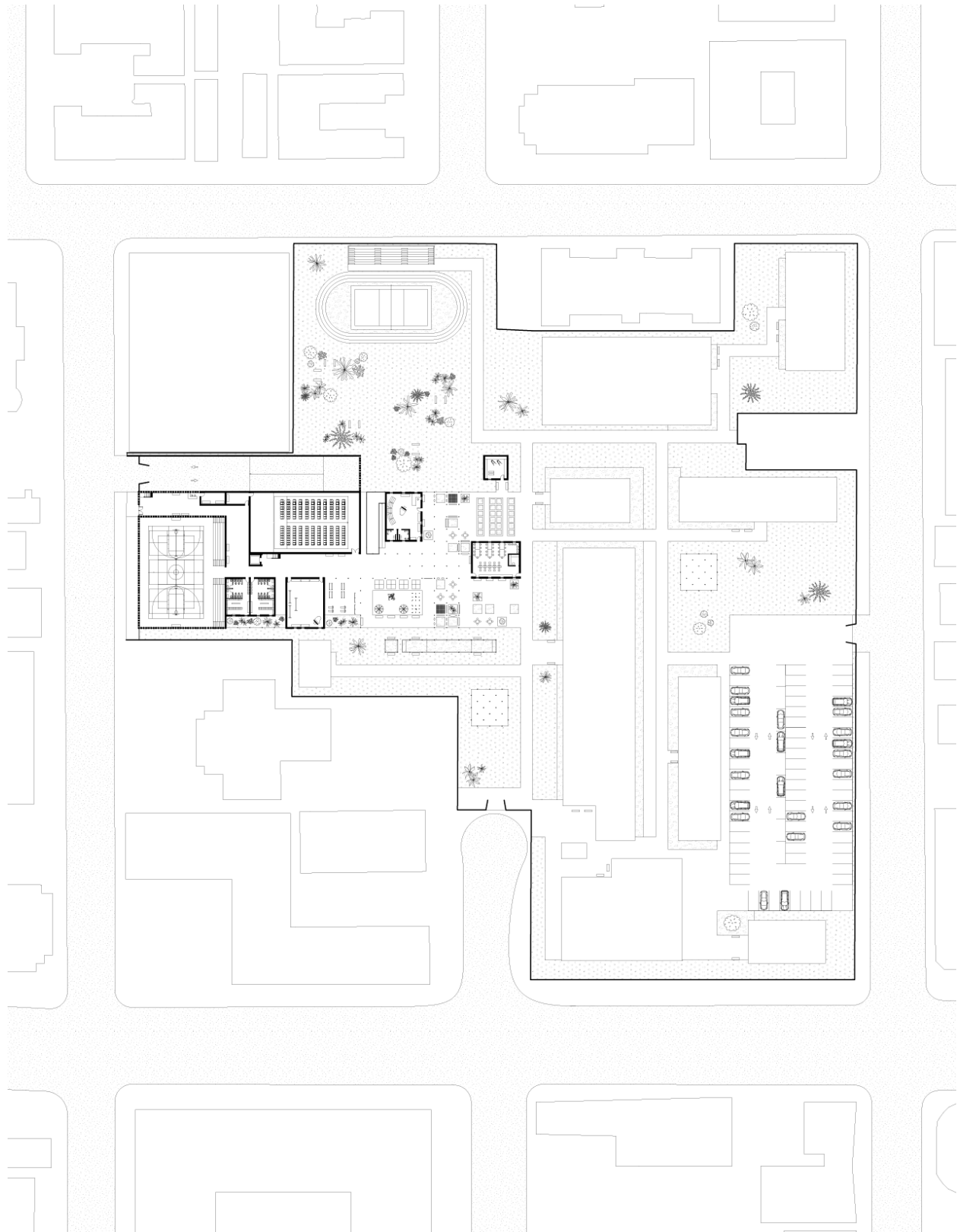


## Case Study: Hobart Elementary School

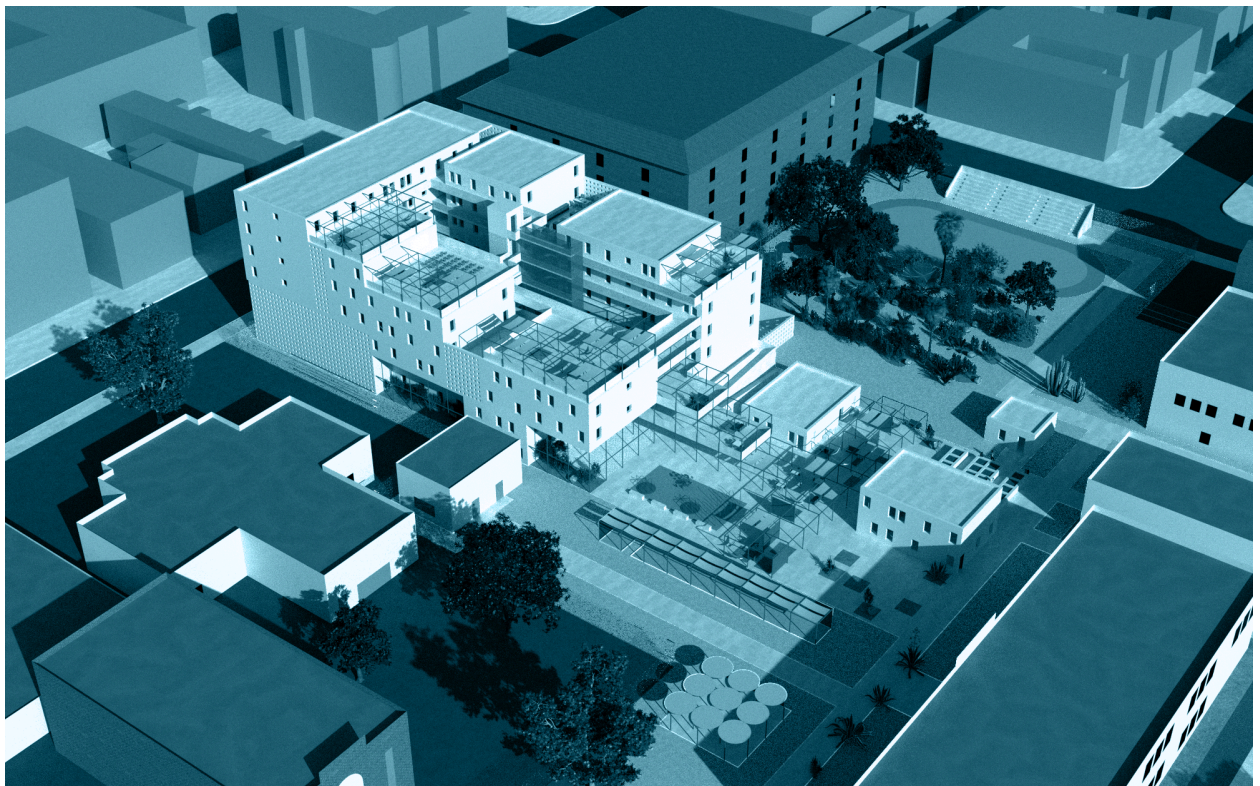
Hobart Elementary School in Koreatown, Los Angeles, serves as a prime example for the IECF. The proposed project features a 7-story senior housing building with a design sensitive to the surrounding urban landscape, matching adjacent high-rise structures. Key elements include:

- **Podium 5 over 2 Construction:** A common, affordable construction style in Los Angeles, ensuring structural integrity and cost-effectiveness.
- **Facade Design:** Utilizing stucco and breezeblocks for aesthetic appeal and functionality, providing light and ventilation.
- **Community Spaces:** Including shared amenities like a rooftop movie area, communal kitchens, and terraces, fostering social interaction.
- **Innovative Massing:** The building layout promotes visibility and interaction between residents and students, integrating school facilities like gyms and arts classrooms seamlessly into the design.
- **Modular Courtyard System:** A versatile scaffold-like structure offering various recreational uses, enhancing the courtyard as a shared, dynamic space.

This case study illustrates the feasibility and potential impact of the IECF, showcasing how thoughtful design can create a cohesive, intergenerational community environment. See the following pages for images of the Hobart Blvd. Elementary IECF Project.







## Addressing Concerns

This section addresses potential concerns regarding the IECF:

1. **Impact on Play Spaces:** The redesign of play areas is carefully planned to enrich student experiences and incorporate environmentally friendly elements, without diminishing their functionality.
2. **Why Elementary Schools?:** Research shows mutual benefits for young children and seniors in shared spaces. Elementary schools offer more flexibility in space usage, as they don't require standardized sports facilities.
3. **Security and Privacy:** Detailed protocols ensure the safety and privacy of both school students and senior residents, balancing openness with necessary security measures.

This proactive approach to addressing concerns underscores the program's commitment to thoughtful, community-centric planning.

## **Conclusion**

The IECF Design Guide outlines a visionary approach to addressing urban challenges in Los Angeles. By integrating senior housing into LAUSD elementary school campuses, the program not only offers a solution to the housing crisis but also enhances social connectivity and mitigates urban heat effects. The Hobart Elementary School case study exemplifies the program's potential to create vibrant, intergenerational communities. As we move forward, the IECF stands as a scalable, innovative model for urban development, promising a brighter, more inclusive future for Angelenos of all ages.