



# Chandra Multiwavelength Project. I. First X-Ray Source Catalog

## Citation

Kim, D.#W., R. A. Cameron, J. J. Drake, N. R. Evans, P. Freeman, T. J. Gaetz, H. Ghosh, et al. 2004. "Chandra Multiwavelength Project. I. First X-Ray Source Catalog ." The Astrophysical Journal Supplement Series 150 (1) (January): 19–41. doi:10.1086/379819.

## Published Version

doi:10.1086/379819

## Permanent link

<http://nrs.harvard.edu/urn-3:HUL.InstRepos:30212136>

## Terms of Use

This article was downloaded from Harvard University's DASH repository, and is made available under the terms and conditions applicable to Other Posted Material, as set forth at <http://nrs.harvard.edu/urn-3:HUL.InstRepos:dash.current.terms-of-use#LAA>

## Share Your Story

The Harvard community has made this article openly available.  
Please share how this access benefits you. [Submit a story](#).

[Accessibility](#)

## CHANDRA MULTIWAVELENGTH PROJECT. I. FIRST X-RAY SOURCE CATALOG

D.-W. KIM, R. A. CAMERON, J. J. DRAKE, N. R. EVANS, P. FREEMAN, T. J. GAETZ, H. GHOSH, P. J. GREEN, F. R. HARNDEN, JR.,  
M. KAROVSKA, V. KASHYAP, P. W. MAKSYM, P. W. RATZLAFF, E. M. SCHLEGEL, J. D. SILVERMAN,  
H. D. TANANBAUM, A. A. VIKHLININ, AND B. J. WILKES  
Smithsonian Astrophysical Observatory, Cambridge, MA 02138

AND

J. P. GRIMES

Center for Astrophysical Sciences, Johns Hopkins University, Baltimore, MD 21218-2686

Received 2003 January 24; accepted 2003 August 24

### ABSTRACT

The *Chandra* Multiwavelength Project (ChaMP) is a wide-area ( $\sim 14$  deg<sup>2</sup>) survey of serendipitous *Chandra* X-ray sources, aiming to establish fair statistical samples covering a wide range of characteristics (such as absorbed active galactic nuclei, high-*z* clusters of galaxies) at flux levels ( $f_X \sim 10^{-15}$  to  $10^{-14}$  ergs s<sup>-1</sup> cm<sup>-2</sup>) intermediate between the *Chandra* deep surveys and previous missions. We present the first ChaMP catalog, which consists of 991 near on-axis, bright X-ray sources obtained from the initial sample of 62 observations. The data have been uniformly reduced and analyzed with techniques specifically developed for the ChaMP and then validated by visual examination. To assess source reliability and positional uncertainty, we perform a series of simulations and also use *Chandra* data to complement the simulation study. The false source detection rate is found to be as good as or better than expected for a given limiting threshold. On the other hand, the chance of missing a real source is rather complex, depending on the source counts, off-axis distance (or PSF), and background rate. The positional error (95% confidence level) is usually less than 1'' for a bright source, regardless of its off-axis distance, while it can be as large as 4'' for a weak source ( $\sim 20$  counts) at a large off-axis distance ( $D_{\text{off-axis}} > 8'$ ). We have also developed new methods to find spatially extended or temporary variable sources, and those sources are listed in the catalog.

*Subject headings:* surveys — X-rays: general

*On-line material:* color figures, machine-readable tables

### 1. INTRODUCTION

The launch of the *Chandra X-Ray Observatory* has opened a new era in X-ray astronomy. With its unprecedented, subarc-second spatial resolution (van Speybroeck et al. 1997), in conjunction with its high sensitivity and low background, *Chandra* is providing new views of the X-ray sky 10–100 times deeper than previously possible (Weisskopf et al. 2000). Indeed, the cosmic X-ray background, the population of which has long been debated because the necessary spatial resolution was lacking, is now almost ( $\sim 80\%$ ) resolved into discrete sources in deep *Chandra* observations, e.g., the CDF-N (*Chandra* Deep Field-North; Brandt et al. 2001) and the CDF-S (*Chandra* Deep Field-South; Giacconi et al. 2001). Moretti et al. (2003) has recently reported an even higher fraction ( $\sim 90\%$ ). However, the nature of these sources is still somewhat unclear (e.g., Hasinger et al. 1998). An absorbed active galactic nucleus (AGN) population is predicted by population synthesis models (e.g., Comastri et al. 1995; Gilli, Rosati, & Salvati 1999) as the cosmic X-ray background is much harder (a photon index of  $\sim 1.4$ ) than typical AGNs, which have a photon index of  $\sim 1.7$  (e.g., Marshall et al. 1980; Fabian & Barcons 1992). There is some observational evidence supporting the existence of red, absorbed quasars (e.g., Kim & Elvis 1999; Wilkes et al. 2002; White et al. 2003). However, the hard sources in the deep surveys appear to be a mix of various types of narrow- and broad-line AGNs and apparently normal galaxies, with very few of the expected type 2 AGNs seen. The statistical importance of these various source types requires a large sample resulting from a wider area survey such as ChaMP. Additionally,

with two highly successful X-ray observatories currently in orbit (*Chandra* and *XMM-Newton*), we will soon be able to address fundamental questions such as whether the density and luminosity of quasars are evolving in time (e.g., Miyaji et al. 2000; Cowie et al. 2003) and how clusters of galaxies form and evolve (e.g., Rosati et al. 2002a). We will also discover whether rare but important objects have been missing from previous studies (e.g., blank field sources discussed in Cagnoni et al. 2002).

To take full advantage of the rich data set available in the *Chandra* public archive, we have initiated a serendipitous X-ray source survey, the *Chandra* Multiwavelength Project (ChaMP). Because of the high spatial resolution, identification of X-ray sources is far less ambiguous than in previous missions, where many counterparts were often found within typical error circles (at least  $\sim 10$  times larger). Additional information and artificial selection criteria are no longer required, leaving little bias. The ChaMP, although not as deep as the CDF, covers a wide area ( $\sim 14$  deg<sup>2</sup>) and can provide an order of magnitude more sources at intermediate flux levels ( $f_X \sim 10^{-14}$  to  $10^{-15}$  ergs s<sup>-1</sup> cm<sup>-2</sup>) than either the *Chandra* deep surveys or the previous missions (see Fig. 1 and § 2). An additional advantage of a wide area survey is the ability to investigate field-to-field variations of the number density of cosmic (background) sources, which may trace filaments and voids in the underlying large-scale structure, or if not detected, constrain the hierarchical structure formation.

In this paper (Paper I), we describe our data reduction and analysis methods uniquely developed for this project and present the first catalog obtained with an initial sample of 62 *Chandra* observations. In Paper II (Kim et al. 2003), we

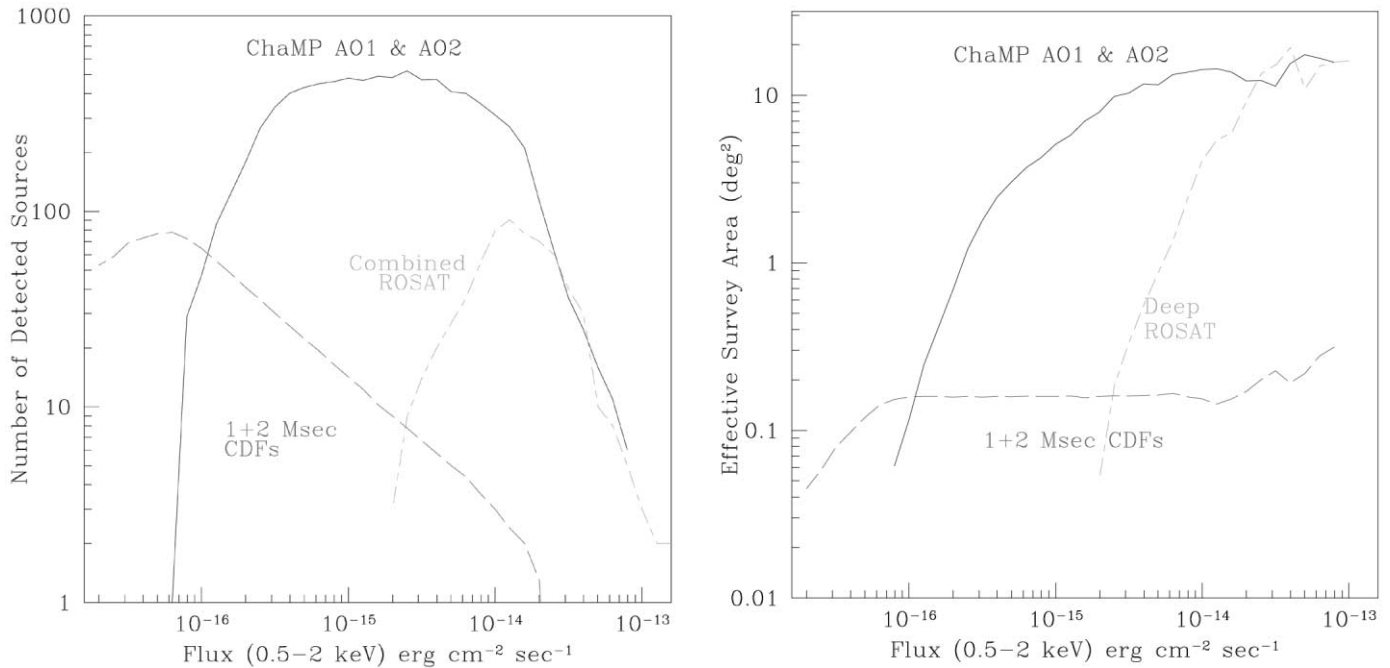


Fig. 1.—ChaMP predicted (a) number of sources and (b) effective sky area. Predictions are determined by simulations for 137 ChaMP fields, based on a deep  $\log N$ – $\log S$ . Also included are analogous simulations for the combined CDFs (2 Ms North and 1 Ms South) and for the *ROSAT* surveys analyzed by Miyaji et al (2000). [See the electronic edition of the *Journal* for a color version of this figure.]

present the results of X-ray source properties by producing the  $\log N$ – $\log S$  relation and X-ray colors, and by comparing with data at other wavelengths. In an accompanying paper (Green et al. 2003), we present the first results of deep optical follow-up observations.

This paper is organized as follows. In § 2, we describe how *Chandra* observations were selected for the ChaMP study. We present in detail the data reduction and analysis techniques in § 3. We have complemented our analysis with an extensive set of simulations in order to quantitatively assess the detection probability (§ 4) and positional accuracy (§ 5), which are both critical to firmly establish statistical properties of X-ray sources. In § 6, we present the first ChaMP X-ray source catalog and describe its contents.

## 2. ChaMP FIELD SELECTION

We have carefully selected *Chandra* fields that are best-suited for ChaMP science. Our selection criteria are often distinct from the purpose for which the observations were originally intended. An ideal field is one for which the PI is interested in a small object in the center of the field, providing the largest sky area available for a sensitive survey. The ChaMP would then assemble sources from the large unstudied area outside the main target to be processed and analyzed uniformly. Optical images and spectra are then added to create a wide field multiwavelength survey. A number of criteria were used in constructing the survey area:

1. Only fields more than  $20^\circ$  from the Galactic plane were selected in order to keep the Galactic extinction low. The latitude limit corresponds to  $N(\text{H}) < 6 \times 10^{20} \text{ cm}^{-2}$ , or  $E(B-V) < 0.1 \text{ mag}$ .

2. Only ACIS imaging (i.e., no grating) fields were used; HRC images were omitted. Fields with instrumental complications (e.g., a bias map missing in telemetry or corrupted, energy filtering, or spatial windows) were omitted, as were fields using subarrays or continuous clocking.

3. Fields dominated by large extended sources (covering more than 10% of field of view) in either the optical or X-ray were omitted because these would mask faint sources. The extended source area is determined by the contour where the signal falls to 2 times the background (in case of *ROSAT* images) or to  $10\sigma$  above the background (in case of POSS). RASS data were used where *ROSAT* pointed images were not available. Supernova remnants were automatically omitted. In addition, to ensure that the field of view would not be heavily contaminated by galaxies belonging to a cluster, we also exclude fields containing clusters with  $z < 0.3$  (1 Mpc at  $z = 0.3$  corresponds to  $3'$ ).

4. Planetary observations were omitted.

5. Observations closer than  $10.8^\circ$  from the center of the LMC,  $5.3^\circ$  from the SMC, and  $3.2^\circ$  from M31 were omitted.

6. Fields intended by the PI for surveys were omitted. These include ELAIS: N1.1 and ELAIS N1.2, the *Chandra* CDF-N and CDF-S, Lockman Hole, and MBM12.

Based on these selection criteria, 137 fields were selected among *Chandra* AO1 and AO2 observing periods. Of these, 62 ACIS observations, which are available to us either through the public archive or by PI's preapproval, have been processed and presented in this paper. They consist of 21 ACIS-I and 41 ACIS-S observations based on whether the aim point falls on I3 (or CCD ID = 3) or S3 (or CCD ID = 7), respectively (see Fig. 6.1 in *Chandra* Proposer's Observatory Guide 2000 [POG]). In Table 1, we list the basic observational parameters of the selected *Chandra* observations including observation dates, the aim points (R.A., decl.), CCD chips used, and effective exposure times. The effective exposure time was estimated after removing background flares within the main chip where the aim point lies (see § 3.1).

We estimate the number of sources likely to be detected in the full ChaMP by assuming the combined 0.5–2 keV  $\log N$ – $\log S$  from the CDF-S 1 Ms ACIS-I and *ROSAT* PSPC Lockman Hole 207 ks results (Rosati et al. 2002b and

Hasinger et al. 1998, respectively) and applying this to each *Chandra* image in our full survey (see Green et al. 2002). We simulate the number of sources that would be detected in a given *Chandra* image by randomly populating the CCDs with sources derived from the  $\log N - \log S$ , assuming an average spectral slope  $\Gamma_{\text{ph}} = 1.4$ . When the full ChaMP sample is complete, we thereby predict  $\sim 6000$  X-ray detections. The number of predicted detections as a function of soft X-ray flux is shown in Figure 1 for the full ChaMP sample, the deep *ROSAT* sample (Lockman Hole; Hasinger et al. 1998), and the combined CDFs (2 Ms CDF-N and 1 Ms CDF-S). Also shown in Figure 1 is the estimated sky area sensitive to a given flux limit. It is clear that the full ChaMP provides unprecedented coverage in the intermediate flux regime.

### 3. X-RAY DATA ANALYSIS

#### 3.1. Data Correction and Data Screening

We have developed a ChaMP-specific pipeline (called XPIPE) to uniformly reduce the *Chandra* data and to generate homogeneous data products. XPIPE was built mainly with CIAO (ver. 2.3) tools.<sup>1</sup> An example of XPIPE products is seen in Figure 2. Level 2 data products generated by the *Chandra* X-Ray Center (CXC) standard data processing are taken as an input and further processed by XPIPE for additional data correction and data screening. As CXC has reprocessed old data observed early in the mission with more reliable software and calibration data,<sup>2</sup> we use revision 2 (or higher) data products whenever available. Standard data screening applied in the CXC pipeline processing excludes events with *ASCA* grades 1, 5, and 7 (which are mostly cosmic-ray events) and events with status bits set to nonzero. Screening by the status bit excludes bad pixels and columns among many other instrumental effects. A full description of ACIS status bit can be found at the CXC Web site.<sup>3</sup> In some cases, however, bad pixels and columns that are not listed in the calibration database (and hence not excluded in CXC processing) are still visible, particularly in the data taken at an ACIS temperature of  $-110^\circ\text{C}$  or  $-100^\circ\text{C}$  (observed earlier than 2000 January; marked in Table 1) and in the S4 chip (CCD ID = 8). An example of bad columns is shown in Figure 3a, where a series of false sources along a CCD column is clearly seen near the bottom of the figure. We checked each image by plotting in chip coordinates for which the bad column is not blurred by the dither (see § 3.5). In some observations, a finite number of bias values are corrupted, and they are slightly lower for a given node in a given CCD. Since they are repeatedly subtracted in each exposure frame, the pixels with corrupted bias values appear to be hot pixels dithered with an aspect Lissajous pattern. In this case, several sources are spuriously detected at the corners of the Lissajous pattern of a single bad pixel (see Fig. 3b). They are identified by eye, and those false sources are flagged in the ChaMP database (see § 3.5). Some CXC data have been processed with outdated calibration data, such as the ACIS gain file used to produce PI/energy columns and the alignment file used to determine absolute positions. We reapply new, updated calibration files whenever necessary.

Cosmic rays or charged particles sometimes leave residual charges in CCD pixels, and they are repeatedly identified as a

valid event in the same CCD pixels. This effect, known as afterglow, was first noticed by discovering very sharp point-like sources at large off-axis angles. To correct this, CXC has added a new tool to the pipeline processing (2000 August in CXCDS release R4CU5UPD8). The CXC and the ACIS Instrument team<sup>4</sup> note a side effect of this correction—the algorithm may remove real events up to a few percent, particularly for a bright source. Since this side effect mostly affects very bright sources, it will not alter results of source detection. In the ChaMP, we apply this correction so that any false source should be excluded. As the investigation of the effect of afterglow continues, if it is necessary to counter-correct events from bright sources, we will do so.

It is also known that the charge cascades (also called “blooms”) caused by interacting with cosmic rays effectively reduce the detector efficiency by as much as a few percent.<sup>5</sup> As the effects of the blooms and the workaround are being investigated, we will correct this effect, if necessary, when it is better understood.

The S4 chip (or CCD ID = 8) is known to suffer from an instrumental effect called streaking. This can be corrected by applying a destreaking tool provided by John Houck (also available in the CIAO package). Figure 4 illustrates the pronounced difference before and after the destreaking correction. While the correction works in most cases, during our visual inspection (§ 3.5), we recognized that streaking is not fully corrected in every case and that bad columns perhaps mixed with the streaking problem appear in a few observations. Therefore, we do not use the sources detected in the S4 chip for further analyses in this paper.

The ACIS background is known to vary significantly.<sup>6</sup> The count rate can increase by a factor of up to 100 within a single observation. Background flares are more prominent in back-illuminated chips (S3 and S1) than front-illuminated chips. Typical examples of background light curves for a BI and an FI chip are shown in Figure 5. The origin of background flares is not known (e.g., Grant, Bautz, & Virani 2002); low-energy ( $< 100$  keV) protons may be responsible (Struder et al. 2001). Because the source detection probability strongly depends on the background rate (§ 4), we do not use the data obtained during background flares. After making a background light curve, we exclude those time intervals beyond a  $3\sigma$  fluctuation above the mean background count rate. The mean rate is determined iteratively after excluding the high background intervals. Given different characteristics between BI and FI chips, it is applied per ACIS CCD. The GTI (good time interval) extension table is then updated accordingly so that the same CIAO tools can be applied with and without data screening by the background rate. Figure 6 shows a histogram of effective exposure times for BI and FI chips after data screening by the high background rate for the 62 observations reported here. While the loss is minimal for FI chips, it can be as large as 50% for BI chips. Among the 62 observations, the average effective exposure time was reduced by 18% in BI and 5% in FI chips.

#### 3.2. Source Detection—*wavdetect*

To detect X-ray sources, we apply a wavelet detection algorithm, called *wavdetect*, available in the CIAO software package (Freeman et al. 2002). Because *wavdetect* is more reliable in finding individual sources in crowded fields and in

<sup>1</sup> See <http://cxc.harvard.edu/ciao>.

<sup>2</sup> See <http://cxc.harvard.edu/cdo/reprocessing.html>.

<sup>3</sup> See <http://cxc.harvard.edu>.

<sup>4</sup> See <http://www.astro.psu.edu/xray/acis>.

<sup>5</sup> See <http://asc.harvard.edu/ciao/caveats>.

<sup>6</sup> See [http://cxc.harvard.edu/cal/Acis/Cal\\_prods/bkgnd/current/index.html](http://cxc.harvard.edu/cal/Acis/Cal_prods/bkgnd/current/index.html).

TABLE 1  
LIST OF *Chandra* FIELDS USED IN THIS PAPER

Obs. ID	Sequence Number	Target	R.A. (J2000)	Decl. (J2000)	$N_{\text{H}}$ ( $10^{20} \text{ cm}^{-2}$ )	Observation Date	Exposure (ks)	Aim Point Detector	CCD Used
520.....	800028	MS 0015.9+1609	0 18 32.7	+16 30 4.0	4.06	2000 Aug 18	60.99	ACIS-I	01236
2242.....	900069	GSGP 4X:048	0 57 17.9	-27 22 23.8	1.69	2000 Dec 18	6.66	ACIS-S	235678
2244.....	900071	GSGP 4X:069	0 57 38.9	-27 33 30.0	1.62	2000 Oct 30	6.86	ACIS-S	235678
2245.....	900072	GSGP 4X:082	0 57 51.9	-27 23 30.6	1.43	2000 Oct 30	6.52	ACIS-S	235678
2247.....	900074	GSGP 4X:109	0 58 26.4	-27 29 51.0	1.37	2000 Nov 07	10.88	ACIS-S	235678
2248.....	900075	GSGP 4X:114	0 58 38.3	-27 49 17.5	1.55	2000 Nov 08	10.11	ACIS-S	235678
521.....	800029	Cl 0107+31	1 2 5.2	+31 47 54.7	5.49	1999 Oct 23 <sup>a</sup>	46.87	ACIS-I	01237
342.....	700014	NGC 526A	1 23 53.6	-35 4 33.5	2.09	2000 Feb 07	5.78	ACIS-S	235678
913.....	800089	Cl J0152.7-1357	1 52 49.3	-13 56 19.1	1.61	2000 Sep 08	34.81	ACIS-I	012367
1642.....	700258	HE 0230-2130	2 32 35.7	-21 17 12.2	2.27	2000 Oct 14	8.35	ACIS-S	123678
525.....	800033	MS 0302.7+1658	3 5 28.3	+17 13 20.6	10.95	2000 Oct 03	8.95	ACIS-I	01236
796.....	600099	SBS 0335-052	3 37 44.5	-5 2 19.4	4.98	2000 Sep 07	46.81	ACIS-I	012367
624.....	200049	LP 944-20	3 39 36.8	-35 26 21.2	1.44	1999 Dec 15 <sup>a</sup>	40.94	ACIS-S	23678
902.....	800078	MS 0451.6-0305	4 54 12.9	-2 58 52.4	5.18	2000 Oct 08	41.53	ACIS-S	235678
346.....	700018	Pictor A	5 19 45.6	-45 46 29.3	4.12	2000 Jan 18 <sup>a</sup>	25.44	ACIS-S	23678
914.....	800090	Cl J0542.8-4100	5 42 49.0	-40 58 48.4	3.59	2000 Jul 26	48.72	ACIS-I	01236
377.....	700049	B2 0738+313	7 41 11.9	+31 12 35.8	4.18	2000 Oct 10	26.91	ACIS-S	235678
838.....	700143	3C 200	8 27 26.8	+29 19 19.9	3.69	2000 Oct 06	10.07	ACIS-S	235678
1643.....	700259	APM 08279+5255	8 31 43.9	+52 45 48.7	3.91	2000 Oct 11	6.87	ACIS-S	123678
2130.....	700320	3C 207	8 40 49.2	+13 12 57.0	4.14	2000 Nov 04	22.90	ACIS-S	235678
1708.....	800103	Cl 0848.6+4453	8 48 54.7	+44 54 33.3	2.73	2000 May 03	59.39	ACIS-I	012367
927.....	800103	Cl 0848.6+4453	8 48 54.8	+44 54 32.9	2.73	2000 May 04	122.18	ACIS-I	012367
1596.....	700212	0902+343	9 5 32.8	+34 9 7.9	2.28	2000 Oct 26	9.68	ACIS-S	235678
2227.....	800166	RX J0910+5422	9 10 39.7	+54 19 54.8	1.98	2001 Apr 29	104.25	ACIS-I	01236
419.....	700091	RX J0911.4+0551	9 11 26.8	+5 50 57.3	3.70	1999 Nov 02 <sup>a</sup>	24.55	ACIS-S	01237
1629.....	700245	RX J0911.4+0551	9 11 28.7	+5 51 25.9	3.70	2000 Oct 29	9.13	ACIS-S	123678
839.....	700144	3C 220.1	9 32 35.0	+79 7 10.8	1.90	1999 Dec 29 <sup>a</sup>	17.14	ACIS-S	23678
805.....	600108	I Zw 18	9 33 56.5	+55 14 37.7	1.99	2000 Feb 08	24.49	ACIS-S	235678
926.....	800102	MS 1008.1-1224	10 10 14.7	-12 41 4.9	6.74	2000 Jun 11	43.87	ACIS-I	012367
512.....	800020	EMSS 1054.5-0321	10 56 55.8	-3 39 20.3	3.67	2000 Apr 21	75.60	ACIS-S	123678
915.....	800091	Cl J1113.1-2615	11 12 54.1	-26 15 41.2	5.52	2000 Aug 13	101.35	ACIS-I	012367
363.....	700035	PG 1115+080	11 18 15.1	+7 45 16.0	4.01	2000 Jun 02	24.42	ACIS-S	123678
1630.....	700246	PG 1115+080	11 18 18.5	+7 46 29.8	4.01	2000 Nov 03	9.73	ACIS-S	123678
868.....	700173	PG 1115+407	11 18 42.8	+40 25 17.6	1.91	2000 Oct 03	17.37	ACIS-I	012367
2126.....	700316	3C 263	11 40 5.2	+65 47 59.7	1.15	2000 Oct 28	29.15	ACIS-S	235678
898.....	800074	B1138-262	11 40 46.1	-26 30 20.9	4.96	2000 Jun 06	23.50	ACIS-S	235678
536.....	800044	MS 1137.5+6625	11 40 47.1	+66 7 19.7	1.18	1999 Sep 30 <sup>a</sup>	114.61	ACIS-I	012367
1712.....	790054	3C 273	12 29 6.3	+2 3 14.0	1.79	2000 Jun 14	12.04	ACIS-S	456789
325.....	800063	S-Z Cluster	13 12 22.4	+42 41 42.8	1.37	1999 Dec 03 <sup>a</sup>	80.61	ACIS-S	23678
2228.....	800167	RX J1317.4+2911	13 17 12.2	+29 10 18.3	1.04	2001 May 04	108.09	ACIS-I	01236
809.....	700114	Mrk 273X	13 44 43.0	+55 54 16.4	1.09	2000 Apr 19	40.93	ACIS-S	012367
507.....	800015	RX J1347-114	13 47 28.7	-11 46 24.2	4.88	2000 Apr 29	9.90	ACIS-S	235678
1588.....	700204	3C 294	14 6 50.4	+34 11 20.0	1.21	2000 Oct 29	19.02	ACIS-S	235678
578.....	890023	3C 295	14 11 11.5	+52 13 1.6	1.34	1999 Aug 30 <sup>a</sup>	15.80	ACIS-S	235678
930.....	800106	H1413+117	14 15 43.9	+11 30 0.1	1.80	2000 Apr 19	24.09	ACIS-S	456789
541.....	800049	V1416+4446	14 16 43.0	+44 48 28.5	1.24	1999 Dec 02 <sup>a</sup>	29.67	ACIS-I	01236
907.....	800083	QB 1429-008A, B	14 32 29.5	-1 5 58.4	3.54	2000 Mar 31	21.32	ACIS-I	01236
869.....	700174	Arp 220	15 34 54.7	+23 29 52.5	4.29	2000 Jun 24	54.18	ACIS-S	235678
326.....	800064	3C 324	15 49 46.3	+21 25 19.3	4.31	2000 Jun 25	31.95	ACIS-S	235678
546.....	800054	MS 1621.5+2640	16 23 25.4	+26 36 12.4	3.59	2000 Apr 24	29.57	ACIS-I	01236
615.....	200040	VB 8	16 55 34.0	-8 24 7.6	13.39	2000 Jul 10	8.54	ACIS-S	456789
548.....	800056	RX J1716.9+6708	17 17 1.0	+67 11 44.1	3.71	2000 Feb 27	50.35	ACIS-I	01236
841.....	700146	3C 371	18 6 52.3	+69 50 5.5	4.84	2000 Mar 21	9.43	ACIS-S	456789
830.....	700135	Jet of 3C 390.3	18 41 46.8	+79 48 21.2	4.16	2000 Apr 17	22.71	ACIS-S	235678
551.....	800059	MS 2053.7-0449	20 56 18.6	-4 34 32.3	4.96	2000 May 13	42.34	ACIS-I	01236
928.....	800104	MS 2137.3-2353	21 40 14.8	-23 40 22.0	3.57	1999 Nov 18 <sup>a</sup>	29.09	ACIS-S	23678
1644.....	700260	HE 2149-2745	21 52 7.8	-27 32 28.2	2.33	2000 Nov 18	9.18	ACIS-S	123678
1479.....	980429	Leonid Anti-radiant	22 13 12.7	-22 10 43.4	2.49	1999 Nov 17 <sup>a</sup>	20.02	ACIS-I	01236

TABLE 1—*Continued*

Obs. ID	Sequence Number	Target	R.A. (J2000)	Decl. (J2000)	$N_{\text{H}}$ ( $10^{20} \text{ cm}^{-2}$ )	Observation Date	Exposure (ks)	Aim Point Detector	CCD Used
789.....	600092	HCG 92	22 35 58.5	+33 59 31.4	7.74	2000 Jul 09	19.60	ACIS-S	235678
431.....	700103	<i>Einstein</i> Cross	22 40 27.9	+3 21 19.2	5.34	2000 Sep 06	21.89	ACIS-S	123678
918.....	800094	C1 J2302.8+0844	23 2 47.4	+8 45 14.7	5.05	2000 Aug 05	106.09	ACIS-I	012367
861.....	700166	Q2345+007	23 48 18.1	+0 58 36.4	3.81	2000 Jun 27	65.00	ACIS-S	123678

NOTES.—CCD ID = 0–3 for ACIS-I and 4–9 for ACIS-S (*Chandra* POG 2000);  $N_{\text{H}}$  from Stark et al. 1992. Units of right ascension are hours, minutes, and seconds, and units of declination are degrees, arcminutes, and arcseconds.

<sup>a</sup> CCD temperature  $> -120^{\circ}$ .

identifying extended sources than the traditional `celldetect` algorithm, we have selected `wavdetect` as the main detection tool in the ChaMP. We run `wavdetect` repeatedly in three energy bands (*B*, *S*, and *H*—see Table 2) to quantify detections and upper limits in each subenergy band. After performing various tests to find the most efficient parameters used with `wavdetect`, we select a significance threshold parameter of  $10^{-6}$ , which corresponds to one possibly spurious pixel in one CCD (see § 4.1 for more discussion of this type I error) and a scale parameter of seven steps between 1 and 64 pixels (1 pixel =  $0''.492$ ) to cover a wide range of source sizes, accommodating extended sources and the variation of the PSF as a function of off-axis distance ( $D_{\text{off-axis}}$ ). For the remaining

parameters, we used the default values given in CIAO (see § 4 for more discussion of `wavdetect` performance). To avoid finding spurious sources, most often located at the edge of the field of view, we used an exposure map generated for each CCD at an energy of 1.5 keV with an appropriate aspect histogram<sup>7</sup> and required a minimum of 10% of the on-axis exposure.

As shown in Figure 2, `wavdetect` performs well in identifying both point sources and extended sources (e.g., an extended source toward the lower left corner of this figure). It also works nicely in finding multiple sources overlapping

<sup>7</sup> See [http://cxc.harvard.edu/ciao/threads/expmap\\_acis\\_single](http://cxc.harvard.edu/ciao/threads/expmap_acis_single).

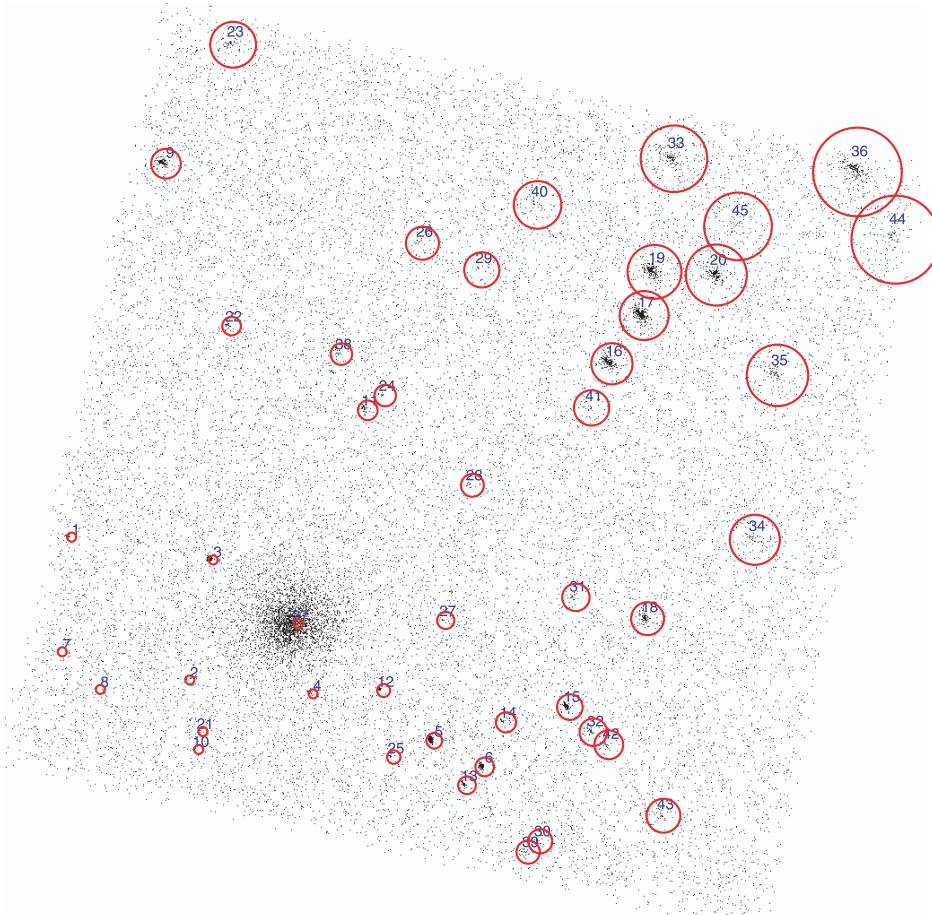


FIG. 2.—Example XPIPE output image. A circle indicates an X-ray source detected by `wavdetect` and its radius is proportional to the PSF size at the off-axis distance for a given source. A total of 45 sources are detected, including one extended source (a target source in this observation) and a few overlapping sources.

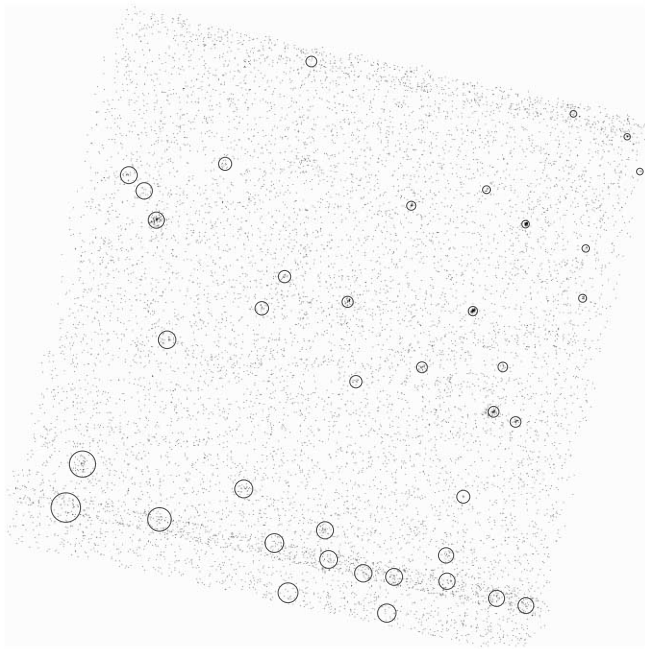


FIG. 3a

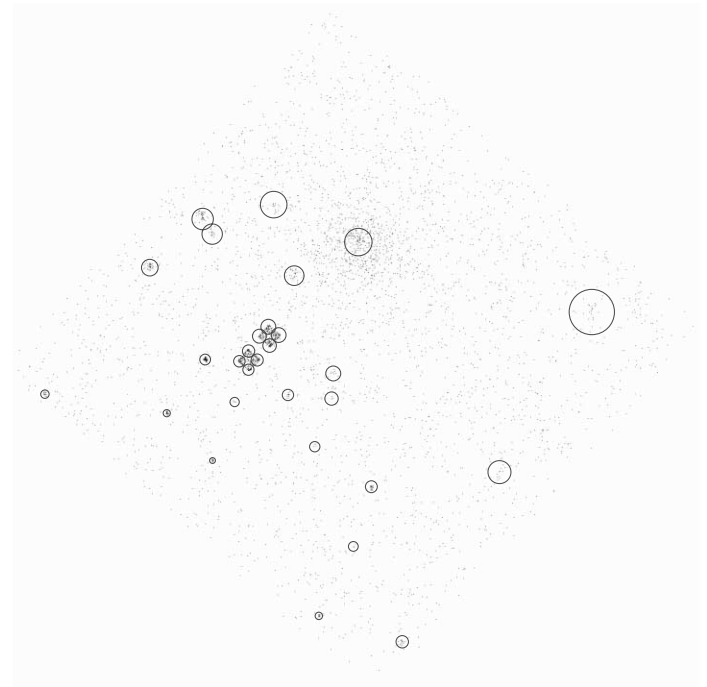


FIG. 3b

FIG. 3.—Examples of (a) a bad column and (b) a hot pixel in sky coordinates. (a) Series of false sources are detected along the bad column. (b) Two hot pixels are seen in a Lissajous pattern (near the center) and four false sources each are detected. In ChaMP data processing, the presence of unfiltered bad columns and bad pixels is checked by visual examination of images in chip coordinates. [See the electronic edition of the *Journal* for a color version of this figure.]

within their source radii (e.g., sources 30 and 33, 32, and 42 in Fig. 2—see § 3.3 on their photometry). One known exception (not specific to *wavdetect*) is a problem due to the PSF shape, which is not circularly symmetric. On a rare occasion, a pair of spurious sources may be detected at the location of a single

source when the source is far enough off-axis and bright enough to manifest the PSF shape. Figure 7 illustrates this effect—an observed image (*left panel*) of a double-peaked source with  $\sim 2000$  counts at an off-axis distance of  $6'$  is compared with a single PSF image generated (*right panel*) at

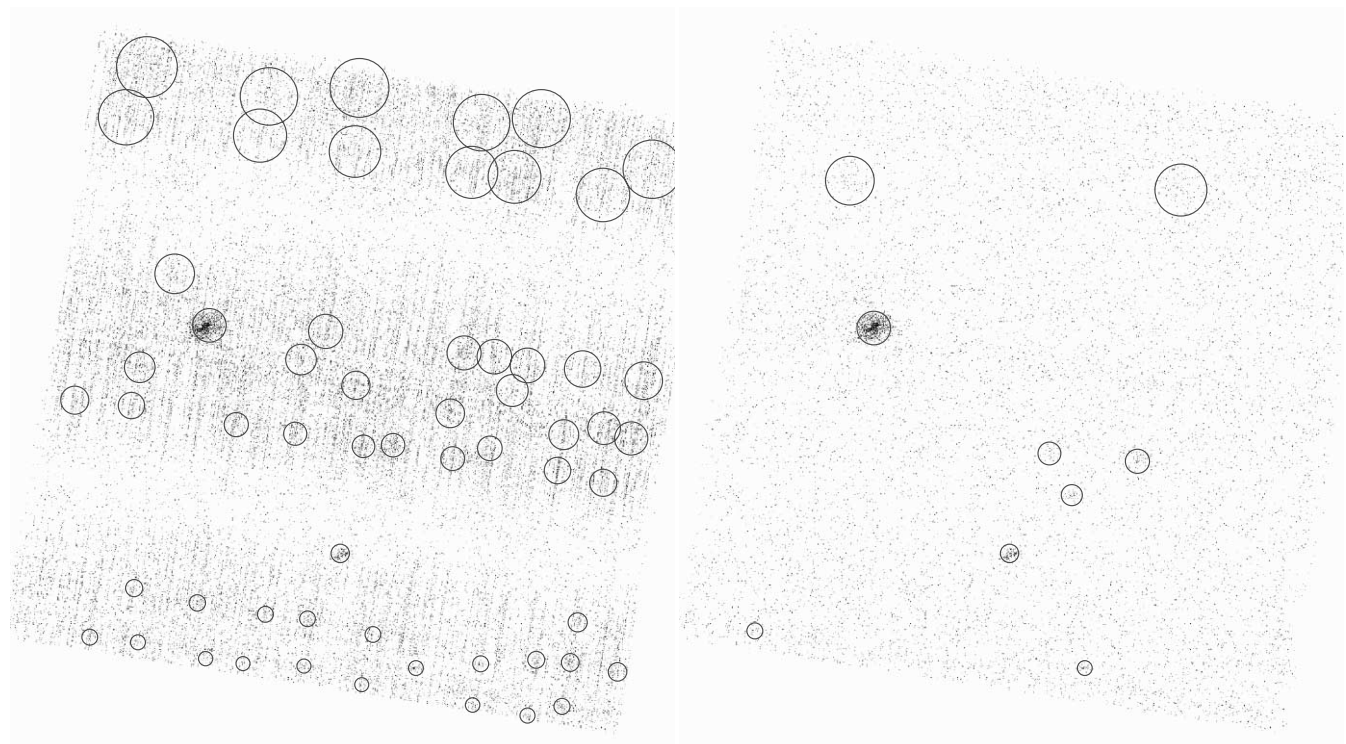


FIG. 4.—Sample image on S4 chip (CCD ID = 8) before (*left*) and after (*right*) the destreaking correction. [See the electronic edition of the *Journal* for a color version of this figure.]

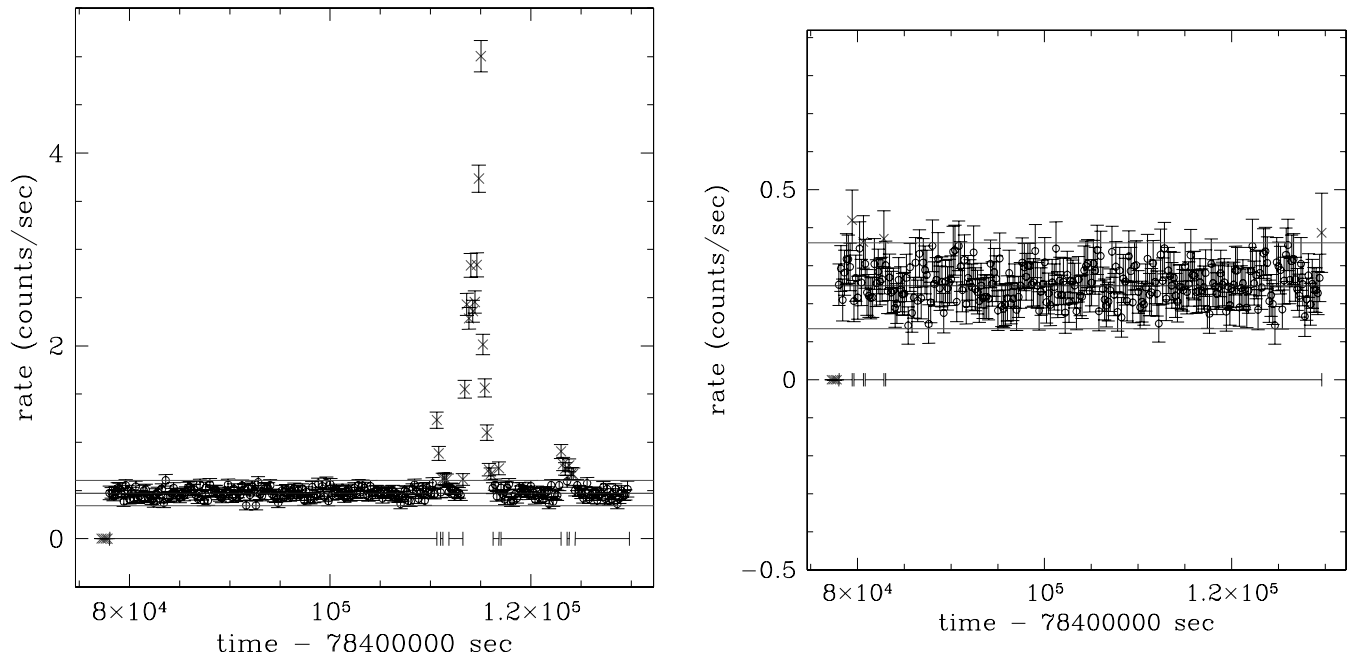


FIG. 5.—Comparison of background light curves of (a) BI S3 (ObsID = 00861, OBI = 001, CCD ID = 7) chip and (b) FI S2 (ObsID = 00861, OBI = 001, CCD ID = 6) chip. Note that they were made from the same observation. Time intervals during which the background rate is high (beyond  $3\sigma$ ) are marked by a cross. [See the electronic edition of the Journal for a color version of this figure.]

the source location. In this case, two sources are detected by *wavdetect*,  $1''.6$  apart. Also plotted in Figure 7 is a Richardson-Lucy deconvolved image (*bottom left panel*) confirming that this is really a single source. To identify this PSF effect, we have inspected source pairs with small separation. We have found three pairs of sources affected. The correct positions were redetermined by the PSF deconvolution, and the extra sources were flagged (flag = 015 in Table 3) in the database to exclude false sources in any further analysis.

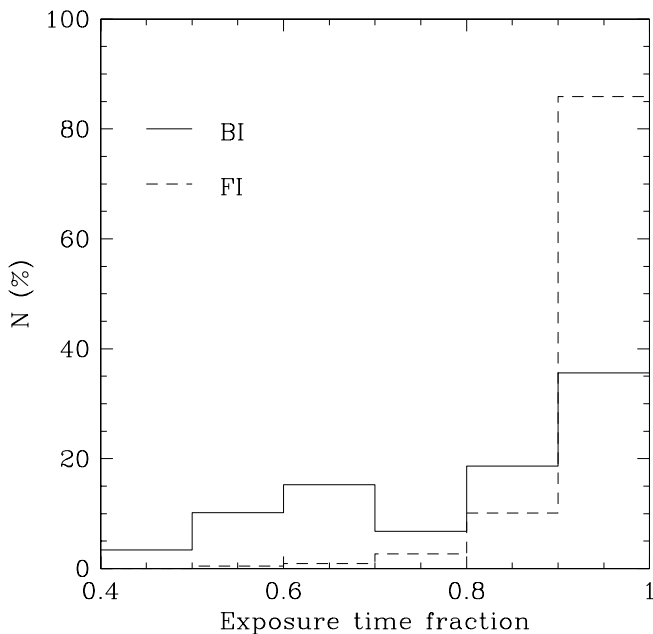


FIG. 6.—Histogram of the effective exposure times for BI and FI chips. Background flares significantly reduce the effective exposure time in the BI chip.

The *wavdetect* algorithm also provides source information such as a source count rate and size, but they may not be reliable, particularly when there is a nearby (extended) source. We rely on *wavdetect* results only for positions of detected sources (see § 5 for more discussions about the positional error) and determine source properties independently as described in § 3.3.

### 3.3. Determination of Source Properties

Source counts were extracted within a circle centered on the *wavdetect*-determined source position and background counts are extracted locally in an annulus surrounding the source. We choose the source extraction radius to be a 95% encircled energy radius (at 1.5 keV) as a function of off-axis angle (determined from the “psfsize” table, psfsize\_2000830.fits, available in the CIAO and CALDB public distribution) with a minimum of  $3''$  near the aim point and a maximum of  $40''$  at the far edge of the field of view. Similarly, the background was estimated for each source in an annulus from 2 to 5 times source radius. When nearby sources exist within the background region, they are excluded before measuring the background count. Net count rates are then calculated with the effective exposure (including vignetting) for both the source and background regions. Errors are derived following Gehrels (1986).

When the source extraction regions of nearby sources overlap, their source count rates will be overestimated. Note that they are flagged in the database (see Table 3). To correct this, we have applied two independent methods. The first method calculates the source counts from a pie-sector, which excludes a nearby source region and then rescales it based on the area ratio of the chosen pie to the full disk. Once the correction factor is determined, the same factor can be applied to correct counts in all energy bands. The second method is to fit a two-dimensional image with two (or more) PSFs generated at the source position. The advantage of the second



TABLE 2  
ENERGY BANDS AND DEFINITION OF X-RAY COLORS

Band	Definition
Energy Band Selection	
Broad ( $B$ ) .....	0.3–8.0 keV
Hard ( $H$ ) .....	2.5–8.0 keV
Soft ( $S$ ).....	0.3–2.5 keV
Soft1 ( $S_1$ ).....	0.3–0.9 keV
Soft2 ( $S_2$ ).....	0.9–2.5 keV
Hardness Ratio and X-Ray Colors	
HR.....	$(H-S)/(H+S)$
C21.....	$-\log(S_2) + \log(S_1) = \log(S_1/S_2)$
C32.....	$-\log(H) + \log(S_2) = \log(S_2/H)$
Additional Energy Bands	
Conventional soft ( $S_C$ ).....	0.5–2.0 keV
Conventional hard ( $H_C$ ).....	2.0–8.0 keV

method is to use all the photons to maintain the highest statistics. Its disadvantages, however, are (1) the two-dimensional fitting is less reliable when sources are faint, and (2) the whole task (generating a PSF and fitting) must be done in each energy band. The source counts corrected by the first method are used in this paper.

The energy range used in this study is between 0.3 and 8 keV. The upper limit was selected to reduce background events while still including hard X-rays that could lead to

interesting sources (such as heavily absorbed AGNs), because background particles dominate and the HRMA (High Resolution Mirror Assembly) effective area steeply decreases at energies higher than 8 keV (van Speybroeck et al. 1997). We have divided the counts into three energy bands (see Table 2) in order to construct two X-ray colors. The energy boundaries were selected (1) to optimize photon statistics by distributing a comparable number of photons to each band, but the largest number of photons to the middle band ( $S_2$ ),

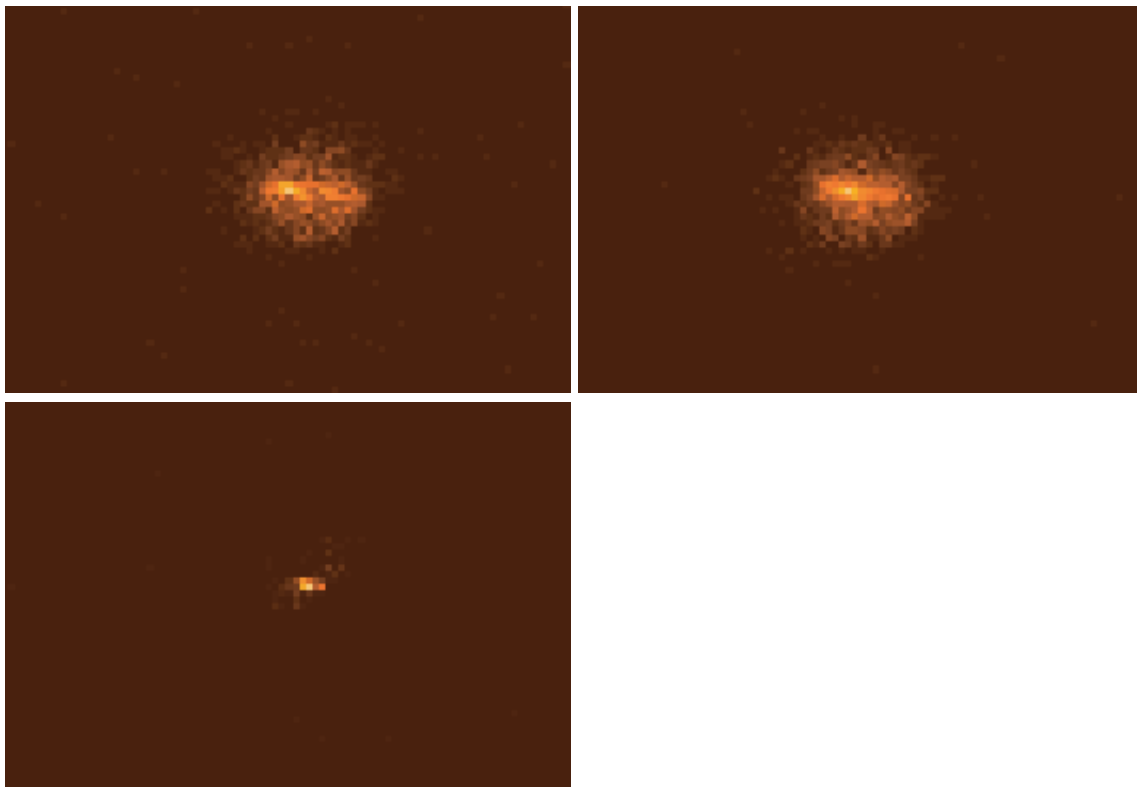


FIG. 7.—Double-peaked sources due to the PSF. The top left panel is the observed image of a single source with  $\sim 2000$  counts at  $D_{\text{off-axis}} = 6'$  and the top right panel is the PSF image generated at the source location. In this case, two sources are detected by *wavdetect*,  $1''.6$  apart. The bottom left panel clearly shows a single source after applying the Richardson-Lucy deconvolution.

TABLE 3  
SOURCE FLAGS

Flag	Definition
False X-Ray Sources	
011.....	False source by a hot pixel or by a bad bias value (Fig. 3 <i>b</i> )
012.....	False source by a bad column (Fig. 3 <i>a</i> )
013.....	False source along the readout direction of a very strong source
014.....	False source by the FEP 0/3 problem ( <a href="http://cxc.harvard.edu/ciao/caveats">http://cxc.harvard.edu/ciao/caveats</a> )
015.....	Double sources detected by the PSF effect (Fig. 7)
X-Ray Sources—Questionable	
021.....	Visual inspections found it as a spurious source
Valid Sources, but Source Properties May Be Subject to a Large Uncertainty	
031 <sup>a</sup> .....	Bad pixel/column exists within source extraction radius
032 <sup>a</sup> .....	Nearby source exists within the source extraction circle
033 <sup>a</sup> .....	Nearby source exists within the background extraction annulus
034 <sup>a</sup> .....	Source is found near an extended source
035 <sup>a</sup> .....	Background region overlaps with a nearby extended source
036 <sup>a</sup> .....	Source near the edge of the chip
037.....	Pile-up (see <i>Chandra</i> POG 2000)
038.....	Uncertain source position by flag = 015 (Fig. 7)
Other Cases	
051 <sup>a</sup> .....	Source is extended
052.....	Same source in multiple observations
053 <sup>a</sup> .....	Target of observation
054.....	X-ray jet
055 <sup>a</sup> .....	Variable source

<sup>a</sup> Flagged by the automatic pipeline.

which is used in both X-ray colors; (2) to directly compare with previous *ROSAT* results (<2.5 keV); and (3) to confine most soft X-ray lines seen in soft X-ray sources (e.g., stellar sources) to a single band,  $S_1$  (<0.9 keV). With the three energy bands, we define two X-ray colors, following the same convention as in optical colors such that higher numbers are redder/softer. They are also consistent with X-ray colors defined in earlier studies with the *Einstein* X-ray data (e.g., Kim, Fabbiano, & Trinchieri 1992). We note that the sense is opposite to a hardness ratio in which higher numbers are harder (e.g., Green et al. 2003). The main advantage of this selection of X-ray colors is to isolate two spectral parameters, intrinsic hardness and absorption, so that one X-ray color mostly represents absorption and another color a spectral slope (if  $N_H \lesssim 10^{22}$  cm<sup>-2</sup>). We describe the average X-ray colors in our sample in Paper II. Finally, to the ChaMP catalog, we have added two more commonly used energy bands (0.5–2.0 keV) and (2.0–8.0 keV) to provide users with flexibility and allow them to directly compare with other results.

Source fluxes are determined by calculating the energy conversion factor (ECF—actually count rate to flux conversion factor) for each observation (and each chip), because the quantum efficiency (QE) of ACIS CCDs varies with time and the Galactic value of  $N_H$  varies from one pointing to another. To calculate ECFs, we assume a power-law emission model of  $\Gamma_{\text{ph}} = 1.7$  and 1.4 with absorption by Galactic  $N_H$  determined for each observation (Stark et al. 1992). Those parameters were selected to be consistent with other results (e.g., Hasinger et al. 1993; Brandt et al. 2001) for direct comparison (e.g.,  $\Gamma_{\text{ph}} = 1.7$  for the soft band and  $\Gamma_{\text{ph}} = 1.4$

for the hard band, as used in Paper II). The QE degradation<sup>8</sup> is most significant at energies below 1 keV (or in the *S* band). To correct the time-dependent QE degradation per observation, we have used *Sherpa*, available in CIAO version 2.3 (see footnote 1) in conjunction with *corrarf*.<sup>9</sup> We note that the *S*-band ECF varies by about 20% (for about 20 months spanning our sample) as a result of the QE degradation, while the *H*-band ECF remains almost constant. However, for extremely soft sources (such as supersoft sources, e.g., in Di Stefano & Kong 2003), the correction could be even higher.

### 3.3.1. Source Extent

To identify an extended source and measure the source extent, we have generated radial profiles of individual sources and fitted them with a Gaussian profile and a  $\beta$  model. Because the X-ray background rapidly increases with increasing energy, we have used *S*-band images for this purpose. We then compared the measured Gaussian  $\sigma$  and core radius with the PSF size at a given off-axis distance. We initially identified extended sources with  $\sigma(\text{arcsec}) > 1.5 \times 90\%$  EE radius (the limit was empirically selected after several iterations of trial and error). Then an individual source is rechecked for its extendedness (see § 3.5). This method works for most extended sources. However, it is difficult to determine extent for a faint source falling at a large off-axis distance and to model PSFs appropriate for sources at large off-axis angles by the

<sup>8</sup> See CXC Memo on 2002 July 29 ([http://cxc.harvard.edu/cal/Acis/Cal\\_prods/qeDeg/index.html](http://cxc.harvard.edu/cal/Acis/Cal_prods/qeDeg/index.html)).

<sup>9</sup> Available at [http://cxc.harvard.edu/cal/Acis/Cal\\_prods/qeDeg/corrarf.tar.gz](http://cxc.harvard.edu/cal/Acis/Cal_prods/qeDeg/corrarf.tar.gz).

simple Gaussian function we have applied. We have, therefore, limited our method to four CCDs (CCD ID = 0–3) in ACIS-I observations and  $D_{\text{off-axis}} < 10'$  in ACIS-S observations. Once a source is identified as extended, we then recalculate its counts and flux, based on its size. Among the sources (3177 sources; see § 6) found in CCD ID = 0–3 in ACIS-I and CCD ID = 6–7 in ACIS-S observations, we have identified 21 extended (nontarget) sources with Gaussian  $\sigma$  ranging from a few to  $12''$ . In the first ChaMP catalog (991 sources; see § 6), we have four extended sources (flag = 051 in Table 7).

We note that the detection probability of extended sources is more complex than that of point sources (in § 4) and strongly depends on the background level as well as the source properties such as their flux and size. We will present a full simulation analysis for the extended source selection and completeness in a subsequent paper.

### 3.3.2. Variability Analysis

An investigation of the variability of sources detected in a survey such as ChaMP is complicated by the large ranges in observed source count rates and in the exposure times of the different ChaMP fields. Traditional methods based on light curve analyses pose difficulties for two main reasons. First, for a given source in the absence of significant background, the signal-to-noise ratio (S/N) in each bin varies as the square root of the bin length. The threshold for detection of variability is, then, always dependent on the bin size adopted for the light curve. Second, the time resolution of variability is limited to the Nyquist sampling of the light curve and is equivalent to an interval of twice the adopted bin size. A general astrophysical X-ray source population that would be expected to contain AGNs, early- and late-type stars, X-ray binaries, and X-ray pulsars would exhibit timescales of variability ranging from a fraction of a second to days. There is clearly no obvious single binning scheme that could be optimized to encompass such a dynamic range in timescale. Alternative hierarchical binning methods that apply light curves multiple times in order to sample the full range of useful bin sizes are computationally expensive and are not very sensitive to the type of variability characterized by generally quiescent behavior upon which might sit small, infrequent bursts.

To cope with the general X-ray source case, we have developed a variability test based on the “Bayesian blocks” (BB) method of Scargle (1998). One advantageous property of X-ray detectors such as microchannel plates, proportional counters, and fast frame CCD cameras is that individual photon events are measured and timed (in the case of the latter, this is only true if the frame time is significantly smaller than the average time between events). Binning of time-tagged event data is unnecessary for examining time variability because event arrivals are described by the Poisson distribution. Deviations from the expected arrival times can then be exploited to investigate variability. The BB method is based on Bayesian statistics and seeks to determine the most probable segmentation of the observation into time intervals—“Bayesian blocks”—during which the photon arrival rate has no statistically significant variations. The analysis method itself does not impose a lower limit to the timescale on which variability can be detected: this is instead determined by the timing accuracy of the observing instrument. The BB method has the further advantage that the Bayesian blocks themselves describe the variability of any source in the most economical way using the minimum possible number of parameters, each

parameter being the start and stop times of the block and the event rate during the block. The method is thus well suited to having results for a large number of sources stored on a computer. Furthermore, for each source divided into  $n$  blocks, each block with a mean count rate  $C_i$  and Poisson uncertainty  $\sigma_i$ , we can also usefully characterize the variability with three parameters: the median block length, the total source “amplitude,”  $\Phi$ ,

$$\Phi = \sum_{i=1}^{n-1} |C_{i+1} - C_i|,$$

and the “significance” of variability,  $S$ ,

$$S = \frac{\sum_{i=1}^{n-1} |C_{i+1} - C_i|}{\sqrt{\sigma_1^2 + 2\sigma_2^2 + \dots + 2\sigma_{n-1}^2 + \sigma_n^2}}.$$

One complication to the BB method as implemented in ChaMP is that the ACIS CCD camera upon which our survey is based has a typical frame time of 3.2 s. Individual event time tags are therefore only accurate to  $\pm 1.6$  s. For faint sources where event arrivals are separated on average by intervals much larger than this, the frame time is irrelevant for source variability, except in the rare case of a repeating signal with a comparable or shorter period. However, for sources in which multiple events might arrive in the same frame, this poses a problem in that all events within the frame nominally arrive at exactly the same time. This artifact can give rise to spurious variability at the readout frequency as the BB algorithm perceives all the events as arriving at the end of a 3.2 s interval. In order to avoid this, for frames in which multiple events occur we artificially distribute the events evenly in time throughout the frame. An example of the output of the BB analysis is shown in Figure 8. Among the sources (3177 sources; see § 6) found in CCD ID = 0–3 in ACIS-I and CCD ID = 6–7 in ACIS-S observations, we have identified 92 variable sources. In the first ChaMP catalog (991 sources; see § 6), we have 53 variable sources (flag = 055 in Table 7).

One disadvantage of the BB method is that it is not easy to account for background subtraction. While generally low and often negligible, the background can vary quite strongly during an observation. Source variability is, however, easily separated from background variability by examining the BB analysis of an annular region surrounding each source region.

In order to diagnose the possible presence of significant periodic variability, we also compute power spectra for each source. While these power spectra are currently examined only by eye, in future implementations of our variability analysis we expect to undertake more thorough and automated searches for periodicity.

### 3.4. Absolute Position

The absolute positional accuracy of the *Chandra* observatory is about  $1''$ , when processed with the most recent calibration data.<sup>10</sup> In order to detect any unforeseen error, particularly in those data processed with old calibration data, and to provide improved celestial positional accuracy for ChaMP X-ray sources, we use optical observations and databases that are being compiled for the ChaMP (Green et al. 2003). For each ChaMP field, we obtain optical CCD images in the SDSS  $g'$ ,  $r'$ , and  $i'$  bands. Optical sources are extracted

<sup>10</sup> As specified in <http://cxc.harvard.edu/cal/ASPECT/celmon>.

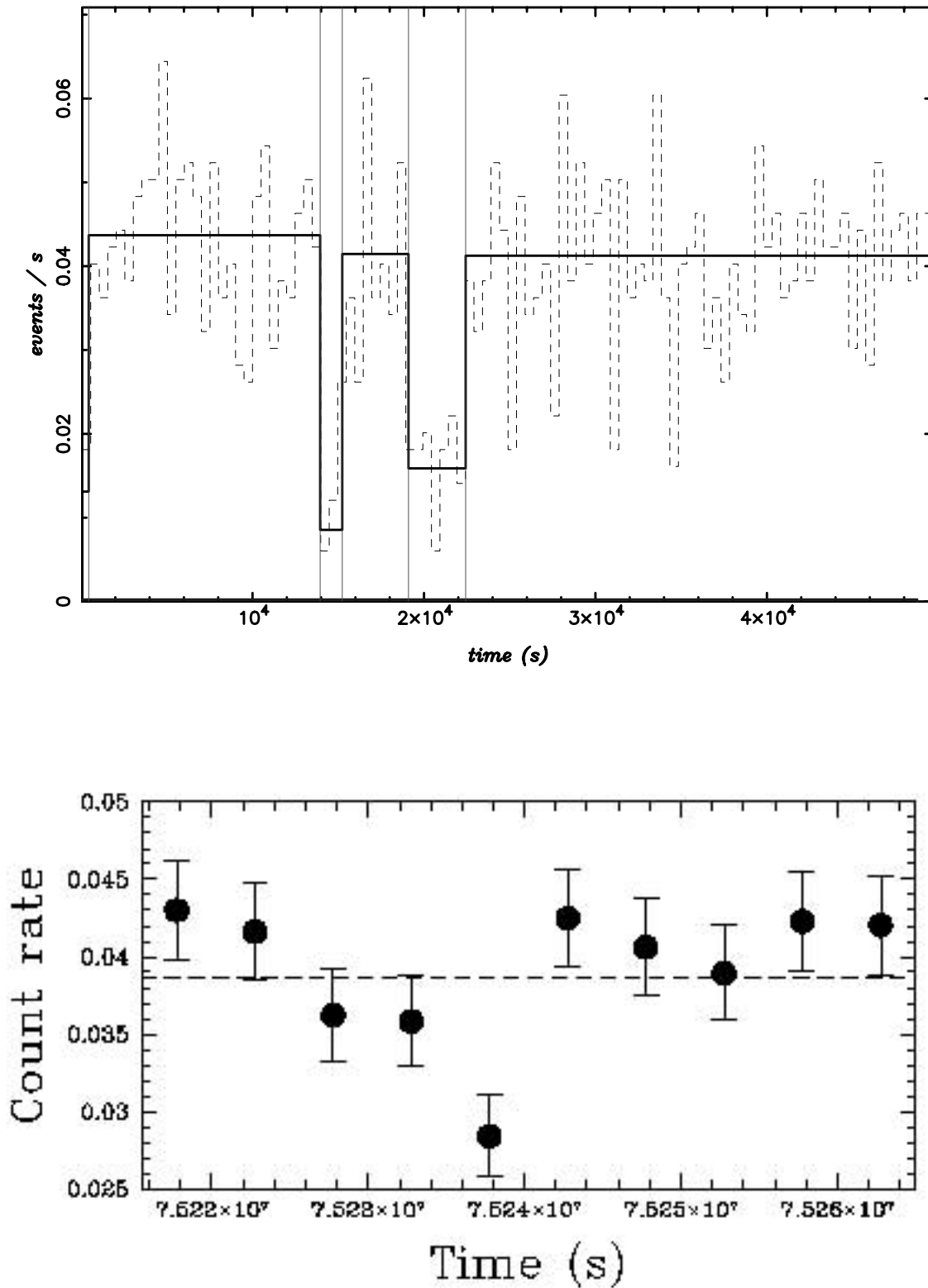


FIG. 8.—(a) Example of variability determined by the Bayesian blocks method. The *Chandra* data of 1WGA J1216.9+3347 is used here to illustrate the results of our variability analysis. The dotted histogram represents the light curve, and the thick black histogram indicates where the count rate remains constant or varies. The break in the count rate is also marked by the vertical line. [See the electronic edition of the *Journal* for a color version of this figure.] (b) Light curve of the same source determined by the traditional time binning method (taken from Cagnoni et al. 2003).

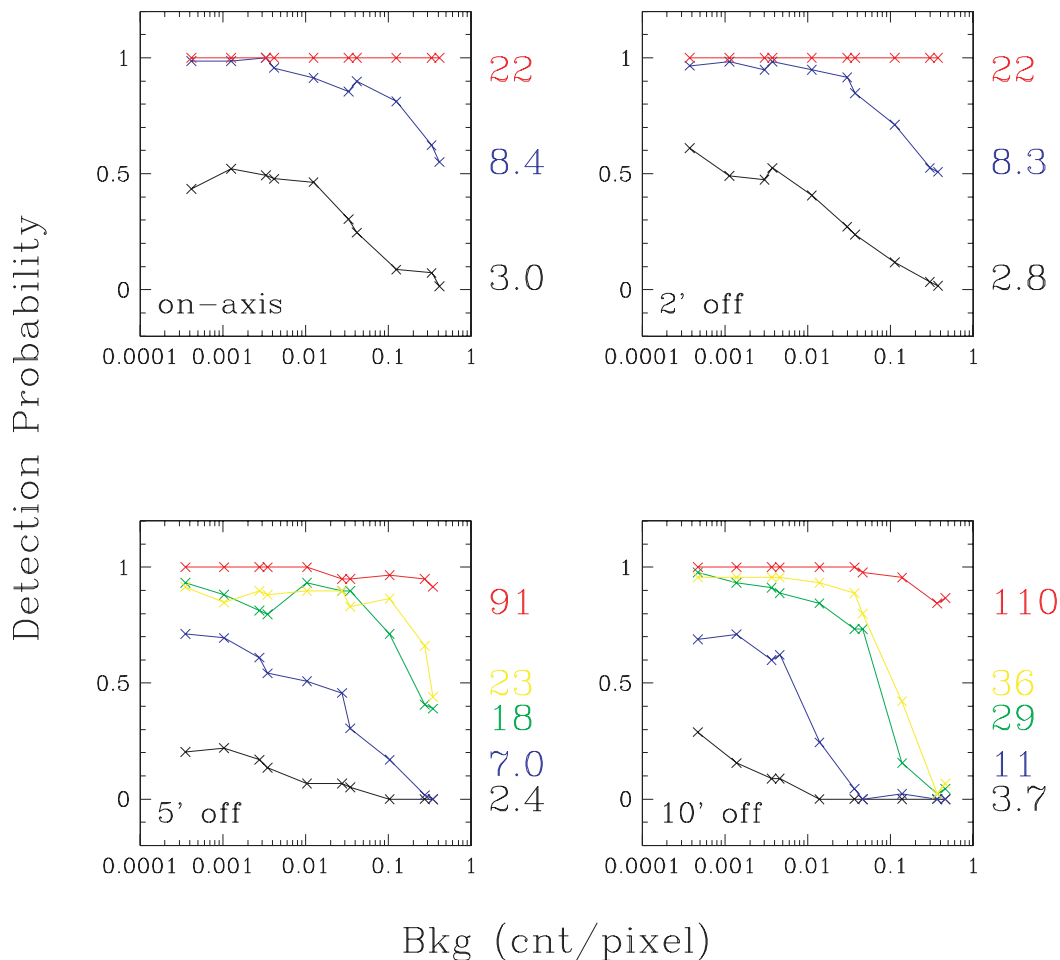


FIG. 9.—Detection probability as a function of background counts with various source counts (from a few to  $\sim 100$ , indicated at the right side of figures) and off-axis distances: (a) on-axis, (b) 2' off-axis, (c) 5' off-axis, and (d) 10' off-axis.

in these images using SExtractor (Bertin & Arnouts 1996) for each field, we astrometrically calibrate our optical coordinate system against the GSC 2.2 catalog (Bucciarelli et al. 2001), which is in turn astrometrically calibrated via the Astrographic Catalog/Tycho and the Tycho Catalog II to the ICRS reference frame. For each ChaMP field, the positions of X-ray sources are correlated to optical sources in the field to correct the X-ray coordinate system from standard *Chandra* aspect processing. The field correction is then applied to each X-ray source position. This typically corrects the X-ray positions by less than  $\sim 1''$ . As the positional accuracy of sources detected by *wavdetect* depends on how well the PSF is sampled, the error increases with decreasing source counts and increasing off-axis distances (see § 5). Therefore, we use only sources with counts of more than 20 and  $D_{\text{off-axis}} < 300''$  to fine-tune the astrometric solution for the *Chandra* image.

### 3.5. Verification and Validation (V&V)

All the data products have been reviewed and confirmed by more than one ChaMP scientist (1) to make sure that the data processing was done correctly and (2) to flag those sources with various special issues listed in Table 3. If there was a problem in processing, the data were reprocessed and reexamined. The source flags footnoted in Table 3 are initially flagged by automatic XPIPE processing, then confirmed by verification and validation (V&V), whereas those not

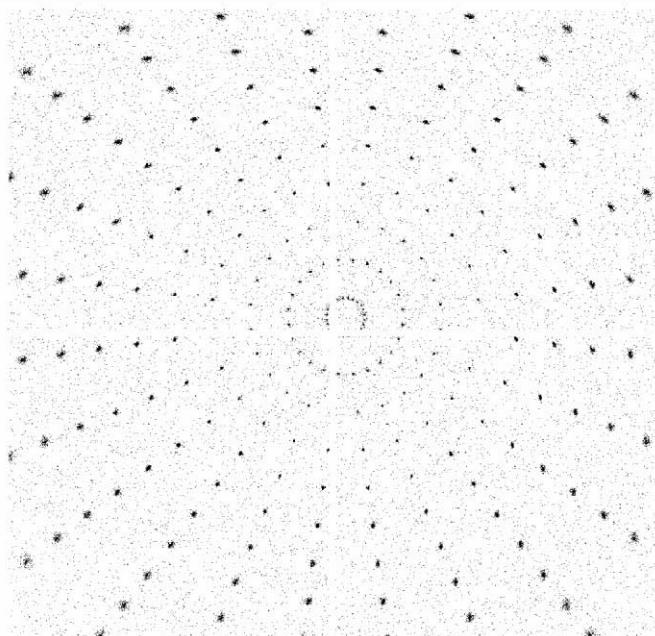


FIG. 10.—SAOSAC simulation of point sources at a wide range of off-axis angles in four ACIS-I chips. Each source has 1000 net input counts.

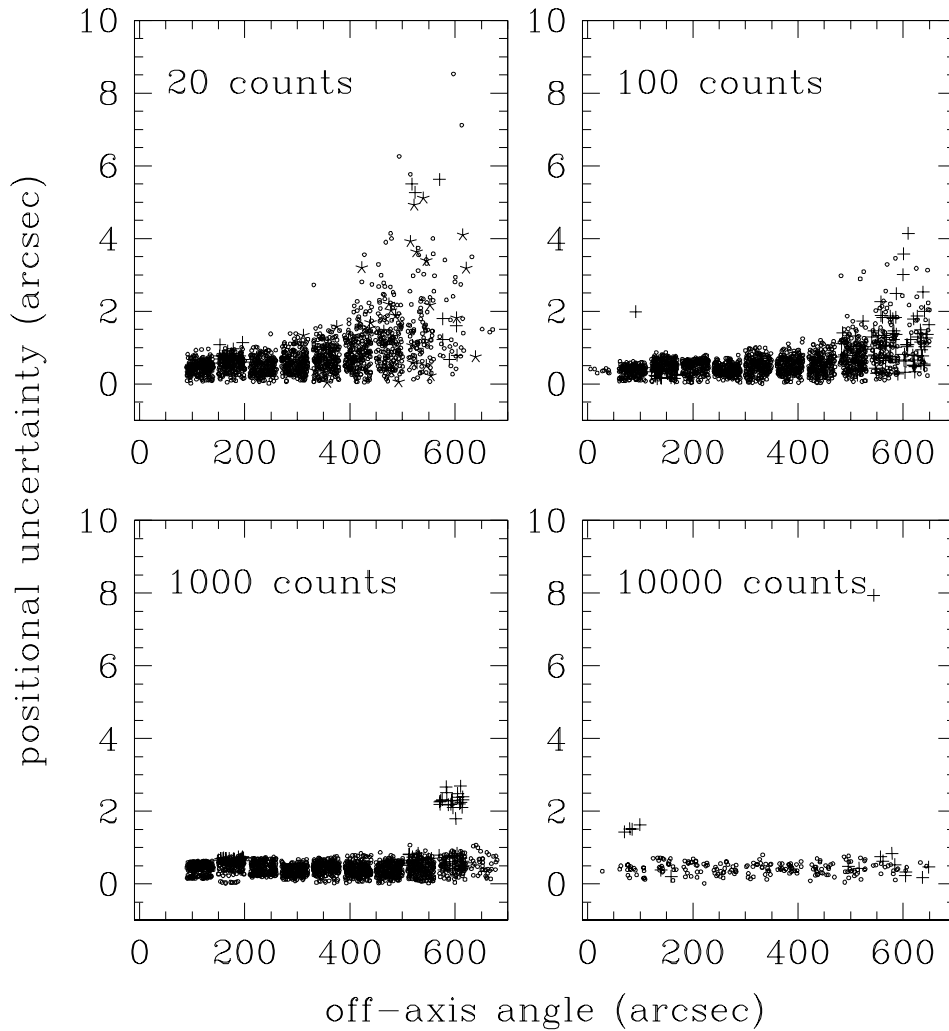


FIG. 11.—*wavdetect* position errors measured with SAOSAC simulations. About 2000 sources are simulated each for (a) 20, (b) 100, and (c) 1000 counts, and about 200 sources for (d) 10,000 counts. Differences between estimated and expected positions are plotted against off-axis angle. Sources falling at the detector edges are subject to a large error and are denoted by plus signs. For visibility, points are horizontally shifted by adding random numbers (up to 50'') to off-axis angles.

footnoted are determined only by visual examination. The flags in Table 3 are divided into four subgroups: false sources, questionable sources, valid sources but with uncertain properties and sources with special characteristics. Most of them are self-explanatory or references are given in the table.

Flag = 021 (spurious source) is rather subjective, but we have only one source in our initial sample. Flag = 037 (pile-up) is usually for X-ray bright target sources. For the remaining sources (i.e., without this flag), the pile-up is always less than a few percent near on-axis and lower at large off-axis

TABLE 4  
POSITIONAL ERRORS

METHOD	NUMBER OF SOURCES	MEAN ERROR	$\sigma$	POSITIONAL UNCERTAINTY		
				67%	95%	99%
Positional Error (in arcsec) at $D_{\text{off-axis}} = 6' - 8'$ for Count = 20						
<i>wavdetect</i> in CIAO 2.3 .....	403	1.28	0.74	1.53	2.75	3.36
Revised <i>wavdetect</i> .....	403	1.13	0.64	1.34	2.31	3.17
Positional Error (in arcsec) at $D_{\text{off-axis}} = 8' - 10'$ for Count = 20						
<i>wavdetect</i> in CIAO 2.3 .....	146	2.82	1.8	3.46	5.82	7.66
Revised <i>wavdetect</i> .....	146	1.85	1.2	2.11	4.23	4.92

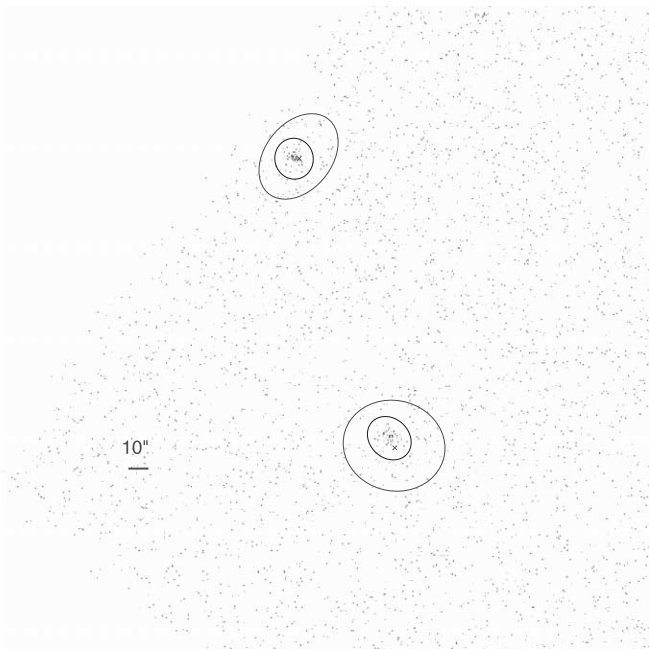


FIG. 12.—Examples of X-ray sources identified by *wavdetect* with relatively large position errors. The large ellipses are the source regions determined by *wavdetect* in CIAO 2.3. Note that the centers of two ellipses (*crosses*) are off by  $2''$ – $4''$  from the local peaks. The smaller ellipses indicate the revised source regions by the new algorithm described in § 5. [See the electronic edition of the *Journal* for a color version of this figure.]

distances. Flag = 054 is for already known X-ray jets (either by previous X-ray missions or by radio data). Searching for new faint X-ray jets or close multiple sources (lens candidates) are some of ChaMP science goals.

#### 4. DETECTION PROBABILITY

From a statistical perspective, *wavdetect* is a hypothesis test. At any given location, the null hypothesis is that there is no source is checked against the observed signal, and the null is rejected if the signal cannot be obtained at some threshold probability as a fluctuation due to the background. The usefulness of a statistical test depends both on its ability to correctly accept the null hypothesis (i.e., minimize the false positives, the number of spurious sources; this is the so-called type I error and is quantified by the threshold significance of detection) as well as correctly reject the null (i.e., minimize the false negatives, the number of real sources that are missed; this is the so-called type II error and is quantified by the probability of detecting a source).

To quantitatively determine the performance of *wavdetect* (V. Kashyap et al. 2003, in preparation), we have run a series of simulations using MARX (MARX Technical Manual 2002) and have also made use of *Chandra* data to confirm some of the results of the simulation. First, postage stamp ( $256 \times 256$ ) images are simulated at different off-axis locations ( $0'$ ,  $2'$ ,  $5'$ , and  $10'$ ) for a grid of source strengths (ranging from  $\sim 3$  to  $\sim 4000$  counts) and background intensities (ranging from  $\sim 1.5 \times 10^{-4}$  to  $\sim 0.2$  count pixel $^{-1}$ ), assuming a flat spectrum between 0.2 and 10 keV (the input spectrum is not important, because the only interesting parameter is the counts produced in the detector by the source and background). Such simulations were carried out  $\sim 50$  times at each grid point. Then, *wavdetect* was run on each image adopting a detection threshold of one expected false source per image, at scales 1,

2, and 4 pixels for the on-axis points and 2, 4, 8, and 16 pixels for the off-axis locations.

##### 4.1. Type I Errors

We find that the performance of *wavdetect* is as expected ( $\sim 1$  false source is found in each image) for on-axis sources and *improves* for off-axis sources. At  $10'$  off-axis, the number of false sources is on average less than 0.2 per simulation. The reason for the improvement is the additional logic discriminators installed in *wrecon*, the second part of *wavdetect*, which compare source sizes with the known PSF size and eliminate many false sources in that manner.

We have also performed a comparable study with a *Chandra* observation of relatively long exposure times ( $\sim 100$  ks). We have split the long observation into smaller pieces (10 ks each) and run *wavdetect* on the original long observation and smaller segments with the same parameters. It would be reasonable to assume that sources found in the segments as well as in the original observation are likely to be real, whereas sources found in the segments but not in the original observation are likely to be false. We can then measure how many spurious sources are found in the segments, but not found in the original, long observation. We have performed this exercise with ObsID = 536 and ObsID = 927. On average, we found 0.3 spurious sources per CCD, which is fully consistent with the simulation results.

##### 4.2. Type II Errors

Determining the rate of false negatives, or the probability of failing to detect a real source, is more complex because of its strong dependence on source strength, background intensity, and off-axis location. The detection probability decreases as the background rate increases, because it is easier to obtain fluctuations from the background that match the source intensities, thus reducing the significance of detection. Also, in general the PSF increases in size at larger off-axis angles, spreading the source counts over a larger area of the detector, thus including a larger number of background counts within the source region, which again serves to reduce the detection probability. Finally, as the nominal source strength is reduced, the Poisson fluctuations in the observed source counts ensure that in increasingly larger numbers, sources lie below the detection thresholds, again reducing the probability of detecting the source.

We determine the detection probability over the same range of parameters as above and show representative curves in Figure 9. It is clear that type II errors are critical at the faint end, i.e., near the detection limit of each observation. For instance, only half the sources with a strength of, say, 10 counts are detected at  $5'$  off-axis when the background is  $\sim 0.03$  count pixel $^{-1}$ .

#### 5. POSITIONAL UNCERTAINTY

With the superb *Chandra* spatial resolution, the on-axis positional accuracy is expected to be accurate with an error less than  $1''$ . However, with increasing off-axis angle, PSFs spread out and also become circularly asymmetric (see *Chandra* POG 2000). Consequently, a source position may not be reliable for a weak source at a large off-axis angle. In order to quantify this uncertainty, we have carried out another set of simulations with SAOSAC<sup>11</sup> because its ray-trace

<sup>11</sup> See <http://cxc.harvard.edu/chart>.

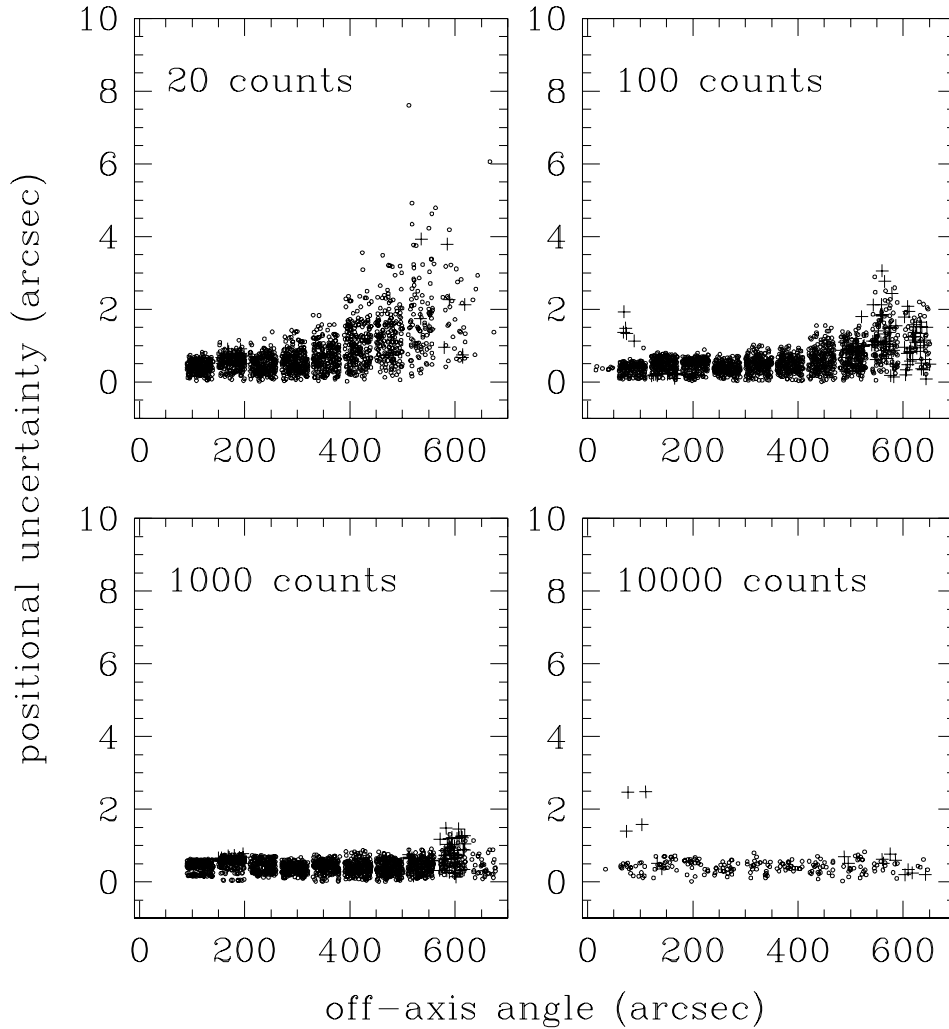


Fig. 13.—Same as Fig. 11 after the position correction with a new *wavdetect* algorithm

technique represents the actual HRMA more realistically than MARX. Figure 10 illustrates an example of simulated sources in four ACIS-I CCDs. We ran *wavdetect* on the simulated images and compared *wavdetect*-determined source positions with input positions. Figure 11 shows the positional error as a function of off-axis angle for a wide range of source strengths, from 20 to 10,000 counts. When a source lies at the edge of the CCD, source photons may be lost and the *wavdetect* centroiding algorithm may not work properly. Such sources (with average exposure within the source radius less than 80% of the on-axis exposure) are marked as a plus symbol in Figure 11. In the following discussion, we exclude those sources falling near the CCD edge. We note that these sources are flagged in the ChaMP database to indicate their large uncertainties both in flux and position. As expected, the source position is accurately determined for strong sources with 1000 counts and 10,000 counts (Figs. 11c and 11d). The positional uncertainty is  $\sim 0''.7$  (95% confidence), regardless of  $D_{\text{off-axis}}$ . For fainter sources (with 20 counts and 100 counts in Figs. 11a and 11b, respectively), the positional error remains relatively small (less than  $1''$ – $2''$ ) within  $D_{\text{off-axis}} < 6'$ . However, the positional error increases significantly at  $D_{\text{off-axis}} > 6'$ . The results are summarized in Table 4, where a mean value,  $1\sigma$  scatter from the mean, and positional uncertainties at 67%, 95%, and 99% confidence levels are listed.

By examining sources with large offsets between the simulated and detected position, we have recognized that source positions estimated by *wavdetect* (in CIAO 2.3 or earlier) or the algorithm given in Freeman et al. (2002) become less accurate by up to several arcseconds (see Fig. 11), if either the contribution of the background to the observed total counts in the source cell is non-negligible, or the source cell is highly asymmetric. To mitigate this problem, the algorithm has been enhanced (P. Freeman 2003, private communication). First, a position estimate is made using the original algorithm, along with an estimate of the error. Then, if the source cell size is at least 15 pixels, and if the first position estimate is at least  $3\sigma$  away from the nearest maximum in the source counts image, the position estimate is refined by the following method. Any asymmetry in the source cell shape, or asymmetry in the distribution of data around the true centroid, can lead to inaccuracies in the position determination, since outlier data will “pull” the estimated centroid away from its true position. (This effect is thus most noticeable far off-axis, for low counts, as demonstrated in Fig. 11.) Taking the (possibly asymmetric) source cell and the original position  $(x_0, y_0)$  as an input, we eliminate the systematic effect of an asymmetric source cell by creating a new, temporary source cell: the largest square box centered at  $(x_0, y_0)$  that fits within the original source cell (i.e., all pixels in the new cell must



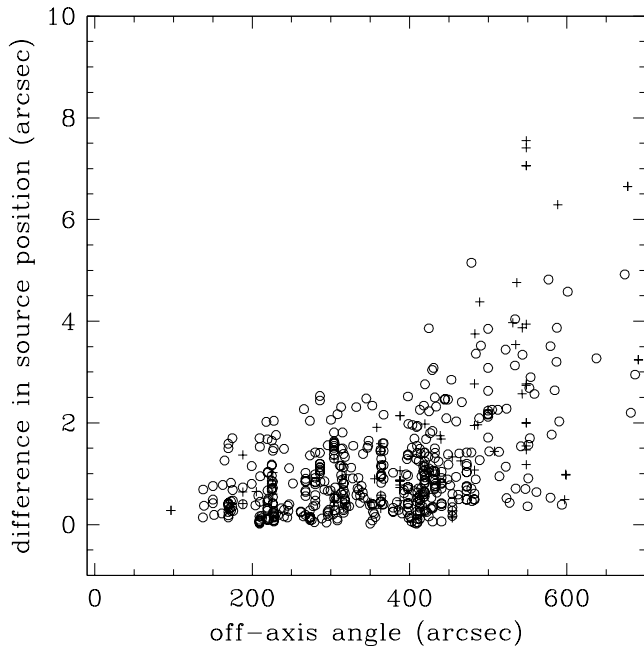


FIG. 14.—Position error measured in 10 observations of *Chandra* Deep Field–North. The position difference of the same source is plotted against off-axis angle for which we take the larger one in each pair. Sources that lie at the detector edges at least in one observation of the matching pair are denoted by plus signs.

also be within the old cell, but not vice versa). A new centroid determination is made within this cell. Refinement is done iteratively, i.e., the process of creating a cell and centroiding is repeated until the refined position estimate stabilizes. Figure 12 illustrates this problem and its correction. The larger ellipses indicate the source regions determined by a single run of *wavdetect*, while the smaller ellipses indicate the refined source regions, whose centroids are clearly closer to the actual photon distribution. In this example (ObsID = 520), the two sources with  $\sim 60$  counts each are located at  $D_{\text{off-axis}} \sim 8' - 9'$  and the corrections are  $4''.4$  (*lower one*) and  $2''.5$  (*upper one*).

The positional error after this refinement decreases considerably, in particular for a faint source at a large off-axis angle (see Fig. 13 and Table 4). In summary, the positional error is  $2''$  or better for a source (regardless of its strength) within  $D_{\text{off-axis}} < 6'$  from the aim point, while the error for a faint source increases to  $2'' - 3''$  and  $4'' - 5''$  at  $D_{\text{off-axis}} = 6' - 8'$  and  $8' - 10'$ , respectively (95% confidence). We have reexamined by eye those sources with large errors and confirmed that the error is basically driven by the statistical noise with a small number of source photons spreading out inside a large PSF. In XPIPE processing, we apply the improved position determination algorithm to all sources at  $D_{\text{off-axis}} > 400''$  and used the improved position and error in the following discussions (§ 6).

A set of empirical formulae (applicable up to  $D_{\text{off-axis}} < 10'$ ) are given here for a quick, approximate estimate of an error box:

$$\text{PE}(\text{arcsec}) = 1 - 0.02D_{\text{off-axis}}^2 + 0.0067D_{\text{off-axis}}^3$$

for sources with 20 counts, and

$$\text{PE}(\text{arcsec}) = 1 - 0.01D_{\text{off-axis}}^2 + 0.0025D_{\text{off-axis}}^3$$

for sources with 100 counts, where  $D_{\text{off-axis}}$  is in units of arcminutes. In the ChaMP source catalog, we provide the positional error for an individual source by interpolating these formulae and applying a conservative minimum of  $1''$  (see § 3.4 and footnote 10 for *Chandra* absolute astrometric accuracy).

Given that the PSF is asymmetric and the direction of PSF elongation is a function of azimuth, we have searched for any systematic trend, such as a preferential direction of offsets (i.e., both radial and tangential offsets) as a function of azimuth. However, we do not see any significant trend, as both the amount and direction of offsets appear to be random on a scale of less than  $1''$ . It is possible there still remains a systematic effect on a smaller scale ( $\sim$  few tenths arcsecond).

We have also performed a comparable study with *Chandra* data. Utilizing multiple observations pointing to the same part of the sky, we compare the multiple source positions of the same source measured in different observations. For this purpose, we have selected the *Chandra* Deep Field–North data, which consist of 12 separate observations from 1999 November to 2001 March. Excluding observations with a relatively short exposure time, we have used 10 observations with exposure times ranging from 50 to 170 ks. We ran *wavdetect* on each observation and cross-correlated source positions. To remove the systematic shift between different observations by an absolute position error, we first cross-correlate sources within  $300''$  from the aim point for which the positional accuracy is expected to be good as indicated by the above simulation study. We found a systematic shift of up to  $2''$  from one field to another. This is consistent with the known error in aspect calibration files of ACIS-I.<sup>12</sup> After registering each field to a common frame, we cross-correlated again all sources in 10 observations. The position difference of the same source detected in different observations is plotted against off-axis angle in Figure 14. In each matching pair, the larger off-axis angle was used here. The result is in full accordance with the simulation result. While most sources can be found within  $1'' - 2''$ , the positional error can be as large as  $5''$  at  $D_{\text{off-axis}} > 6'$ .

We note that the refined position does not affect source counts. The change using the revised position remains well within the error (§ 3), because the source extraction radius is

<sup>12</sup> See <http://cxc.harvard.edu/cal/ASPECT/>.

TABLE 5  
SELECTION CRITERIA FOR THE FIRST CHAMP CATALOG

Color	Number of Sources	Counts Limit	Off-Axis Distance Limit
S-band $\log N - \log S$ .....	707	20 in S band	400'' in ACIS-I or S3 in ACIS-S
H-band $\log N - \log S$ .....	236	20 in H band	400'' in ACIS-I or S3 in ACIS-S
X-ray colors.....	620	50 in B band	I0-I3 in ACIS-I or S2-S3 in ACIS-S

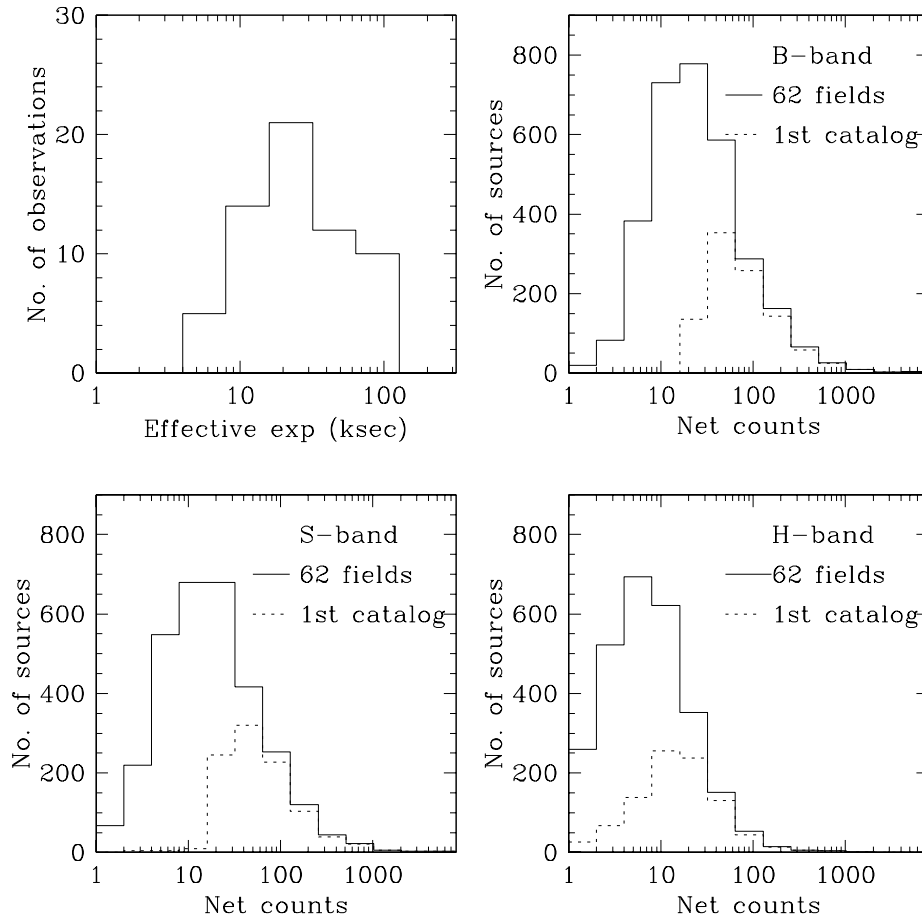


FIG. 15.—Distribution of exposure times and source counts in three energy bands. (a) Effective exposure time after correcting for the CCD dead time and background flares. (b–d) Net counts of 3177 sources obtained in 62 fields (solid histograms) and of 991 sources used in the first ChaMP catalog as described in Table 5 (dashed histogram).

much larger than the position change, when the correction is necessary, i.e., at the large  $D_{\text{off-axis}}$ .

## 6. ChaMP X-RAY SOURCE CATALOG

Sixty-two fields (listed in Table 1) have been completed in XPIPE processing and follow-up manual V&V. We have found 4517 sources, after excluding false sources (flag = 011–021 in Table 3). Further excluding the target of each observation (flag = 053), sources at the edge of CCDs (flag = 036) and sources affected by pile-up (flag = 037; in our 62 fields they all happened to be targets), we ended up with 4005 sources. There are 3177 sources within CCD ID = 0–3 in ACIS-I observations and CCD ID = 6–7 in ACIS-S observations. Among these sources, we have used 991 X-ray sources to extract the first ChaMP results on X-ray source properties in terms of  $\log N$ – $\log S$  and X-ray colors (see Paper II). They are all near on-axis and bright X-ray sources, which were selected (1) to avoid various systematic effects (e.g., detection probability, positional error) and (2) to maintain relatively high statistical significance (see Table 5). We present here the first ChaMP source catalog consisting of these 991 sources. Figures 15a–15d show the distributions of exposure times and net source counts in three energy bands for all sources in 62 fields and the 991 sources listed in the catalog.

To facilitate the use of the ChaMP catalog, we provide ECFs for various energy bands and various spectral models in Table 6. As described in § 3.3, ECFs are calculated for

different observation times (and per chip) and Galactic  $N_{\text{H}}$  for each field. In combination with Table 8 (containing photometric information), users can easily generate necessary fluxes. Because of limited space, we present the abbreviated version of the catalog in Tables 7 (source position and flag), 8 (source photometric information), and 9 (source spectral information). The full tables are available in the electronic version of this paper and also in the ChaMP Web site.<sup>13</sup> Descriptions of each column in Tables 7, 8, and 9 are listed below.

Columns of Table 7 are as follows:

Column (1).—ChaMP source id given by R.A. and decl. in J2000.

Column (2).—Observation ID.

Column (3).—CCD ID (0–3 for ACIS-I and 4–9 for ACIS-S).

Column (4).—Source ID number assigned by *wavdetect*.

Columns (5)–(6).—R.A. and decl. (J2000) after refinement in degree (note: col. [1] in hours, minutes, and seconds) (see § 5).

Column (7).—Positional error in arcseconds (see § 5).

Column (8).—Off-axis distance in arcminutes.

Column (9).—source extraction radius (95% EE radius; see § 3.3).

Column (10).—Effective exposure in ks (see § 3.1).

<sup>13</sup> See <http://hea-www.cfa.harvard.edu/CHAMP>.

TABLE 6  
ENERGY CONVERSION FACTORS

Obs. ID	CCD ID	$\gamma = 1.2$					$\gamma = 1.4$					$\gamma = 1.7$				
		B	S	H	$S_C$	$H_C$	B	S	H	$S_C$	$H_C$	B	S	H	$S_C$	$H_C$
325.....	6	116.45	38.88	297.53	44.69	240.97	104.69	39.35	290.50	45.04	229.90	91.56	39.99	281.82	45.70	214.83
325.....	7	86.98	26.92	277.71	32.84	219.52	75.15	26.38	270.16	32.50	208.41	61.56	25.40	260.76	32.04	193.39
326.....	6	123.36	43.12	283.04	49.21	233.16	112.55	44.04	276.97	49.91	223.31	100.72	45.44	269.63	51.16	209.91
326.....	7	98.72	31.82	277.54	37.77	221.05	87.14	31.73	269.70	37.73	209.76	73.95	31.46	259.86	37.75	194.49
342.....	6	117.20	40.09	282.38	45.86	232.29	106.07	40.69	276.30	46.32	222.43	93.68	41.55	268.92	47.17	209.00
342.....	7	90.94	28.55	276.82	34.57	220.12	79.19	28.16	268.97	34.34	208.83	65.72	27.41	259.11	34.06	193.54
346.....	6	122.51	41.72	298.22	47.81	241.89	110.98	42.47	291.19	48.37	230.84	98.30	43.59	282.58	49.38	215.79
346.....	7	94.58	30.01	278.56	35.77	220.52	82.87	29.75	271.01	35.60	209.41	69.45	29.19	261.63	35.39	194.39
363.....	6	122.54	42.70	283.05	48.74	233.10	111.67	43.58	276.97	49.41	223.25	99.76	44.91	269.63	50.60	209.83
363.....	7	97.70	31.38	277.48	37.33	220.96	86.08	31.25	269.64	37.27	209.66	72.84	30.90	259.80	37.24	194.39
377.....	6	124.55	43.72	283.21	49.88	233.33	113.80	44.70	277.15	50.63	223.48	102.11	46.23	269.80	51.97	210.07
377.....	7	100.25	32.48	277.54	38.43	221.12	88.72	32.47	269.71	38.45	209.84	75.61	32.30	259.88	38.54	194.58
419.....	7	91.55	28.76	278.33	34.57	220.23	79.77	28.38	270.78	34.32	209.11	66.25	27.63	261.38	34.00	194.09
431.....	6	126.09	44.50	283.47	50.77	233.64	115.41	45.56	277.40	51.58	223.79	103.85	47.21	270.05	53.02	210.39
431.....	7	102.09	33.28	277.94	39.26	221.53	90.60	33.34	270.10	39.32	210.24	77.58	33.29	260.26	39.49	194.96
507.....	6	123.47	43.17	283.06	49.28	233.20	112.65	44.09	277.00	49.98	223.36	100.81	45.49	269.67	51.23	209.96
507.....	7	98.82	31.85	277.70	37.81	221.18	87.23	31.77	269.87	37.78	209.89	74.03	31.49	260.02	37.79	194.61
512.....	6	121.36	42.11	282.98	48.09	233.00	110.42	42.92	276.90	48.70	223.14	98.39	44.13	269.54	49.81	209.72
512.....	7	96.13	30.71	277.37	36.66	220.78	84.47	30.52	269.52	36.56	209.49	71.17	30.07	259.68	36.47	194.21
520.....	0-3	132.11	47.47	286.17	54.15	237.38	121.48	48.73	280.14	55.13	227.60	110.10	50.71	272.90	56.87	214.28
521.....	0-3	130.99	45.45	305.37	52.48	245.79	119.46	46.52	297.92	53.30	234.12	106.98	48.17	288.73	54.74	218.19
525.....	0-3	143.41	52.87	295.68	60.63	243.73	133.05	54.71	288.97	62.09	233.17	122.46	57.72	280.78	64.66	218.84
536.....	0-3	123.02	41.57	305.11	48.10	245.02	111.10	42.22	297.62	48.61	233.31	97.92	43.18	288.38	49.53	217.31
541.....	0-3	124.25	42.20	304.45	48.78	244.57	112.44	42.93	297.00	49.34	232.89	99.43	44.02	287.77	50.36	216.95
546.....	0-3	129.42	45.49	293.43	51.98	241.03	118.32	46.56	286.70	52.81	230.47	106.32	48.24	278.47	54.30	216.09
548.....	0-3	128.64	45.10	293.29	51.55	240.89	117.50	46.13	286.56	52.35	230.32	105.42	47.73	278.34	53.77	215.95
551.....	0-3	132.00	46.81	293.76	53.49	241.46	121.03	48.02	287.03	54.43	230.89	109.28	49.93	278.82	56.10	216.53
578.....	6	111.98	37.68	280.60	43.43	232.32	100.71	38.04	274.92	43.79	222.93	88.00	38.52	268.11	44.46	210.18
578.....	7	82.10	25.16	271.33	31.10	214.78	70.58	24.56	264.02	30.75	204.00	57.37	23.51	254.94	30.27	189.46
615.....	6	138.07	50.85	285.20	58.22	235.84	128.03	52.56	279.18	59.57	226.03	117.67	55.32	271.91	61.93	212.67
615.....	7	116.21	39.75	279.96	46.31	223.96	105.20	40.45	272.14	46.83	212.67	93.06	41.45	262.33	47.74	197.39
624.....	6	116.81	39.06	297.37	44.88	240.88	105.08	39.54	290.34	45.25	229.83	91.98	40.21	281.71	45.93	214.78
624.....	7	87.43	27.10	277.62	33.00	219.46	75.62	26.58	270.07	32.68	208.35	62.04	25.62	260.66	32.23	193.35
789.....	6	129.27	46.13	284.01	52.65	234.29	118.74	47.35	277.95	53.59	224.44	107.46	49.27	270.63	55.25	211.05
789.....	7	105.85	34.95	278.46	41.02	222.16	94.46	35.16	270.63	41.19	210.87	81.63	35.37	260.80	41.53	195.60
796.....	0-3	133.90	47.68	295.42	54.40	243.25	122.99	48.99	288.67	55.42	232.68	111.37	51.07	280.43	57.23	218.33
805.....	6	117.02	40.01	282.21	45.78	232.16	105.89	40.60	276.14	46.23	222.31	93.50	41.46	268.79	47.07	208.90
805.....	7	90.74	28.47	276.76	34.49	220.07	78.98	28.07	268.91	34.27	208.78	65.52	27.31	259.07	33.97	193.50
809.....	6	116.67	39.86	281.89	45.60	231.99	105.55	40.44	275.85	46.05	222.18	93.16	41.29	268.54	46.88	208.81
809.....	7	90.35	28.32	276.68	34.34	219.96	78.59	27.91	268.83	34.11	208.67	65.12	27.13	258.97	33.81	193.39
830.....	6	122.06	42.47	282.89	48.49	232.98	111.17	43.32	276.83	49.14	223.13	99.21	44.60	269.48	50.29	209.72
830.....	7	97.07	31.11	277.45	37.06	220.90	85.44	30.95	269.60	36.98	209.61	72.17	30.57	259.76	36.93	194.33
838.....	6	123.68	43.28	283.07	49.38	233.17	112.89	44.22	277.00	50.10	223.32	101.12	45.67	269.65	51.38	209.91
838.....	7	99.20	32.03	277.53	37.97	221.05	87.64	31.97	269.70	37.95	209.76	74.48	31.73	259.86	38.00	194.49
839.....	6	117.99	39.61	297.46	45.48	241.01	106.30	40.15	290.44	45.88	229.97	93.30	40.91	281.80	46.63	214.93
839.....	7	88.83	27.67	277.57	33.52	219.47	77.05	27.20	270.02	33.22	208.36	63.51	26.33	260.62	32.82	193.36
841.....	6	122.77	42.82	283.02	48.89	233.13	111.90	43.70	276.96	49.56	223.28	100.00	45.03	269.63	50.76	209.88
841.....	7	97.94	31.47	277.64	37.44	221.10	86.31	31.35	269.80	37.38	209.80	73.07	31.02	259.96	37.35	194.52
861.....	6	122.35	42.62	282.94	48.64	233.01	111.48	43.48	276.86	49.30	223.17	99.56	44.79	269.52	50.48	209.75
861.....	7	97.58	31.32	277.61	37.27	221.03	85.95	31.18	269.75	37.20	209.73	72.71	30.83	259.90	37.17	194.43
868.....	0-3	129.14	45.24	294.82	51.60	242.45	117.99	46.31	288.05	52.43	231.86	105.94	47.97	279.78	53.91	217.49
869.....	6	123.35	43.10	283.15	49.20	233.24	112.52	44.02	277.07	49.89	223.39	100.68	45.42	269.73	51.14	209.97
869.....	7	98.68	31.80	277.56	37.75	221.06	87.09	31.71	269.73	37.72	209.77	73.90	31.43	259.88	37.73	194.50
898.....	6	124.18	43.53	283.17	49.68	233.32	113.40	44.48	277.12	50.41	223.47	101.63	45.96	269.77	51.71	210.07
898.....	7	99.72	32.24	277.69	38.21	221.22	88.15	32.20	269.85	38.20	209.94	75.00	31.98	260.02	38.25	194.66
902.....	6	126.18	44.55	283.35	50.83	233.56	115.52	45.62	277.29	51.65	223.73	103.97	47.28	269.97	53.09	210.33
902.....	7	102.24	33.35	277.91	39.33	221.51	90.76	33.41	270.09	39.39	210.22	77.75	33.38	260.24	39.57	194.94
907.....	0-3	129.14	45.26	294.64	51.65	242.36	117.98	46.31	287.88	52.47	231.79	105.91	47.95	279.64	53.93	217.43
913.....	0-3	128.30	44.83	294.66	51.13	242.27	117.11	45.84	287.89	51.93	231.68	104.98	47.43	279.62	53.34	217.31
914.....	0-3	131.07	46.22	295.06	52.73	242.78	120.01	47.38	288.29	53.63	232.19	108.12	49.20	280.04	55.23	217.84
915.....	0-3	134.48	47.98	295.49	54.76	243.35	123.59	49.32	288.73	55.80	232.78	112.03	51.45	280.50	57.65	218.43
918.....	0-3	133.61	47.53	295.41	54.23	243.23	122.68	48.82	288.65	55.24	232.66	111.02	50.87	280.40	57.02	218.30
926.....	0-3	135.66	48.59	295.78	55.47	243.67	124.82	49.98	289.03	56.56	233.10	113.35	52.21	280.80	58.49	218.75

TABLE 6—Continued

Obs. ID	CCD ID	$\gamma = 1.2$					$\gamma = 1.4$					$\gamma = 1.7$				
		<i>B</i>	<i>S</i>	<i>H</i>	<i>S<sub>C</sub></i>	<i>H<sub>C</sub></i>	<i>B</i>	<i>S</i>	<i>H</i>	<i>S<sub>C</sub></i>	<i>H<sub>C</sub></i>	<i>B</i>	<i>S</i>	<i>H</i>	<i>S<sub>C</sub></i>	<i>H<sub>C</sub></i>
927.....	0-3	128.37	44.87	294.60	51.19	242.27	117.17	45.88	287.84	51.99	231.69	105.03	47.46	279.60	53.40	217.34
928.....	6	120.17	40.63	297.64	46.61	241.33	108.56	41.27	290.63	47.08	230.30	95.69	42.19	282.01	47.95	215.27
928.....	7	91.70	28.82	278.26	34.63	220.17	79.93	28.45	270.71	34.38	209.06	66.42	27.71	261.32	34.07	194.04
930.....	6	117.98	40.47	282.37	46.27	232.32	106.90	41.12	276.30	46.77	222.46	94.60	42.06	268.92	47.67	209.04
930.....	7	91.97	28.98	276.86	34.97	220.17	80.24	28.63	269.01	34.77	208.88	66.81	27.94	259.15	34.53	193.61
1479.....	0-3	126.22	43.13	304.73	49.84	244.93	114.49	43.96	297.27	50.47	233.25	101.63	45.22	288.04	51.61	217.31
1588.....	6	119.70	41.32	282.40	47.18	232.41	108.73	42.06	276.33	47.75	222.55	96.62	43.17	268.96	48.77	209.14
1588.....	7	94.28	29.95	276.81	35.90	220.24	82.61	29.69	268.97	35.77	208.95	69.26	29.14	259.13	35.62	193.69
1596.....	6	121.51	42.21	282.66	48.17	232.72	110.63	43.04	276.59	48.81	222.87	98.67	44.31	269.24	49.95	209.46
1596.....	7	96.64	30.93	277.31	36.87	220.74	85.01	30.76	269.46	36.79	209.46	71.73	30.36	259.62	36.73	194.19
1629.....	6	123.96	43.43	282.99	49.54	233.13	113.19	44.38	276.93	50.28	223.29	101.45	45.86	269.60	51.58	209.89
1629.....	7	99.58	32.19	277.57	38.13	221.09	88.03	32.15	269.73	38.13	209.80	74.89	31.93	259.88	38.19	194.53
1630.....	6	124.53	43.72	283.05	49.87	233.22	113.79	44.70	276.99	50.63	223.38	102.10	46.23	269.65	51.97	209.98
1630.....	7	100.26	32.49	277.59	38.44	221.14	88.74	32.47	269.75	38.45	209.86	75.64	32.31	259.92	38.54	194.59
1642.....	6	121.34	42.12	282.65	48.08	232.70	110.45	42.95	276.58	48.71	222.85	98.47	44.20	269.22	49.84	209.44
1642.....	7	96.32	30.80	277.20	36.73	220.62	84.69	30.62	269.35	36.65	209.33	71.42	30.20	259.51	36.57	194.05
1643.....	6	124.09	43.50	282.99	49.62	233.15	113.33	44.46	276.93	50.36	223.31	101.60	45.94	269.60	51.67	209.91
1643.....	7	99.74	32.26	277.59	38.21	221.12	88.20	32.22	269.75	38.21	209.84	75.06	32.02	259.92	38.27	194.57
1644.....	6	121.88	42.39	282.73	48.37	232.80	111.01	43.24	276.67	49.02	222.95	99.09	44.54	269.33	50.19	209.54
1644.....	7	97.09	31.12	277.34	37.06	220.79	85.47	30.97	269.51	36.99	209.50	72.22	30.59	259.66	36.95	194.23
1708.....	0-3	128.35	44.85	294.66	51.18	242.32	117.15	45.87	287.89	51.97	231.73	105.00	47.44	279.64	53.38	217.36
1712.....	6	118.50	40.88	279.91	46.70	230.94	107.57	41.58	274.03	47.24	221.31	95.46	42.61	266.93	48.21	208.19
1712.....	7	92.05	29.15	272.98	35.07	217.12	80.50	28.84	265.26	34.90	205.98	67.27	28.23	255.56	34.70	190.91
2126.....	6	119.61	41.27	282.47	47.12	232.45	108.63	42.01	276.39	47.69	222.59	96.51	43.11	269.03	48.71	209.17
2126.....	7	94.13	29.89	276.79	35.84	220.21	82.46	29.62	268.95	35.70	208.93	69.11	29.07	259.11	35.55	193.67
2130.....	6	124.77	43.83	283.18	50.01	233.32	114.04	44.83	277.12	50.77	223.48	102.37	46.38	269.77	52.12	210.07
2130.....	7	100.55	32.61	277.69	38.56	221.23	89.03	32.61	269.85	38.58	209.94	75.94	32.46	260.00	38.69	194.67
2227.....	0-3	131.12	46.36	293.65	52.94	241.24	120.15	47.54	286.90	53.86	230.66	108.37	49.41	278.68	55.49	216.28
2228.....	0-3	129.55	45.56	293.27	52.03	240.85	118.50	46.67	286.54	52.89	230.27	106.59	48.40	278.31	54.42	215.90
2242.....	6	121.09	42.01	282.55	47.94	232.60	110.20	42.82	276.49	48.56	222.75	98.22	44.06	269.13	49.68	209.35
2242.....	7	96.04	30.68	277.06	36.62	220.49	84.41	30.50	269.22	36.53	209.20	71.13	30.06	259.37	36.45	193.93
2244.....	6	120.45	41.68	282.66	47.58	232.64	109.51	42.45	276.58	48.17	222.78	97.46	43.63	269.22	49.24	209.35
2244.....	7	95.25	30.35	277.05	36.29	220.47	83.59	30.12	269.22	36.18	209.18	70.27	29.63	259.37	36.07	193.91
2245.....	6	120.09	41.51	282.43	47.39	232.45	109.14	42.27	276.36	47.97	222.60	97.06	43.42	269.01	49.02	209.19
2245.....	7	94.75	30.14	276.88	36.09	220.31	83.10	29.91	269.05	35.97	209.03	69.77	29.39	259.21	35.84	193.76
2247.....	6	120.10	41.51	282.52	47.39	232.51	109.15	42.27	276.45	47.98	222.66	97.07	43.42	269.09	49.03	209.25
2247.....	7	94.74	30.14	276.90	36.08	220.32	83.08	29.90	269.06	35.96	209.03	69.75	29.38	259.23	35.83	193.77
2248.....	6	120.41	41.66	282.53	47.56	232.54	109.47	42.44	276.45	48.16	222.69	97.43	43.62	269.09	49.23	209.27
2248.....	7	95.16	30.31	277.00	36.25	220.41	83.51	30.09	269.16	36.14	209.13	70.19	29.59	259.31	36.03	193.85

NOTES.—ECFs ( $10^{-13}$  ergs  $s^{-1} \text{ cm}^{-2}$  per 1 count  $s^{-1}$ ) are calculated in the following energy bands: (*B*) counts in 0.3–8.0 keV and flux in 0.3–8.0 keV; (*S*) counts in 0.3–2.5 keV and flux in 0.5–2.0 keV; (*H*) counts in 2.5–8.0 keV and flux in 2.0–8.0 keV; (*S<sub>C</sub>*) counts in 0.5–2.0 keV and flux in 0.5–2.0 keV; (*H<sub>C</sub>*) counts in 2.0–8.0 keV and flux in 2.0–8.0 keV. Table 6 is also available in machine-readable form in the electronic edition of the *Astrophysical Journal Supplement*.

Column (11).—Source flag (see § 3.5).  
 Columns of Table 8 are as follows:  
 Column (1).—Same as column (1) in Table 7.  
 Columns (2)–(3).—Net counts in the *B* band (0.3–8.0 keV) and errors (see § 3.3).  
 Columns (4)–(5).—Net counts in the *S*<sub>1</sub> band (0.3–0.9 keV) and errors (see § 3.3).  
 Columns (6)–(7).—Net counts in the *S*<sub>2</sub> band (0.9–2.5 keV) and errors (see § 3.3).  
 Columns (8)–(9).—Net counts in the *H*-band (0.3–8.0 keV) and errors (see § 3.3).  
 Columns (10)–(11).—Net counts in the *S<sub>C</sub>* band (0.5–2.0 keV) and errors (see § 3.3).  
 Columns (12)–(13).—Net counts in the *H<sub>C</sub>* band (2.0–8.0 keV) and errors (see § 3.3).  
 Column (14).—Flux in the *B* band (0.3–8.0 keV) (see § 3.3 and Table 6).  
 Columns of Table 9 are as follows:

Column (1).—Same as column (1) in Table 7.  
 Columns (2)–(3).—Hardness ratios and errors (see § 3.3).  
 Columns (4)–(5).—C21 and errors (see § 3.3).  
 Columns (6)–(7).—C32 and errors (see § 3.3).  
 Note that in both colors, we assign 99 for an upper limit, –99 for a lower limit, and 999 for undetermined.

## 7. CONCLUSION

1. We present the first ChaMP X-ray source catalog of 991 sources after applying uniform data reduction techniques. The source properties include photometry (in various energy bands), spectroscopy (using hardness ratio and X-ray colors), spatial extendedness, and time variability.

Careful tests and simulations of the ChaMP XPIPE X-ray data processing described in this paper yield the following results:

2. The type I error (detecting a false source) is always less than 1 per CCD with the selected parameter, threshold =  $10^{-6}$ .

TABLE 7  
CHAMP X-RAY SOURCES

Source Name (1)	Obs. ID (2)	CCD ID (3)	Source Number (4)	R.A. (deg) (5)	Decl. (deg) (6)	Error (arcsec) (7)	$D_{\text{off-axis}}$ (arcmin) (8)	Radius (arcsec) (9)	Effective Exposure (ks) (10)	Flag (11)
CXOMP J001758.9+163119 .....	520	2	20	4.495466	16.522075	2.2	8.2	17.1	59.01	
CXOMP J001801.7+163426 .....	520	2	17	4.507208	16.573914	1.8	8.6	18.9	58.85	
CXOMP J001807.2+163551 .....	520	2	15	4.530175	16.597551	2.3	8.4	18.0	58.78	
CXOMP J001807.9+163120 .....	520	2	5	4.533049	16.522306	1.1	6.1	9.2	61.40	
CXOMP J001808.5+163231 .....	520	2	4	4.535688	16.542151	1.2	6.3	9.7	61.61	
CXOMP J001809.3+162532 .....	520	3	10	4.538769	16.425648	1.4	7.2	12.7	54.50	
CXOMP J001810.2+163223 .....	520	2	3	4.542675	16.539993	1.1	5.9	8.6	60.89	032
CXOMP J001810.2+162942 .....	520	2	10	4.542813	16.495064	1.4	5.4	7.4	63.29	
CXOMP J001817.6+163107 .....	520	2	2	4.573497	16.518677	1.0	3.8	4.2	65.27	
CXOMP J001818.0+163316 .....	520	2	8	4.575296	16.554504	1.1	4.7	5.9	62.39	
CXOMP J001821.7+161941 .....	520	3	9	4.590758	16.328226	2.9	10.7	28.8	51.51	
CXOMP J001825.0+163653 .....	520	0	23	4.604235	16.614733	1.6	7.1	12.0	58.69	
CXOMP J001827.0+162900 .....	520	3	4	4.612845	16.483385	1.0	1.7	3.0	60.45	
CXOMP J001828.5+162800 .....	520	3	3	4.618802	16.466688	1.0	2.3	3.0	60.15	
CXOMP J001828.6+163418 .....	520	0	8	4.619523	16.571732	1.0	4.3	5.2	58.49	
CXOMP J001831.4+162042 .....	520	3	5	4.630925	16.345135	1.7	9.4	22.2	53.28	
CXOMP J001833.4+163154 .....	520	0	3	4.639497	16.531778	1.0	1.8	3.0	64.21	
CXOMP J001836.8+163615 .....	520	0	16	4.653358	16.604240	1.6	6.3	9.7	60.07	032
CXOMP J001837.3+163447 .....	520	0	2	4.655755	16.579763	1.0	4.9	6.1	58.53	
CXOMP J001837.4+163046 .....	520	1	2	4.656161	16.512894	1.0	1.3	3.0	67.02	
CXOMP J001837.4+163757 .....	520	0	7	4.656184	16.632698	1.6	8.0	16.1	56.87	
CXOMP J001837.5+163610 .....	520	0	14	4.656549	16.603050	1.6	6.2	9.6	60.28	032

NOTE.—Table 7 is available in its entirety in the electronic edition of the *Astrophysical Journal Supplement*. A portion is shown here for guidance regarding its form and content.

TABLE 8  
X-RAY PHOTOMETRY

SOURCE NAME (1)	NET ( $B$ )		NET ( $S_I$ )		NET ( $S_2$ )		NET ( $H$ )		NET ( $S_C$ )		NET ( $H_C$ )		FLUX ( $B$ ) 0.3–8.0 (14)
	0.3–8.0 (2)	$\sigma$ (3)	0.3–0.9 (4)	$\sigma$ (5)	0.9–2.5 (6)	$\sigma$ (7)	2.5–8.0 (8)	$\sigma$ (9)	0.5–2.0 (10)	$\sigma$ (11)	2.0–8.0 (12)	$\sigma$ (13)	
CXOMP J001758.9+163119 .....	63.65	(11.39)	4.54	(4.76)	41.29	(8.30)	17.83	(7.47)	40.63	(8.38)	20.20	(7.86)	0.119 (0.021)
CXOMP J001801.7+163426 .....	93.68	(12.94)	4.22	(4.63)	46.82	(8.92)	42.65	(9.26)	43.76	(8.72)	49.15	(9.92)	0.176(0.024)
CXOMP J001807.2+163551 .....	53.85	(10.83)	1.73	(4.06)	27.45	(7.40)	24.68	(7.91)	29.55	(7.55)	26.10	(8.29)	0.101(0.020)
CXOMP J001807.9+163120 .....	102.93	(11.79)	7.21	(4.30)	61.78	(9.12)	33.94	(7.41)	55.48	(8.81)	47.22	(8.42)	0.185(0.021)
CXOMP J001808.5+163231 .....	85.67	(11.08)	11.88	(4.99)	45.21	(8.07)	28.58	(7.09)	51.07	(8.55)	32.54	(7.50)	0.154(0.020)
CXOMP J001809.3+162532 .....	86.41	(11.66)	12.52	(5.38)	53.05	(8.76)	20.84	(6.98)	60.76	(9.46)	24.43	(7.39)	0.175 (0.024)
CXOMP J001810.2+163223 .....	261.75	(17.98)	61.37	(8.93)	155.46	(13.88)	44.92	(8.81)	189.43	(15.07)	61.61	(10.06)	0.475 (0.033)
CXOMP J001810.2+162942 .....	23.85	(6.94)	7.24	(4.14)	13.72	(5.23)	2.90	(4.00)	20.42	(5.99)	3.77	(4.32)	0.042 (0.012)
CXOMP J001817.6+163107 .....	33.51	(7.07)	0.47	(2.33)	19.66	(5.56)	13.37	(4.98)	16.33	(5.22)	17.23	(5.45)	0.057 (0.012)
CXOMP J001818.0+163316 .....	43.38	(8.00)	5.16	(3.61)	29.16	(6.55)	9.06	(4.60)	30.92	(6.73)	12.70	(5.12)	0.077 (0.014)
CXOMP J001821.7+161941 .....	137.03	(17.23)	29.30	(8.26)	90.54	(12.31)	17.19	(10.18)	113.72	(13.55)	19.98	(10.74)	0.294 (0.037)
CXOMP J001825.0+163653 .....	61.19	(9.98)	5.43	(4.15)	40.20	(7.78)	15.56	(6.12)	42.51	(8.00)	19.39	(6.59)	0.115 (0.019)
CXOMP J001827.0+162900 .....	57.90	(8.80)	5.72	(3.60)	39.09	(7.39)	13.09	(4.85)	39.09	(7.39)	18.81	(5.56)	0.106 (0.016)
CXOMP J001828.5+162800 .....	144.04	(13.16)	23.55	(5.98)	84.79	(10.32)	35.69	(7.15)	100.44	(11.14)	42.59	(7.70)	0.265 (0.024)
CXOMP J001828.6+163418 .....	52.59	(8.55)	10.42	(4.43)	33.22	(6.90)	8.96	(4.44)	40.83	(7.54)	10.96	(4.72)	0.099 (0.016)
CXOMP J001831.4+162042 .....	213.44	(17.88)	25.25	(7.29)	148.56	(14.08)	39.63	(9.71)	159.13	(14.57)	54.50	(10.80)	0.443 (0.037)
CXOMP J001833.4+163154 .....	220.07	(15.93)	46.56	(7.91)	135.47	(12.70)	38.03	(7.31)	160.23	(13.72)	54.94	(8.54)	0.379 (0.027)
CXOMP J001836.8+163615 .....	36.14	(7.51)	1.03	(2.97)	23.69	(5.89)	11.43	(5.01)	21.14	(5.69)	15.59	(5.49)	0.067 (0.014)
CXOMP J001837.3+163447 .....	125.47	(12.49)	36.32	(7.15)	70.74	(9.53)	18.41	(5.79)	97.55	(10.99)	25.22	(6.47)	0.237 (0.024)
CXOMP J001837.4+163046 .....	36.03	(7.23)	7.70	(3.96)	22.41	(5.88)	5.92	(3.79)	24.36	(6.08)	11.67	(4.72)	0.059 (0.012)
CXOMP J001837.4+163757 .....	133.05	(14.07)	17.29	(6.01)	96.22	(11.36)	19.54	(7.31)	95.48	(11.41)	36.59	(8.74)	0.259 (0.027)
CXOMP J001837.5+163610 .....	43.72	(8.17)	0.00	(2.97)	30.91	(6.65)	12.94	(5.13)	28.70	(6.56)	15.79	(5.49)	0.080 (0.015)

NOTE.—Table 8 is available in its entirety in the electronic edition of the *Astrophysical Journal Supplement*. A portion is shown here for guidance regarding its form and content.

TABLE 9  
X-RAY COLORS

SOURCE NAME (1)	HR		C21		C32	
	(0.3–8.0) (2)	$\sigma$ (3)	(0.3–2.5) (4)	$\sigma$ (5)	(0.9–8.0) (6)	$\sigma$ (7)
CXOMP J001758.9+163119 .....	–0.44	(0.20)	–0.96	(4.22)	0.36	(0.09)
CXOMP J001801.7+163426 .....	–0.09	(0.14)	–1.05	(5.38)	0.04	(0.11)
CXOMP J001807.2+163551 .....	–0.08	(0.21)	–1.20	(16.36)	0.05	(0.16)
CXOMP J001807.9+163120 .....	–0.34	(0.13)	–0.93	(2.29)	0.26	(0.06)
CXOMP J001808.5+163231 .....	–0.33	(0.14)	–0.58	(0.75)	0.20	(0.08)
CXOMP J001809.3+162532 .....	–0.52	(0.16)	–0.63	(0.85)	0.41	(0.06)
CXOMP J001810.2+163223 .....	–0.61	(0.08)	–0.44	(0.20)	0.48	(0.03)
CXOMP J001810.2+162942 .....	–0.76	(0.38)	–0.28	(0.57)	0.68	(0.13)
CXOMP J001817.6+163107 .....	–0.20	(0.23)	–99.00	(0.00)	0.17	(0.14)
CXOMP J001818.0+163316 .....	–0.58	(0.22)	–0.75	(1.80)	0.51	(0.07)
CXOMP J001821.7+161941 .....	–0.75	(0.16)	–0.49	(0.42)	0.72	(0.05)
CXOMP J001825.0+163653 .....	–0.49	(0.19)	–0.87	(2.54)	0.41	(0.07)
CXOMP J001827.0+162900 .....	–0.55	(0.18)	–0.83	(1.95)	0.47	(0.06)
CXOMP J001828.5+162800 .....	–0.50	(0.11)	–0.56	(0.44)	0.38	(0.04)
CXOMP J001828.6+163418 .....	–0.66	(0.20)	–0.50	(0.66)	0.57	(0.06)
CXOMP J001831.4+162042 .....	–0.63	(0.10)	–0.77	(0.78)	0.57	(0.03)
CXOMP J001833.4+163154 .....	–0.65	(0.09)	–0.46	(0.25)	0.55	(0.03)
CXOMP J001836.8+163615 .....	–0.42	(0.31)	–99.00	(0.00)	0.39	(0.12)
CXOMP J001837.3+163447 .....	–0.71	(0.12)	–0.29	(0.20)	0.58	(0.04)
CXOMP J001837.4+163046 .....	–0.67	(0.25)	–0.46	(0.73)	0.58	(0.08)
CXOMP J001837.4+163757 .....	–0.71	(0.13)	–0.75	(0.89)	0.69	(0.04)
CXOMP J001837.5+163610 .....	–0.51	(0.26)	–99.00	(0.00)	0.49	(0.09)
CXOMP J001837.9+163910 .....	–0.48	(0.11)	–0.61	(0.55)	0.36	(0.05)
CXOMP J001838.1+163320 .....	–0.65	(0.21)	–0.68	(1.26)	0.59	(0.06)
CXOMP J001845.3+163528 .....	0.52	(0.32)	–0.67	(5.59)	–0.59	(1.34)
CXOMP J001845.7+163346 .....	–0.40	(0.07)	–0.86	(0.84)	0.31	(0.03)
CXOMP J001850.1+162756 .....	–0.63	(0.13)	–0.47	(0.38)	0.52	(0.04)
CXOMP J001853.5+162751 .....	–0.33	(0.09)	–1.10	(2.86)	0.26	(0.04)
CXOMP J001854.9+162952 .....	–0.68	(0.19)	–0.33	(0.35)	0.54	(0.07)
CXOMP J001859.8+162649 .....	–0.64	(0.07)	–0.67	(0.36)	0.57	(0.02)
CXOMP J001905.9+162842 .....	–0.23	(0.18)	–1.02	(5.53)	0.17	(0.11)
CXOMP J001909.2+163101 .....	–0.50	(0.22)	–0.41	(0.58)	0.33	(0.12)
CXOMP J005716.6–273230 .....	–0.51	(0.35)	–0.20	(0.30)	0.27	(0.43)
CXOMP J005717.9–271830 .....	–0.74	(0.17)	0.11	(0.20)	0.47	(0.34)
CXOMP J005724.5–273201 .....	–0.77	(0.12)	–0.04	(0.13)	0.61	(0.27)
CXOMP J005724.5–273201 .....	–0.65	(0.20)	–0.60	(0.27)	0.58	(0.30)
CXOMP J005729.2–273043 .....	–0.77	(0.28)	0.02	(0.24)	0.58	(0.62)
CXOMP J005730.8–273203 .....	–0.53	(0.14)	0.13	(0.16)	0.15	(0.20)
CXOMP J005730.8–273203 .....	–0.83	(0.19)	–0.29	(0.18)	0.85	(0.52)
CXOMP J005732.8–273006 .....	–0.56	(0.14)	–0.55	(0.19)	0.44	(0.19)
CXOMP J005745.0–272922 .....	–0.54	(0.15)	–0.46	(0.19)	0.39	(0.19)
CXOMP J005759.9–272126 .....	–0.97	(0.03)	0.32	(0.08)	1.31	(0.47)
CXOMP J005800.6–272741 .....	–0.77	(0.19)	0.04	(0.20)	0.57	(0.41)
CXOMP J005803.4–272135 .....	–0.72	(0.13)	0.07	(0.15)	0.46	(0.25)
CXOMP J005811.4–272635 .....	–0.89	(0.11)	0.26	(0.16)	0.79	(0.47)
CXOMP J005813.9–272549 .....	–0.65	(0.16)	0.03	(0.18)	0.35	(0.26)
CXOMP J005814.6–275002 .....	–1.00	(0.18)	–0.01	(0.22)	99.00	(0.00)

NOTE.—Table 9 is available in its entirety in the electronic edition of the *Astrophysical Journal Supplement*. A portion is shown here for guidance regarding its form and content.

3. The type II error (missing a real source) is a complicated function of source strength, background level, and off-axis distance. The error could be as large as 50% for a weak source (with  $\sim 10$  photons) at a moderate off-axis distance ( $D_{\text{off-axis}} \sim 5'$ ) with a typical background rate ( $\sim 0.03$  count pixel $^{-1}$ ) and should be carefully incorporated in any statistical analysis.

4. The positional accuracy is always good ( $< 1''$ ) for a bright source, regardless of its off-axis distance. However, for a faint source at a large off-axis distance, the position uncertainty can be as high as  $4''$ – $5''$  (95% confidence).

5. We have developed new tools to identify extended or variable sources. In particular, our new variability test, based on the Bayesian blocks algorithm, is applicable to common, faint sources.

This work has been supported by CXC archival research grant AR2-3009X. We acknowledge support through NASA contract NAS8-39073 (CXC). We thank the CXC DS and SDS teams for their supports in pipeline processing and data analysis.

## REFERENCES

- Bertin, E., & Arnouts, S. 1996, BAAS, 117, 393B  
 Brandt, W. N., et al. 2001, AJ, 122, 2810  
 Bucciarelli, B., et al. 2001, A&A, 368, 335  
 Cagnoni, I., Elvis, M., Kim, D.-W., Nicastro, F., & Celotti, A. 2002, ApJ, 579, 148  
 Cagnoni, I., Turolla, R., Treves, A., Huang, J.-S., Kim, D.-W., Elvis, M., & Celotti, A. 2003, ApJ, 582, 654  
 Comastri, A., Setti, G., Zamorani, G., & Hasinger, G. 1995, A&A, 296, 1  
 Cowie, L. L., Barger, A. J., Bautz, M. W., Brandt, W. N., & Garmire, G. P. 2003, ApJ, 584, L57  
 Chandra X-Ray Center. 2000, *Chandra Proposer's Observatory Guide (POG) version 3.0* (Cambridge: CXC)  
 Chandra X-Ray Center. 2002, *MARX 4.0 Technical Manual (MARX) rev. 3.0* (Cambridge: CXC)  
 Di Stefano, R., & Kong, A. 2003, ApJ, 592, 884  
 Fabian, A. C., & Barcons, X. 1992, ARA&A, 30, 429  
 Freeman, P. E., Kashyap, V., Rosner, R., & Lamb, D. Q. 2002, ApJS, 138, 185  
 Gehrels, N., et al. 1986, ApJ, 303, 336  
 Giacconi, R., et al. 2001, ApJ, 551, 624  
 Gilli, R., Rosati, G., & Salvati, M. 1999, A&A, 347, 424  
 Grant, C. E., Bautz, M. W., & Virani, S. N. 2002, ASP Conf. Ser. 262, *The High Energy Universe at Sharp Focus: Chandra Science*, ed. E. M. Schlegel & S. D. Vrtilek (San Francisco: ASP), 401  
 Green, P. J., et al. 2002, Astron. Nachr., 324, 93  
 ———. 2003, ApJS, 150, 43  
 Hasinger, G., Burg, R., Giacconi, R., Schmidt, M., Trumper, J., & Zamorani, G. 1998, A&A, 329, 482  
 Hasinger, G., et al. 1993, A&A, 275, 1  
 Kim, D.-W., & Elvis, M. 1999, ApJ, 516, 9  
 Kim, D.-W., Fabbiano, G., & Trinchieri, G. 1992, ApJ, 393, 134  
 Kim, D.-W., et al. 2003, ApJ, 600, 59 (Paper II)  
 Marshall, F. E., et al. 1980, ApJ, 235, 4  
 Miyaji, T., Hasinger, G., & Schmidt, M. 2000, A&A, 353, 25  
 Moretti, A., Campana, S., Lazzati, D., & Tagliaferri, G. 2003, ApJ, 588, 696  
 Rosati, P., Borgani, S., & Norman, C. 2002a, ARA&A, 40, 539  
 Rosati, P., et al. 2002b, ApJ, 556, 667  
 Scargle, J. D. 1998, ApJ, 504, 405  
 Stark, A. A., et al. 1992, ApJS, 79, 77  
 Struder, L., et al. 2001, A&A, 365, 18  
 van Speybroeck, L., et al. 1997, Proc. SPIE, 3113, 89  
 Weisskopf, M. C., Tananbaum, H., Van Speybroeck, L. P., & O'Dell, S. L. 2000, Proc. SPIE, 4012, 2  
 White, R. L., et al. 2003, preprint (astro-ph/0304028)  
 Wilkes, B. J., et al. 2002, ApJ, 564, L65